

# **Palm Beach County Projectile Point Database**

This is a visual database of “arrowheads” that have been found in Palm Beach County.

What most people call arrowheads are either spearheads or knives. Most “points” are just too large and heavy to shoot from a bow.

Arrowheads can only be made from specific types of rock. These rocks are crypto-crystalline (small crystal) in nature. Put simply, these rocks break in a predictable manner allowing a person to shape the rock as they desire (this is why points look different).

An interesting fact is none of this type of rock occurs naturally in Palm Beach County. Thus all the rock had to be traded into the area from either northern or western portions of the state.

Since this material was so rare, points were curated for long periods of time and if an old point was found on the ground it would be reused. That is why it is common to find very old (Archaic Period) points on more recent sites in Palm Beach County.

The rarity of these finds is why this database created, so others can learn about the types of “arrowheads” that have been found here in Palm Beach County.

CM



**Location Found:** Lake Okeechobee (north end)

**Type(s):** Stemmed point extensively resharpened.

**Date Range:** unknown

**Material Type:** Agatized Coral

**Material location:** unknown

**Size:** 2 inches by 1 inch

**Collection Location:** Historical Society of Palm Beach County



**Location Found:** Lake Okeechobee  
(south end)

**Type(s):** Hernando (damaged)

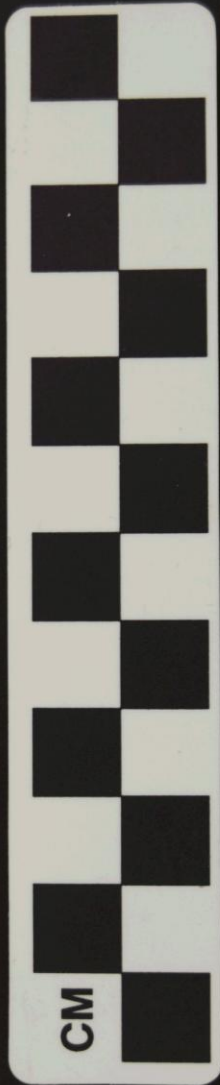
**Date Range:** 3000-1750AD

**Material Type:** Sandy Chert

**Material location:** Unknown

**Size:** 2 inches by 1 inch

**Collection Location:** State  
Collection



**Location Found:** Lake Okeechobee (south end)

**Type(s):** Expanded Side Notched Bolen

**Date Range:** 8000-6000

Found on a more recent site.

**(3000-1750AD)**

**Material Type:** Agatized Coral

**Material location:** Tampa area

**Size:** 4 inches by 1 inch

**Collection Location:** Old Courthouse, Historical Society of Palm Beach County



**Location Found:** Lake  
Okeechobee (south end)

**Type(s):** Kirk

**Date Range:** 8000-3000years

**Material Type:** Unknown

**Material location:** Unknown

**Size:** 4 inches by 1 inch

**Collection Location:**

Lawrence E. Will Museum,  
Belle Glade



**Location Found:** Tequesta

**Type(s):** Hamilton

**Date Range:** 5000-1000  
B.C.

**Material Type:** Agatized  
Coral

**Material location:** West  
Coast of Florida

**Size:** 3 inches by 1 inch

**Collection Location:**

Private Collection



**Location Found:** Jupiter

**Type(s):** Ocala (?) Bolen (?)

**Date Range:**

Ocala: Late Archaic

Bolen 8000-6000

**Material Type:** Unknown

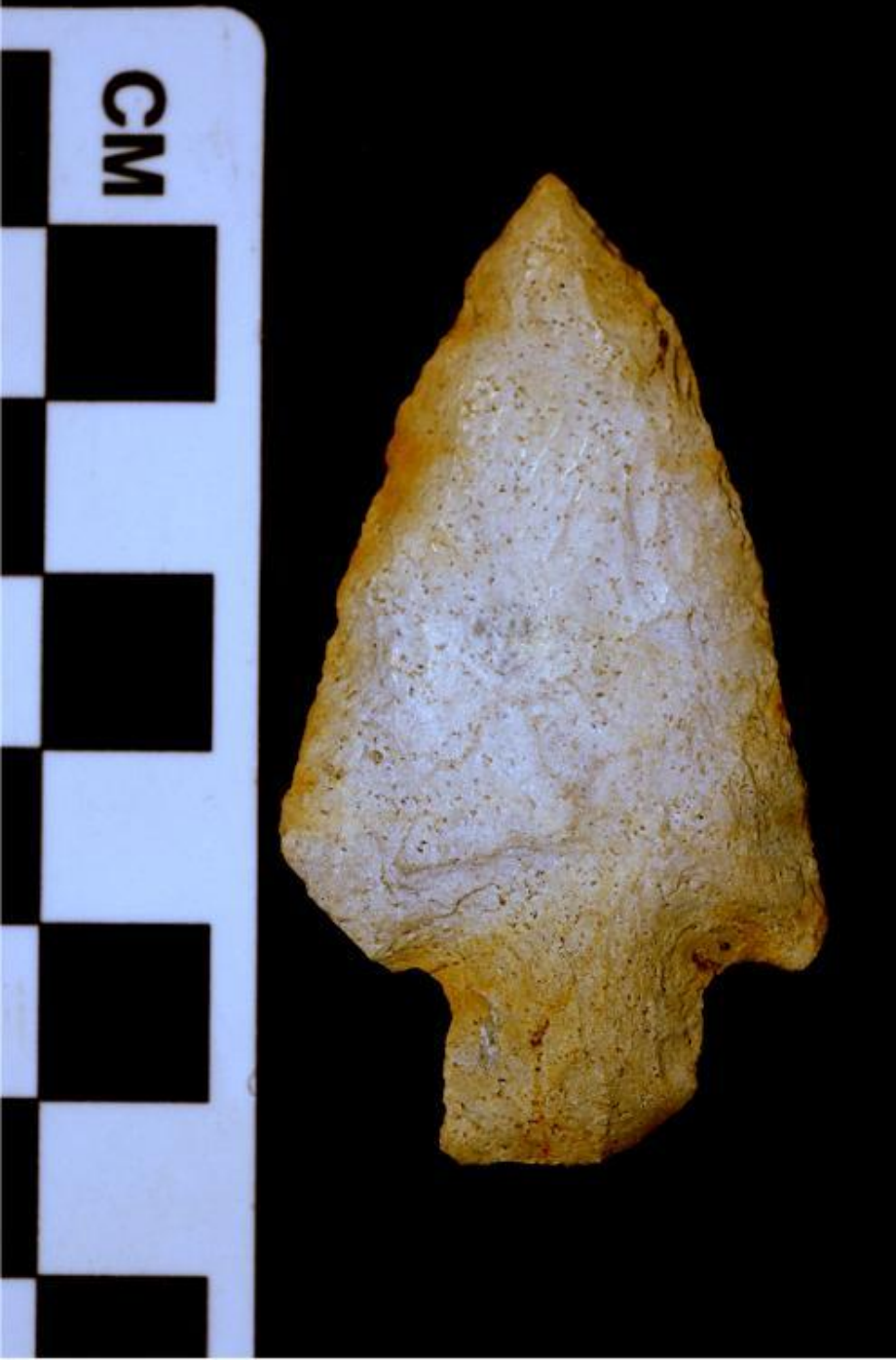
**Material location:** Unknown

**Size:** 1.5inches by 1 inch

**Collection Location:**

Private Collection





**Location Found:** Juno

**Type(s):** Either a

Savannah River, (Late Archaic)  
or Alachua point, (Middle-Late  
Archaic).

**Date Range:** Archaic (8,000 –  
3,000 years)

**Material Type:** Suwannee chert,

**Material location:** Pasco and  
Polk counties

**Size:** 2 1/2 inches by 1 inch

**Collection Location:** Private  
Collection donated to the  
Historical Society of Palm Beach  
County



**Location Found:** Lake Park

**Type(s):** Ocala (?) Side Notch  
Bolen (?)

**Date Range:**

Ocala: Late Archaic

Side Notch Bolen 8000-6000

**Material Type:** Unknown

**Material location:** Unknown

**Size:** 6.5 inches by 2.75 inches

**Collection Location:**

Private Collection



**Location Found:** Canal Point

**Type(s):** Kirk Serrated

**Date Range:** 9000-6000BP

**Material Type:** Unknown

**Material location:** Unknown

**Size:** 3 inches by 1.5 inches

**Collection Location:**

Private Collection

If you found an “arrowhead” in Palm Beach County and you would like to add it to the database send a digital photo of it next to a ruler and a location of where it was found (Juno, Jupiter, West Palm Beach ect).

You can email the photo to:

[cdavenpo@pbcgov.org](mailto:cdavenpo@pbcgov.org)

or

[cdavenpo@co.palm-beach.fl.us](mailto:cdavenpo@co.palm-beach.fl.us)

**I don't want your arrowheads (unless you don't want them). I just want a photo and a location.**

**Any questions should be sent to**

**Christian Davenport  
Palm Beach County Archaeologist**

**[cdavenpo@pbcgov.org](mailto:cdavenpo@pbcgov.org)**