



Palm Beach County: Strategic Planning and Performance Management



SUBSTANCE USE AND BEHAVIOR DISORDERS CROSS-DEPARTMENTAL TEAM **A Beacon Of Hope For Our Residents**

November 22, 2022



STRATEGIC PRIORITY: SUBSTANCE USE AND BEHAVIOR DISORDERS

Working together to support individuals and families in Palm Beach County living with substance use and mental health disorders.

John Hulick & Jill Singer
Community Services



Lauren Young-Work, LCSW
Fire Rescue

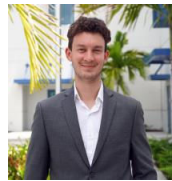
Twila D. Taylor, Psy.D.
Youth Services



Paul Petrino
Medical Examiner

Kathy Bolander & Jackie Lambert
Parks & Recreation

Joanna Reid-Enoise, Ed.D.
Criminal Justice Commission



Lynlee Lebensart & Mindy Rose
Library System

Jannifer Diaz
Victim Services

Keith Clinkscale
Strategic Planning and Performance
Management



Evan Henderson, Yash Nagel & Brooke Peters
Palm Tran

Marcela Millett, LMHC
Strategic Planning and Performance
Management

Substance Use and Behavior Disorders Cross-Departmental Team

Our Why

Priority: *“Addressing substance use and behavior disorders by providing evidence-based prevention, medication-assisted treatment, and recovery support services.”*

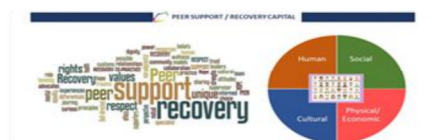
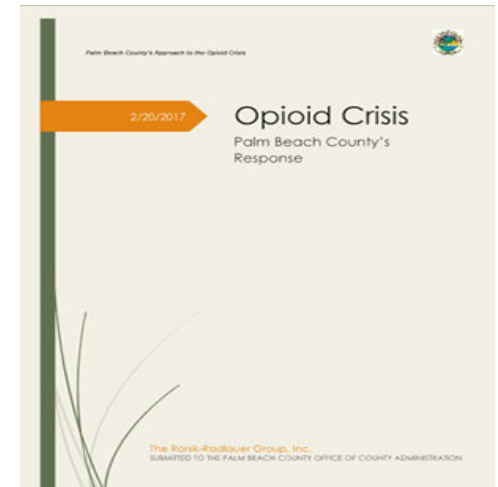
- **Goal 1:** Establishing a readily accessible, integrated and coordinated recovery-oriented system of care that meets the needs of Palm Beach County residents
- **Goal 2:** Promoting best practices and innovative strategies and programming to reduce:
 - *Alcohol and drug-related deaths and overdoses*
 - *Crime related to substance use and mental health*
 - *Drug-related infectious diseases and medical complications*
 - *Alcohol, Drug (inclusive of prescriptions) misuse*
 - *Suicide*
 - *Mental health emergencies*
- **Goal 3:** Promoting effective substance use and mental health prevention/education programs, sound public policy and commitment to quality, evidence-based addiction and mental health services.



Palm Beach County Departments, in partnership with local, state, and federal agencies and programs, navigates these waters every day, in every way, to ensure the most robust system of care is available to our residents and those we serve. Our why is **lighting the way** for those who are living with mental health, substance, and alcohol use disorders.

Major Milestones (2017 – 2022)

- 2017 - BCC adopts Opioid Response Plan
- 2018 - “Drug Czar”/Sr. Program Manager appointed
- 2019 - Health Care District opens Addiction Stabilization Unit
- 2019 - BCC sets Substance Use and Mental Health Disorders as Strategic Priority
- 2019 - Cross-Departmental Team established
- 2019 - Goal to establish readily accessible, person-centered, recovery-oriented system of care set
- 2019 - System of care model designed and developed
- 2019 - Recovery Capital Indexing deployed
- 2020 - BCC enacts syringe access program ordinance
- 2021 - Syringe Access Program launched
- 2022 - Substance Use and Mental Disorders Plan Update
- 2022 - PBSO Narcan Policy



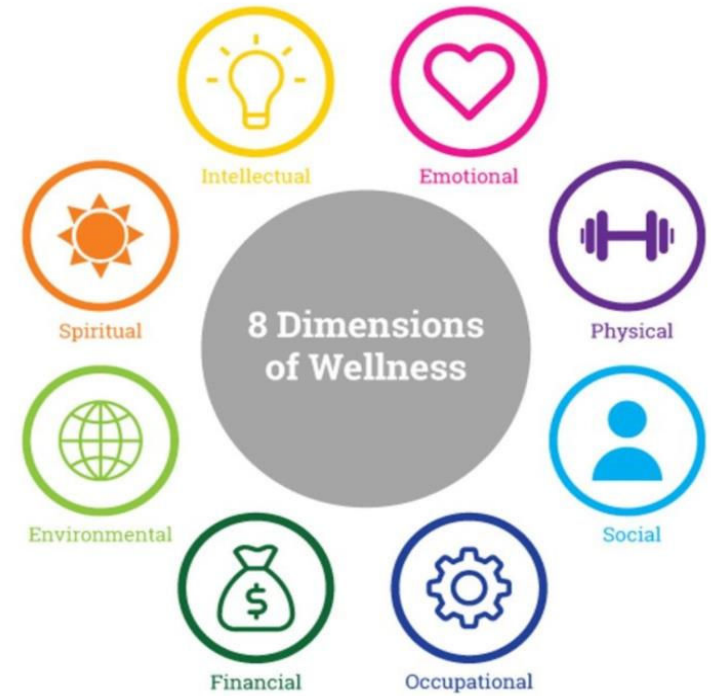
Our System of Care



This represents our system of care here in Palm Beach County.

Graphic created by Parks and Recreation

Developed by Dr. Peggy Swarbrick



Community Services Department: Office of Behavioral Health and Substance Use Disorders

Social Domain

Recovery Community Organizations (RCO)
Recovery Community Centers (RCC)
Supportive Housing
Wayside House Partial Hospitalization Program

Emotional Domain

Counseling Services through Financially Assisted Agencies including:
South County Mental Health (psychiatric & medical services; Crisis Stabilization, Mobile Crisis)
Southeast Florida Behavioral Health Network
RCO/RCCs
National Alliance on Mental Illness
Palm Beach County Behavioral Health Coalition

Participants

Environmental Factors

Recovery Supportive Housing
RCO/RCCs (Safe Spaces)
Florida Association of Recovery Residences Certified Recovery Homes

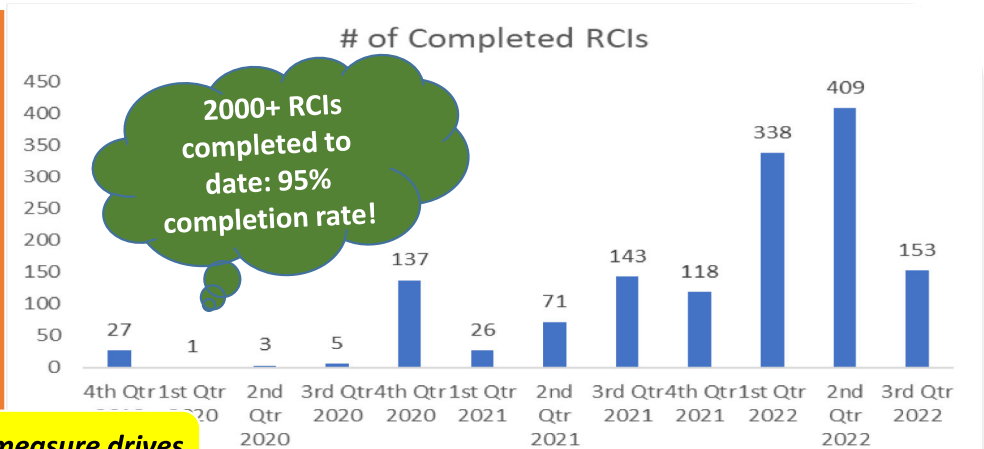


Supporting Recovery & Saving Lives – One Person at a Time

Community Services Department: Office of Behavioral Health and Substance Use Disorders

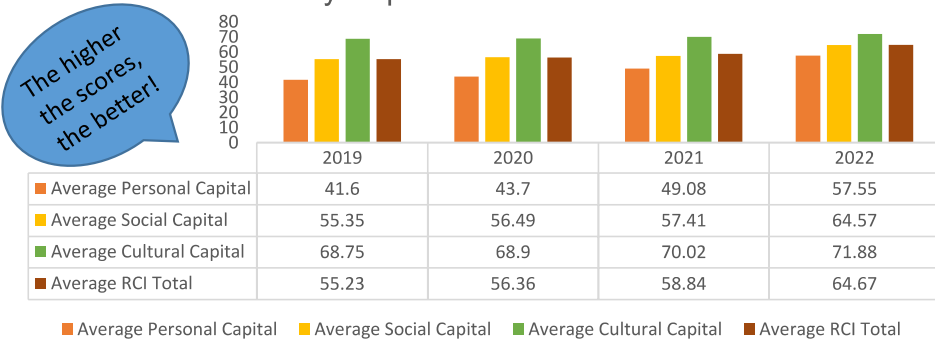
“The need for a more meaningful solution, one that established a pulse of someone’s recovery journey, no matter where they were in the continuum of care, led them to the **Recovery Capital Index® (RCI).**”

~David Whitesock, Commonly Well

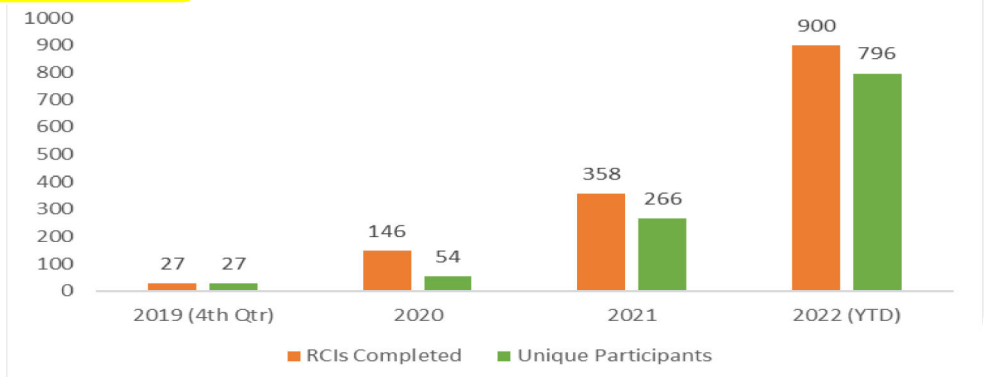


What we measure drives what we can change!

Palm Beach County Average Personal, Social, Cultural and Recovery Capital Index Total Scores



RCIs and Unique (New) Participants



Supporting Recovery & Saving Lives – One Person at a Time

Palm Beach County Medical Examiner Office: Comfort During a Crisis

Physical Dimension

Provide statistical data for awareness
Contribute to research
Support family wishes for donations



Emotional Dimension

Supportive listening to those grieving
Assist families in their grief journey
Promote healthy grieving



**Supporting Families
& Our Community**

Environmental Dimension

Safeguard removal of remains
Preserve remains until final disposition
Collaborate with FL Department of Health and
Centers for Disease Control

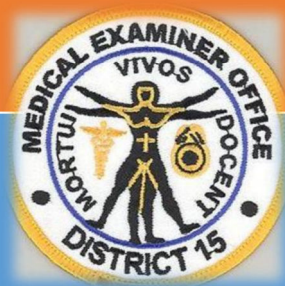
Social Dimension

Respond to public records requests
Provide social updates for public consumption
Complete releases to media inquiries

Finding Answers After a Loss

Palm Beach County Medical Examiner Office: Data Analysis

In 2021 our Office reviewed 14,277 cases and assumed jurisdiction in 2,495 of those for investigations



PBC MEO is National Association of Medical Examiners accredited and Pathologists are Board Certified

Forensic Matters

Our partnerships extend beyond FL Department of Health (DOH) and the Opioid Data To Action (OD2A) Grant – i.e., PBC Drowning Coalition, Trauma Hospital Review Teams, Medical Schools, Paramedic Training, Consumer Protection, Donation Services and Sudden Infant Death investigations



FL DOH grant recipient tracking overdoses
Coverdell Federal Grant recipient

Finding Answers After a Loss

Outcomes: Data Tells a Story

How Palm Beach County Compares...



Numbers reflect incidents per 100,000 population

Type of Death	National Ratio	State Ratio	Palm Beach County Ratio
Year	2020	2020	2020
Drug (ALL) Overdose	28.3	35.0	45.5*
Suicide	13.5	13.1	11.6

2020 data is most recent confirmed and available data set to use - Data is from several sources to include CDC, State, and local resources.

*Florida continues to welcome people from various other states for recovery treatment, especially in Palm Beach County, thus increasing population of those who potentially die of a drug overdose. Palm Beach County has approximately 50% of the total recovery beds in the state of Florida.

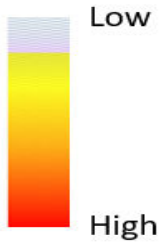
Numbers reflect incidents per calendar year, with 2022 figures being from January 1, 2022 to September 30, 2022

Type of Death	CY 2017	CY 2018	CY 2019	CY 2020	CY 2021	CY 2022 (9/30/22)	% Change vs 2021 (YTD)
Drug Related Deaths	817	498	520	675	657	424	- 8%
Opioid Related Deaths	626	402	448	605	529	267	-30%
Suicide	245	254	241	172	243	178	-3%

Although Palm Beach County has a higher overdose death rate compared to state and national figures, we have seen a decrease in drug related, specifically opioid related, deaths in the last 5 years.

Drug Overdose Deaths January 2022–September 2022

Location of All Drug Overdose Deaths

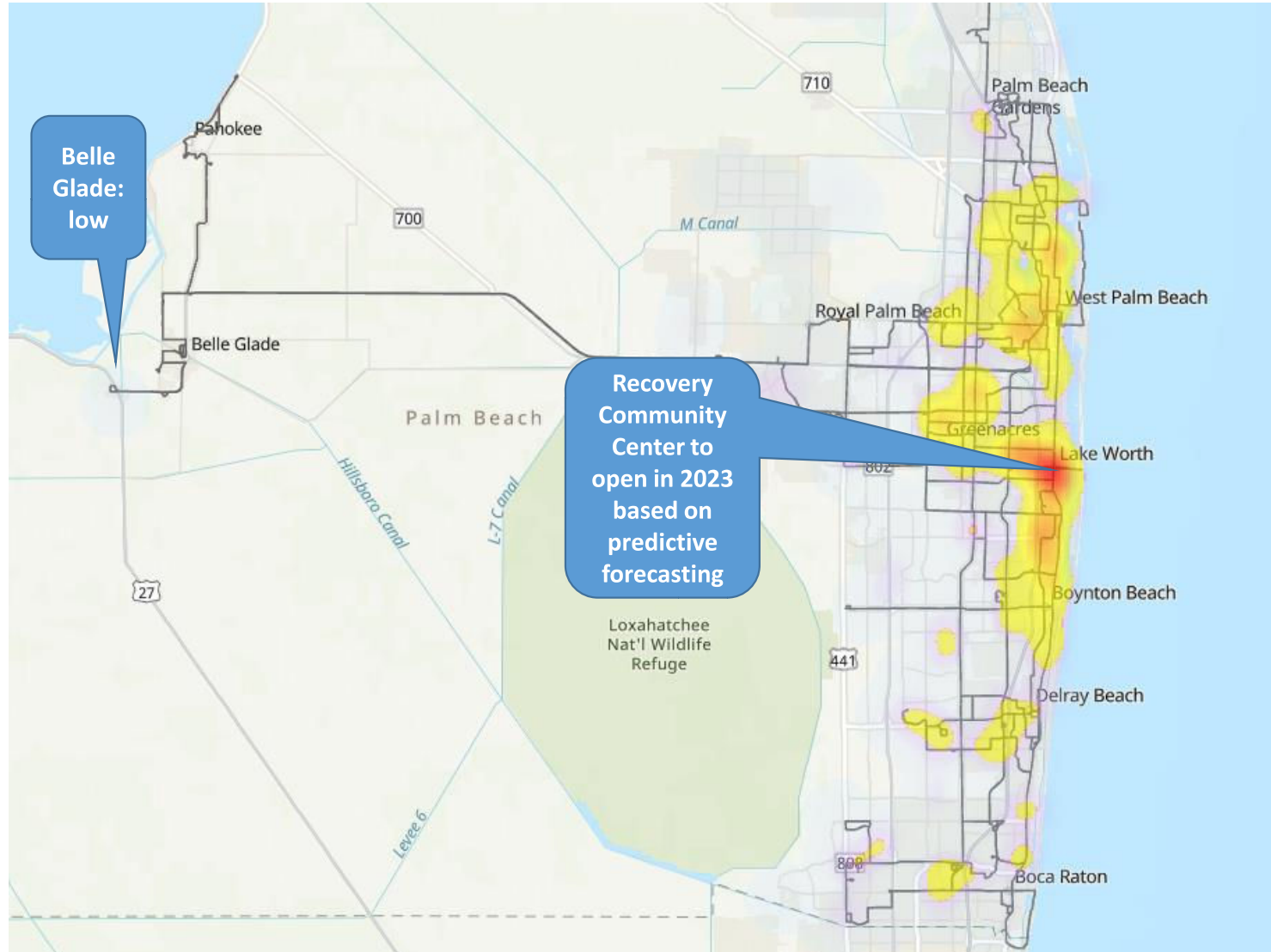


Total number = 423

Locations with Highest Incidents:

- Lake Worth
- Greenacres

Data are FY22 Calendar
YTD obtained by Medical
Examiner's office

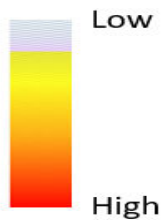


Finding Answers After a Loss

Suicide Cases

January 2022–September 2022

Location of Suicide Cases

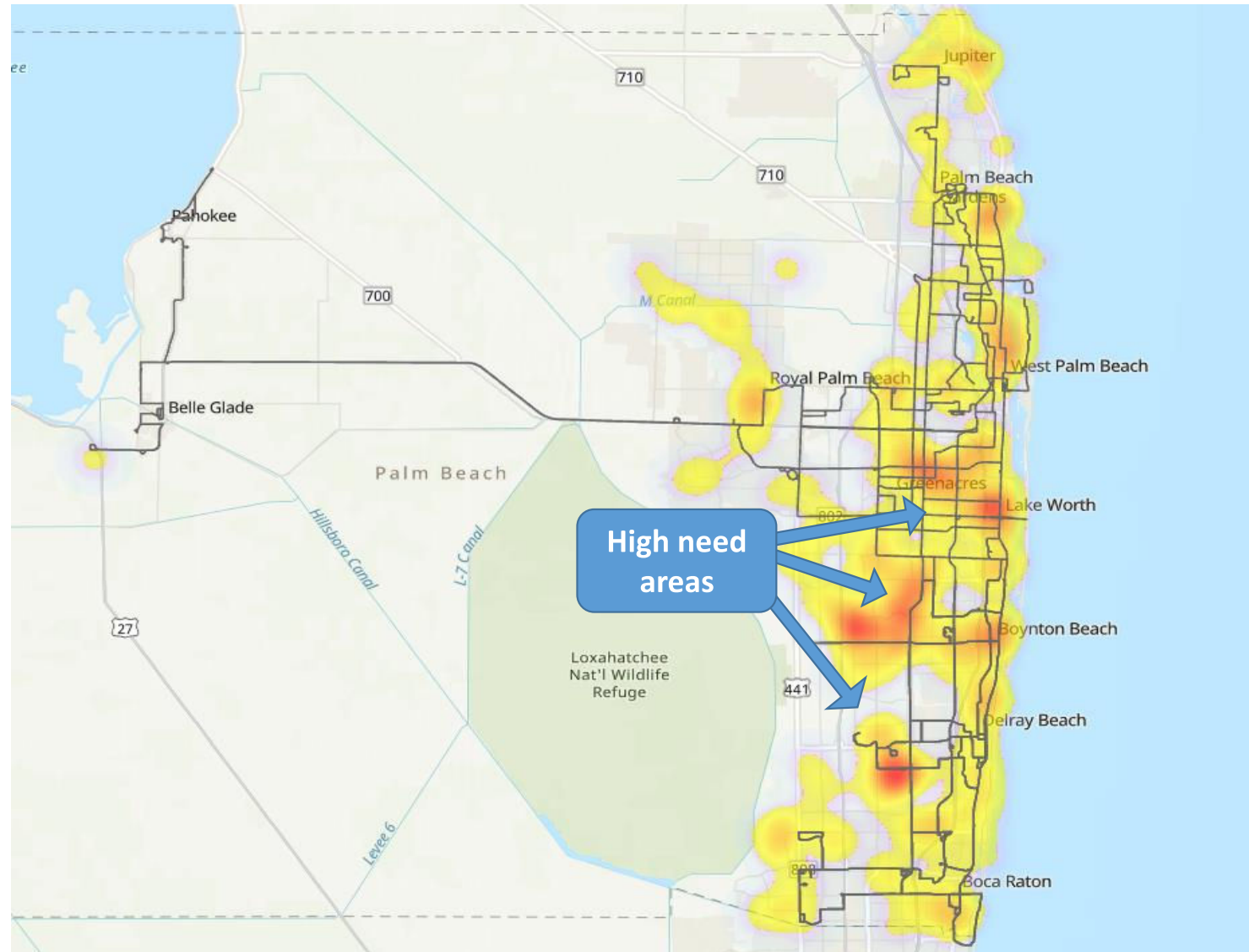


Total number = 178

Locations with Highest Incidents:

- Greenacres/Lake Worth
- Boynton Beach area
- Delray Beach area

Data are FY22 Calendar YTD obtained by Medical Examiner's office



Finding Answers After a Loss

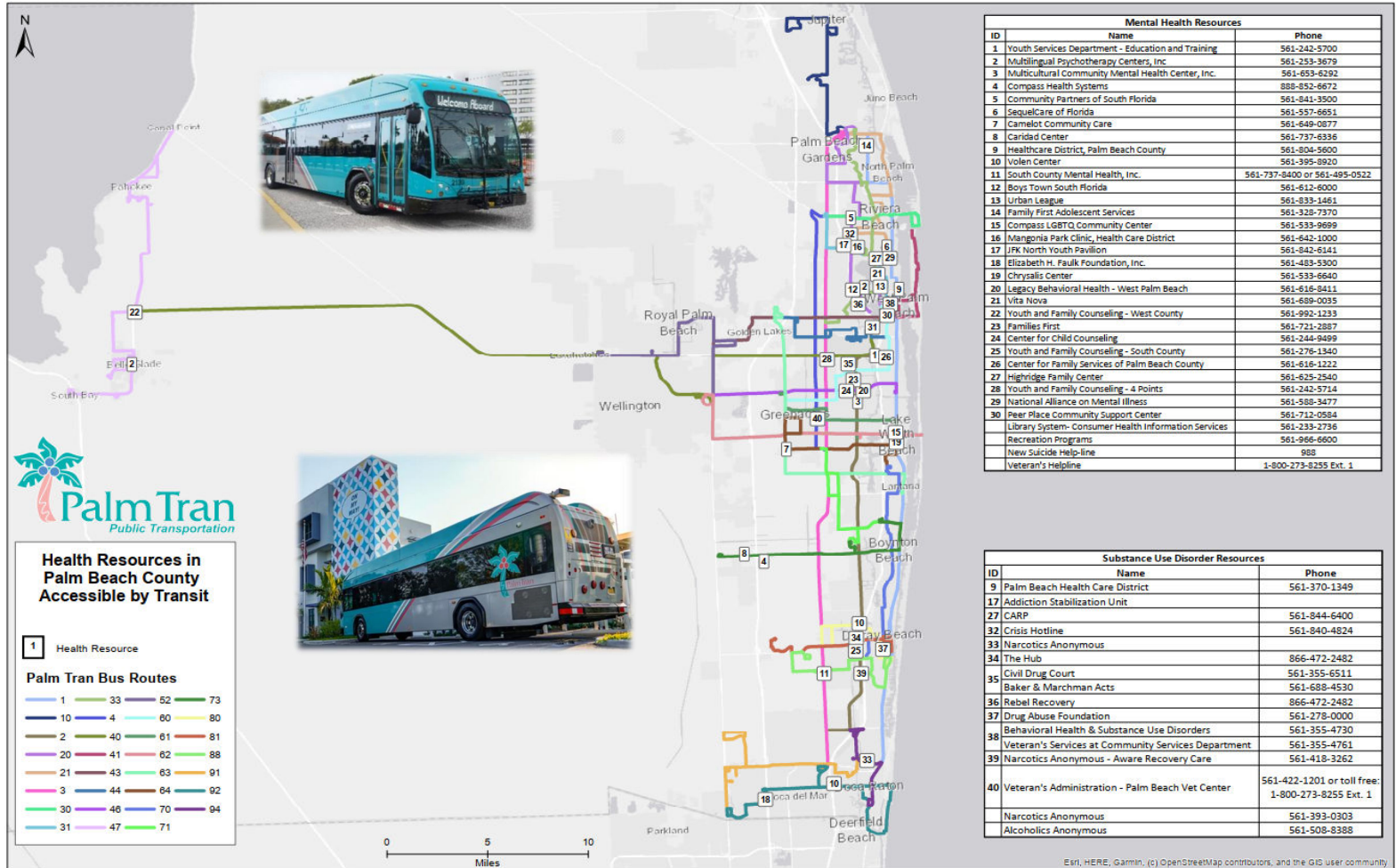


Palm Tran: Chart Your Course to Resources

Substance Use and Mental Health Resource Map

Based on a request from the Board last year, we created a draft version of a user friendly map of substance use and mental health providers along with the associated bus routes to assist riders in getting the assistance they need.

Circulation:
25,000 guides
3x per year



“To provide access to opportunity for everyone; safely, efficiently and courteously.” 13

Palm Beach County Fire Rescue: Saving Lives

Physical Dimension

Medical Emergency Response (911)
 Mobile Integrated Health (MIH) Response
 Hospital/Primary Care/Hospice/Long Term Care/Home Care
 Partnerships



Emotional Dimension

Mobile Integrated Health Medical Social Workers
 Crisis Intervention
 Assessment and Care Plans
 Supportive Counseling
 Trauma Informed Clinical Care
 Grief Counseling
 Warm transition of care to mental health and substance/alcohol
 use disorder care in the community

Patient

Environmental Dimension

Fire Response (911)
 Hoarding Intervention
 Fall Intervention
 Homeless Outreach Team
 Home Safety Assessment
 Fire & Carbon Monoxide Alarm Installs
 Disaster Response
 Red Cross Partnership

Financial & Social Dimension

Bridge to:
 County Services
 Community Agencies
 State Agencies
 Federal and State Programs
 Healthcare Providers
 Mental Health & Substance Use Disorder Providers

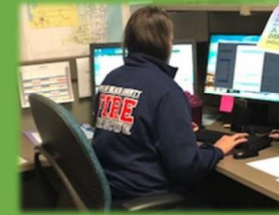
Excellence Today, Improving Tomorrow

Palm Beach County Fire Rescue: Providing Resources

Our Mobile Integrated Health (MIH) Team Served Over **4000** Patients From September 2021 through August 2022



Our Mobile Integrated Health Team Utilized Telehealth & Home Intervention Visits To Reach **2065** Patients Living With Substance & Alcohol Use Disorders from September 2021 through August 2022



**Every 1 Counts,
Every Solution Can
Save A Life!**

Innovation + Compassion =

PBCFR's Emergency Treat & Transport (ET3) Pilot with CMS will offer patients who are medically appropriate and experiencing a psychiatric or mental health crisis immediate access to the mental health care with Alternative Destination Transport (ADT) to

South County Mental Health Crisis Stabilization Unit

(Baker Act & Voluntary Admissions)

MIH Addiction Program:

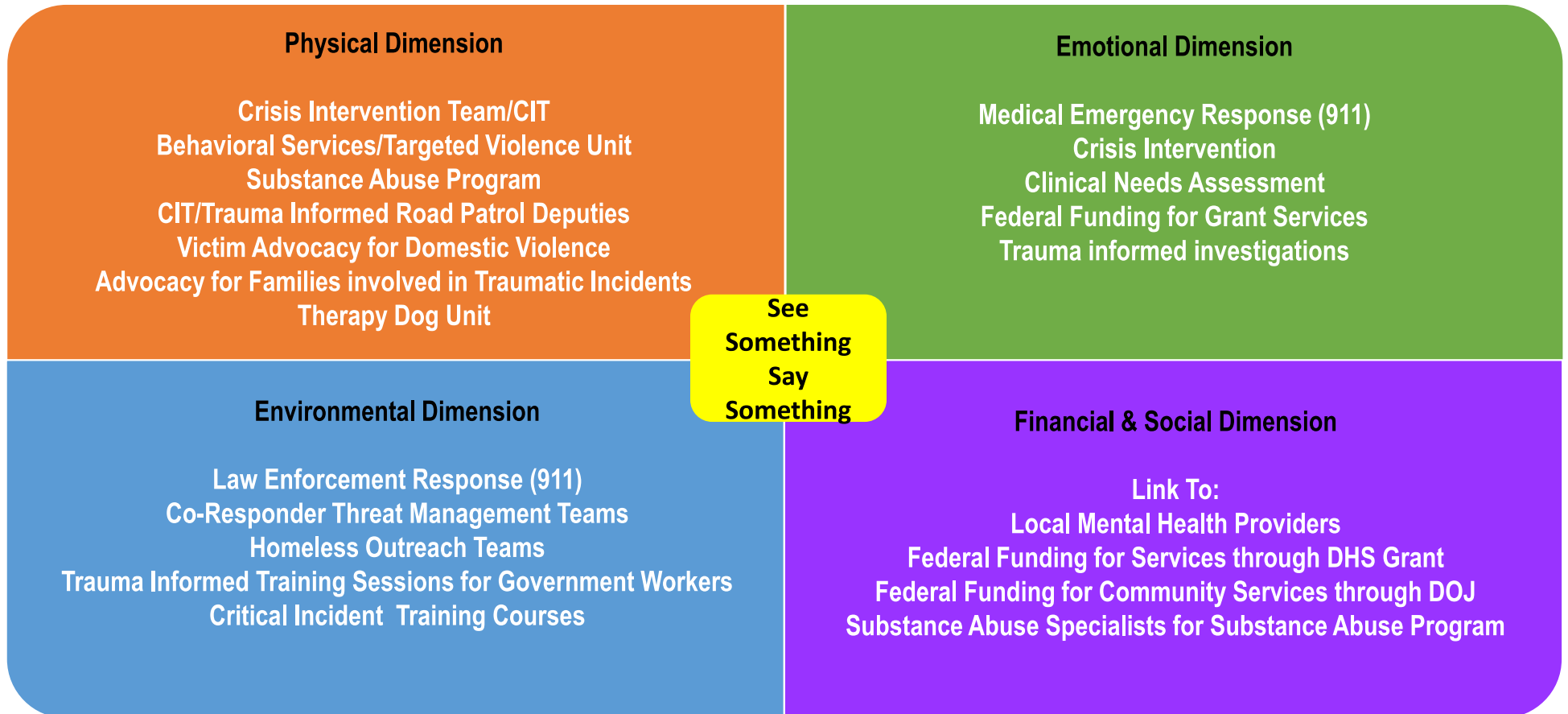
56% acceptance of referral to addiction care resources by patients reached via telehealth

Average **84%** reduction in Emergency Medical Services (EMS) use for program participants who accept referral

PBCFR was the **first** EMS agency in Florida to create an addiction program designed to help patients living with substance use disorders of all types.

Excellence Today, Improving Tomorrow

Palm Beach County Sheriff's Office: Community Response



Palm Beach County Sheriff's Office: Community Intervention

The Behavioral Services Division – Targeted Violence Unit (TVU) focused on preventing community violence has received **873 referrals** from September 2021 through August 2022.

Referrals were received from law enforcement officers, community members, and mental health professionals.

Of those cases, **183 Risk Protection Orders** have been completed on community members.

Our Clinical Staff who work along side law enforcement detectives has worked **425 clinical referrals** while linking community members with services.

139 community members were assisted with federal grant funding for services from September 2021 through August 2022.

Team Work

Teamwork and Community =

The Palm Beach County Sheriff's Office combined with local, state, and federal law enforcement has developed a **county wide task force to combat mass violence** through partnerships with local mental health providers, higher education, and PBC School Board.

The goal is to **educate the public through bystander training** with the help of 211 and Southeast Behavioral Health Network.

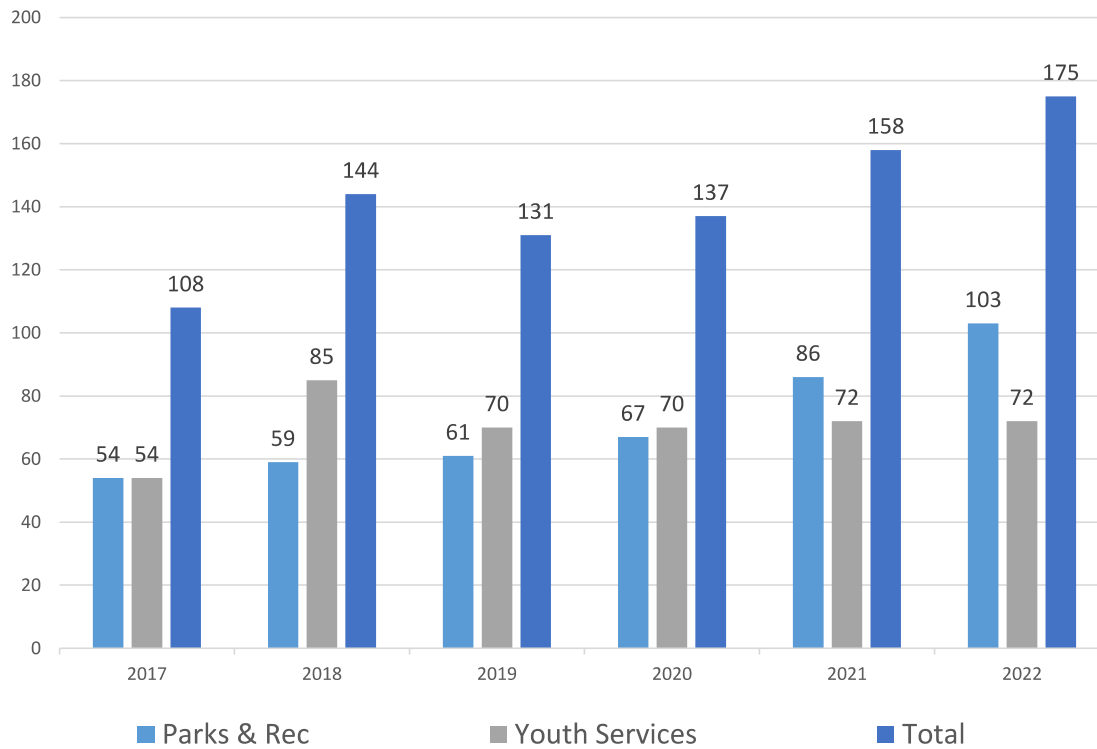
The Substance Abuse Program concentrates on referrals from law enforcement for those who have substance use disorder.

The program works with the individuals who have SUDS and their families.

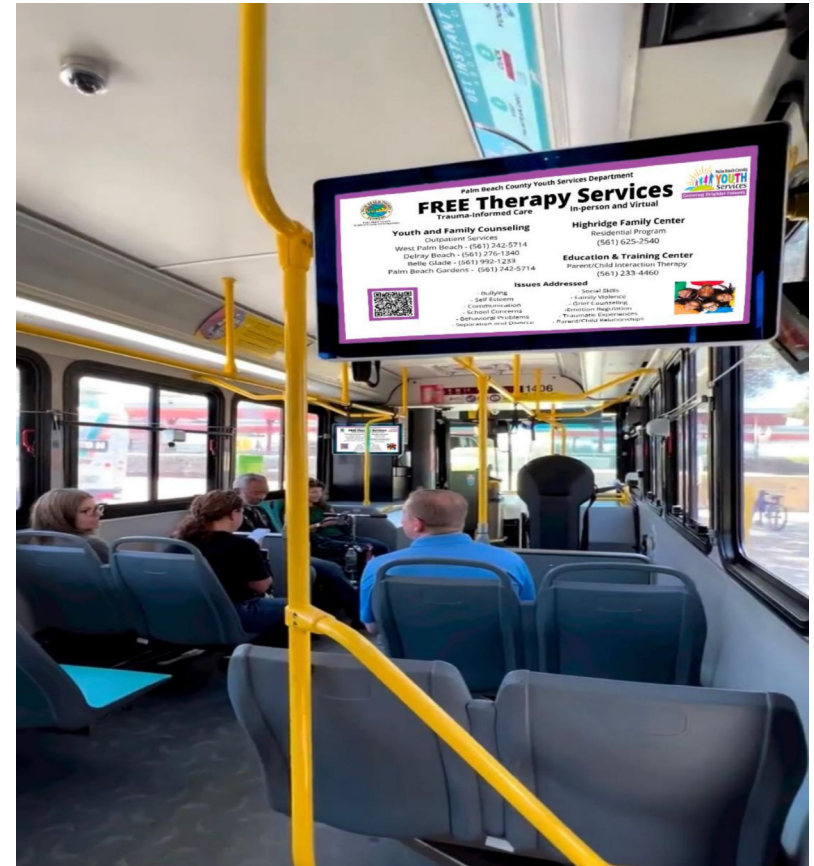
52 referrals received from September 2021 through August 2022.

Outreach Lights The Way – A Beacon of Hope

Education and Outreach Events



Data Sources: Youth Services Department and Parks and Recreation



Free mental health resources in English, Spanish, and Creole on bus screens for all 31 routes.

Palm Beach County Youth Services: Prevention & Education

Emotional Dimension

Free Residential and Outpatient Therapy Programs
 Individual and Group Parenting Programs
 School Based Mental Health Services
 Get Your Green On
 Enhanced Mentoring Program



Social and Physical Dimensions

Robert Wood Johnson Foundation's Culture of Health Prize
 Birth to 22 Alliance -Youth Master Plan
 Summer Camp Scholarship Program
 "Learning From Our Heroes" Group Curriculum
 Girls Coordinating Council
 Future Leaders United for Change
 Community Based Agencies
 Collaboration with Norton Museum of Art

**Children, Teens,
Parents, &
Families**

Environmental Dimension

Sanctuary Model of Trauma Informed Care
 Styrofoam Elimination and Recycling Program
 Partnership with Highridge and Parks for
 Summer Rec Program



Intellectual and Occupational Dimensions

Nationally Accredited Training Site for
 Clinical Psychology Internships & Postdoctoral Fellows
 Weekly Didactic Training for Mental Health Professionals
 Mental Health Focused "Lunch N Learns"
 Annual Self/Growth Assessments
 Student Interns
Behavioral Health Technician Certification Program – 1st
 to be State Approved & available for any school district in FL

Growing Brighter Futures

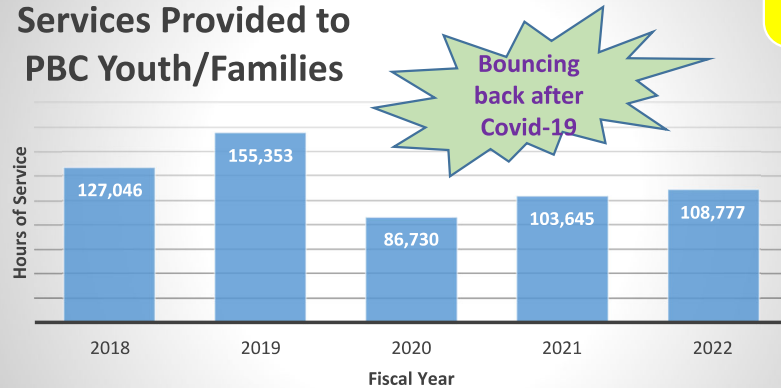
Palm Beach County Youth Services: Outreach & Intervention

3 Community Conversations = Mental Health-Top concern
 1136 families received 7006 sessions
 88% of clients reported increased Resilience
 32 different CBAs receive funding through YSD and provide services based on identified needs and the Youth Master Plan
65% of families served make less than \$50K/yr

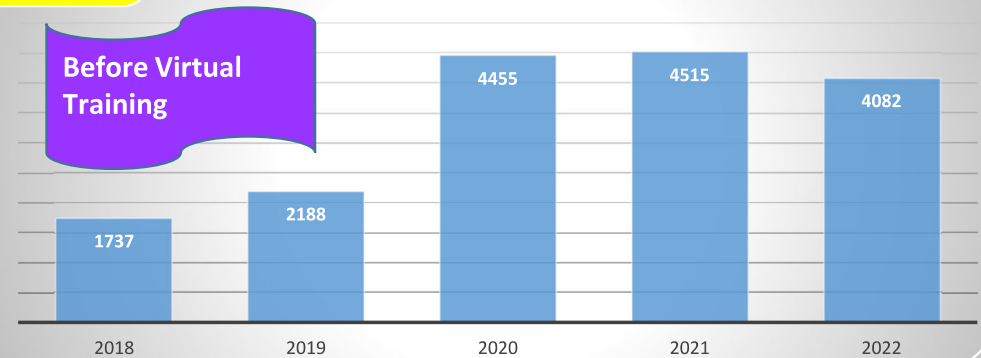
Through Education and Outreach, YSD has provided **training for over 4000 individuals**
 Career Training and Internships for **13** postdoctoral fellows, doctoral interns, practicum trainees, master level social work interns, master level evaluation interns and bachelor level interns
Certified to provide evidence based Parent-Child Interaction Therapy (PCIT)

Palm Beach County Residents, Youth & Families

Services Provided to PBC Youth/Families



Community Members Trained



Growing Brighter Futures

Palm Beach County Victim Services & Rape Crisis Center

Physical Dimension

Coordination of Follow-Up Medical Care
Safety Planning & Information about
Victims' Rights
Criminal Justice Advocacy & Court
Accompaniment



Safe Shelter Referrals
24H Crisis Response to Hospitals, Law
Enforcement Agencies, and Crime Scenes
Sexual Assault Nurse Examiner (SANE) and
Forensic Exam Site

Justice for All!

Emotional Dimension

Crisis Intervention
Individual Counseling &
Therapy Services
Support Groups
Enrichment Activities for
Client Involving Therapy
Dogs



Social Dimension

Crime victim assistance filing for
medical expenses, funeral costs
and loss of support.
Information and referral to
community resources, including
shelters and legal assistance



Justice for All Crime Victims

Palm Beach County Victims Services & Rape Crisis Center



Outreach Events: 127
Number Trained: 9,156

(These include those at tabling events and classroom!)

Victim Services Support Group Offerings!

Monthly

- Women's Empowerment Group** EVERY Monday 4:00p-5:30pm
- Strength and Spirit A Homeless Support Group**

Wednesdays

- Grupo de Empoderamiento Para Mujeres**
- Strive to Thrive** Sexual Assault Support Group
- Group Meets Virtually** Every Wednesday from 3:30pm-5:00pm

Start by Believing!

October 1st- June 30th Statistics

4,773 victims served

25,801 received crisis counseling, safety planning, needs assessment, court accompaniment, legal advocacy, information and/or referrals to community resources. Trauma-Focused Therapy Services provided to **211** clients.

Palm Beach County Victim Services 2022 Staff Satisfaction Survey

TRAUMA-INFORMED SUPERVISION & LEADERSHIP

Mental Health Awareness Month
Celebrate with us on 5/23- 5/27!
Victim & Justice Services

- Monday: Mindful Monday** (10:00am-10:20am) Challenge: Do something today practicing self-care and send.
- Tuesday: Art Therapy** (1:00pm-1:30pm) Challenge: Write a poem, Journal, Draw, Color!, You choose!
- Wednesday: Wind Down Wednesday** (12:15pm-12:45pm) Challenge: Take 10 minutes to "just be". No phones, computers, or other distractions.
- Thursday: Thoughtful Thursday** Challenge: Choose to do 3 acts of kindness today. Examples: Hold the door open for someone, Give a loved a reminder of how special they are, Say thank you to someone you normally would not think to.
- Friday: Fitness Friday** Challenge: Go on a 15 minute walk with your co-workers and take a picture for proof.

ALL WEEK CHALLENGE!!

- Start your morning off this week by writing down 5 things that you are grateful for.
- Drink more water this week!

Please send ALL photos to: kferguso@pbcgov.org

Justice for All Crime Victims

Palm Beach County Parks & Recreation: Improving Overall Wellness

Emotional Dimension

Journaling, nature walks, mindfulness meditation, special events, recreational therapy, sport skill development, yoga, meditation, tai chi, fitness and nutrition education.



Dimensions of Wellness

Social and Physical Dimensions

Over 8,000 acres of parkland are available to discover. Sports, fitness, environmental, and cultural opportunities abound, as well as restful places for solitude, or opportunities to connect.

8 performing/visual arts community centers, 5 nature/interpretive centers, 133 playgrounds, 82 baseball/softball fields, 52 multipurpose fields, 7 swimming pools, 93 championship golf holes.



Environmental Dimension

Environmental education/outdoor recreation programs, interpretive centers, trail-ways, kayak launches, and resource based facilities such as Riverbend Park and County Nature Centers.

Earth days, community gardens, beach/park clean ups, adopt a park program.



Intellectual and Occupational Dimensions

Special Olympics & Arts4All Programming
PBC School District Project ACCESS/resume building/job search/vocational training

Parks to Work Program

Nature Ninja Warrior Program

Student Internship Opportunities



We Create Opportunities for Healthy, Happy Living!

Palm Beach County Parks & Recreation: Getting the Word Out

2,591,870 Website Visitors
39,713 YouTube Views
19,928 WordPress Views

Social media/# of visitors & views indicates growth in awareness of the important relationship between parks and public health.

93% of U.S. adults say their mental health is improved by services offered by local park and recreation professionals and agencies.

National Data

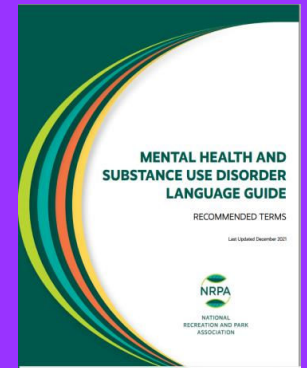
86% of U.S. adults believe it is helpful to have access to the outdoors and nature during stressful times.

3 in 4 U.S. adults want a public walking, hiking and biking trails close to home.

Nearly all (96%) U.S. adults spend time outdoors.

~ 20 to 30 minutes outside reduces stress levels ~

Impacts & Innovation



We Create Opportunities for Healthy, Happy Living!

Palm Beach County Library System: Education & Fun

Intellectual Dimension

Books and e-books, Audiobooks, Computer Classes, Book Discussions, Technology Instruction, Tutor.com, English Exchange, Adult Literacy, Research Services, Multicultural Events and Outreach, Consumer Health Information Service, Genealogy Research

Occupational Dimension

Career Source Representative On Site, Resume Workshops, Database Training, Job Searching Workshops, Business Workshops, Technology Instruction, Tutor.com, Small Business Workshops, Interviewing Workshops, Udemy.com

Library Member

Emotional/Social Dimension

Yoga, Meditation, Tai Chi, Book Discussions, Special Needs Activities, LGBTQ+ activities, Cooking Classes, Craft Classes, Movies, Self-Help Books and Audiobooks, Children's Storytime

Financial Dimension

Partnership with Healthy Mothers Healthy Babies van-Basics for Babies-with a monthly visit to bring basic baby needs. Summer Nutrition Program provides free lunch at all libraries for kids 17 and under. Community Services Representative for LIHEAP and AC assistance. PBC Food Bank Representative for SNAP benefits and Medicaid registration, Consumer Reports Database

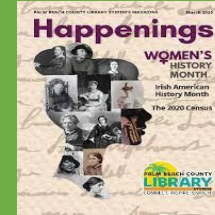
Opening minds to a world of unlimited possibilities

Palm Beach County Library System: Improving Mental Health



Number of Materials Borrowed FY22:

7,830,734



Number of adult members who attended activities
FY22:

30,262

*To Connect
Communities,
Inspire Thought,
and Enrich Lives*



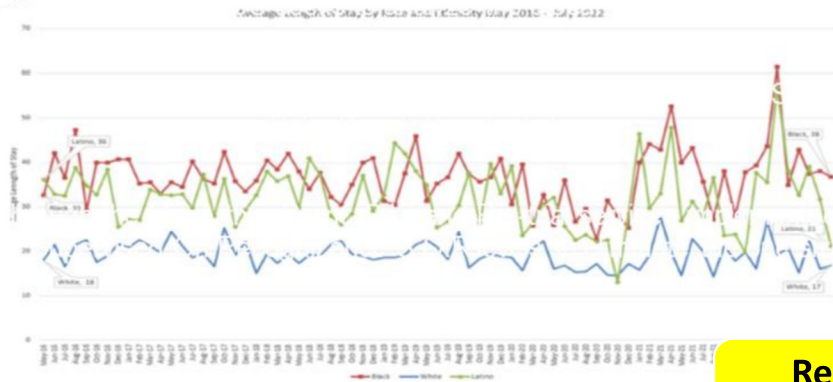
**3,106
Activities in FY22**



Opening minds to a world of unlimited possibilities

Criminal Justice Commission: Making an Impact

Physical Dimension



Emotional Dimension

In collaboration with SEFBHN the PalmFUSE (Frequent Users Systems Engagement) Program was a one-year pilot program that focused on providing appropriate housing options and case management services to homeless individuals coming through the criminal justice system with 3 or more bookings within a 2-year span.

“Next Steps” program in collaboration with SEFBHN and Rebel Recovery – Project works to reduce recidivism and stabilize repeat/chronic low-level offenders through behavioral health and housing interventions- Will begin in the Fall of 2022

Research & Evaluation

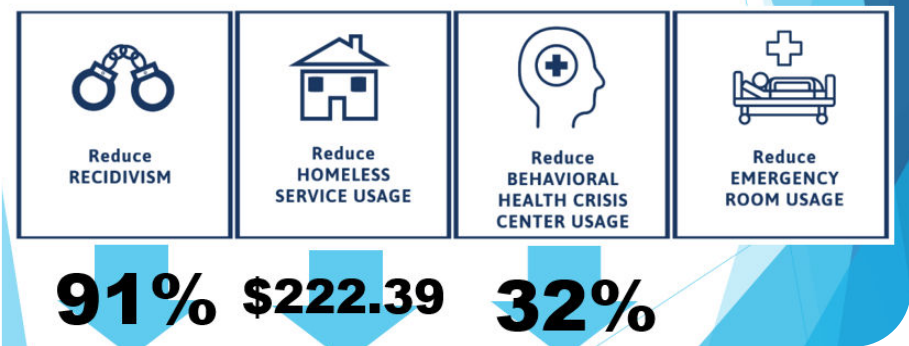
Environmental Dimension

Correction Taskforce :

Assesses the population status of all correctional facilities owned or operated by Palm Beach County;

Formulates recommendations to ensure that the bed space of all the County’s correctional facilities is used as efficiently as possible, and to bring these recommendations forward to the Criminal Justice Commission

Financial & Social Dimension



Improving Justice Outcomes

Criminal Justice Commission: Community Matters

Emotional Dimension

Palm Beach County Sheriff Office and Palm Beach State College in collaboration with Criminal Justice Commission launched the Trauma-Informed *Train-the-Trainer* course for Criminal Justice Professionals (Law Enforcement, Courts, Corrections) and Community-based agencies.

55 Professionals trained

Evaluation of Delray Beach Police Department's Community Outreach Project to determine impact and scalability—This project is an initiative led by law enforcement that offers alternatives to arrest through behavioral health interventions – Slated to begin in the Fall of 2022.



Research & Evaluation

Social Dimension

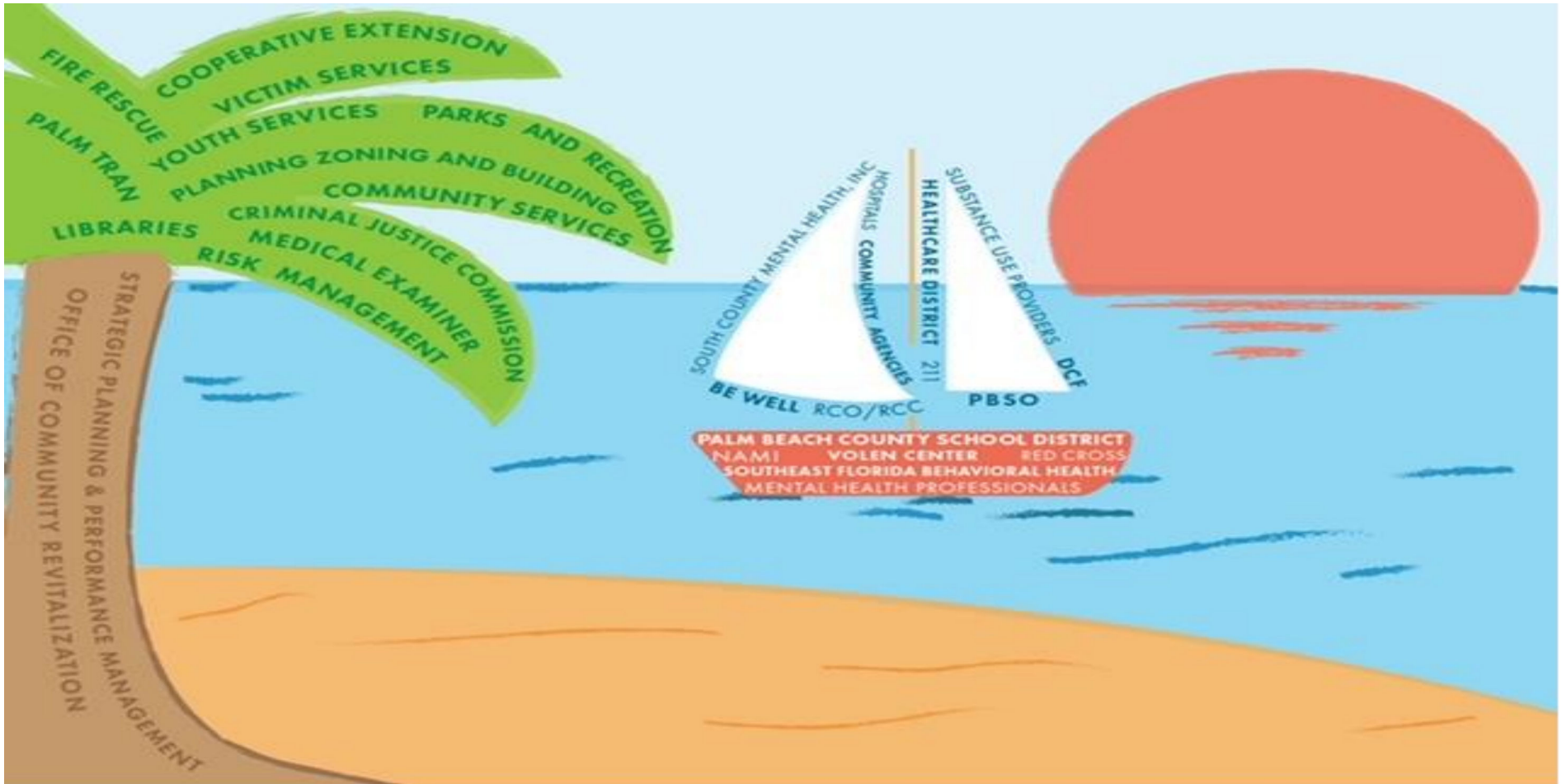
CJC hosted 9 Policing Forums and “Dialogue to Change”
These platforms provided a space for community members to express themselves on the criminal justice system.

This collaborative process seeks to build trust through open honest discussions.

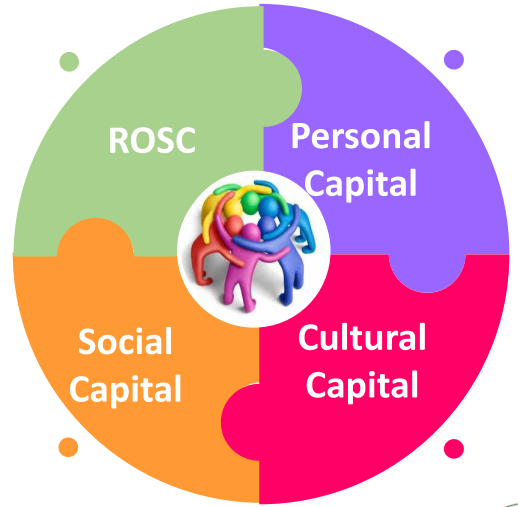
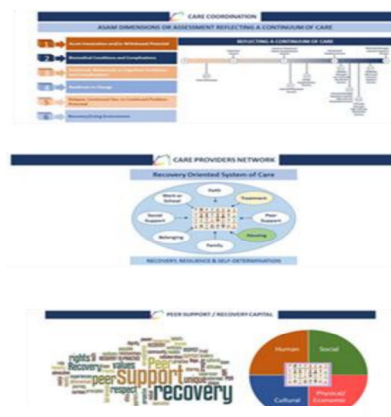


Improving Justice Outcomes

Our System of Care



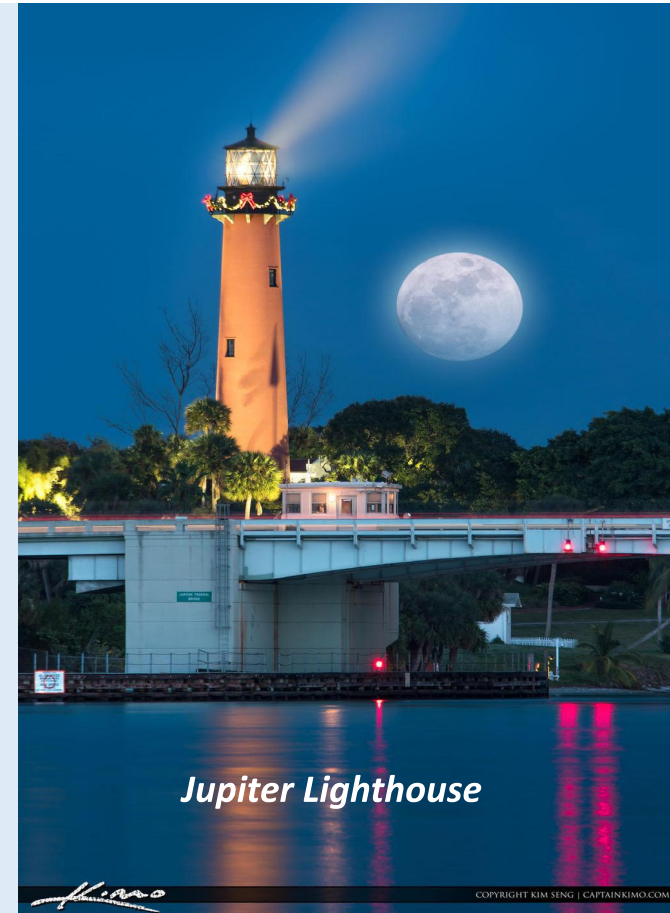
Community Collaborations - Executing the Vision

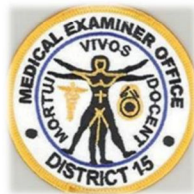


Substance Use and Behavior Disorders CDT continues to light the way in 2023

Next Steps

- Finalize the Substance Use/Mental Health Disorder Resources & Routes guide with a focus on education, prevention, and intervention to save lives.
- “Next Steps” program in collaboration with SEFBHN with a focus on individuals with Behavioral Health and Substance Use Issues.
- Continue to use data driven decision-making for substance use and mental health program funding and locations.
- Continue to expand access points to mental health, substance and alcohol use care for adults and youth.
- Promote trauma informed care methodologies for all levels of care.
- Continue to expand peer support services across all levels of recovery.
- CJC will evaluate the Delray Beach Outreach Project to determine the impact and scalability to other Palm Beach County communities.
- In response to Dialogues to Change Community Actions, the CJC will seek to partner with the City of Lake Worth Beach to facilitate a behavioral health response pilot.
- Continue collaborating with County Departments and outside entities.






**THANK
YOU**
for listening
**ANY
QUESTIONS?**