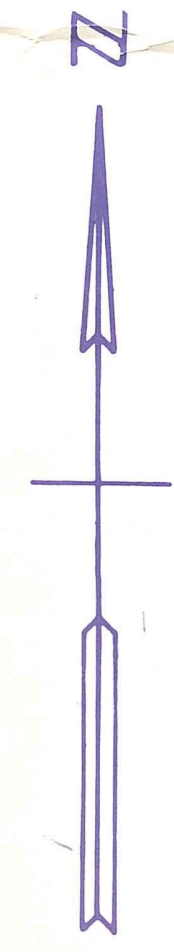


Palm Beach County (County) makes no representation or warranties whatsoever on the attached / enclosed information reflected herein pertaining to easements, rights-of-way, setback lines, reservations, agreements, and other similar matters. The information provided herein should not be relied upon by the requesting party to confirm the existence / non-existence of facts contained herein.



SEA ROAD 7-1-02 DEDICATED TO THE PUBLIC AS 7-15 NO DEEDS TO PISC

PALM BEACH SHORES ACRES SUB 05 CODED IN SEC 34

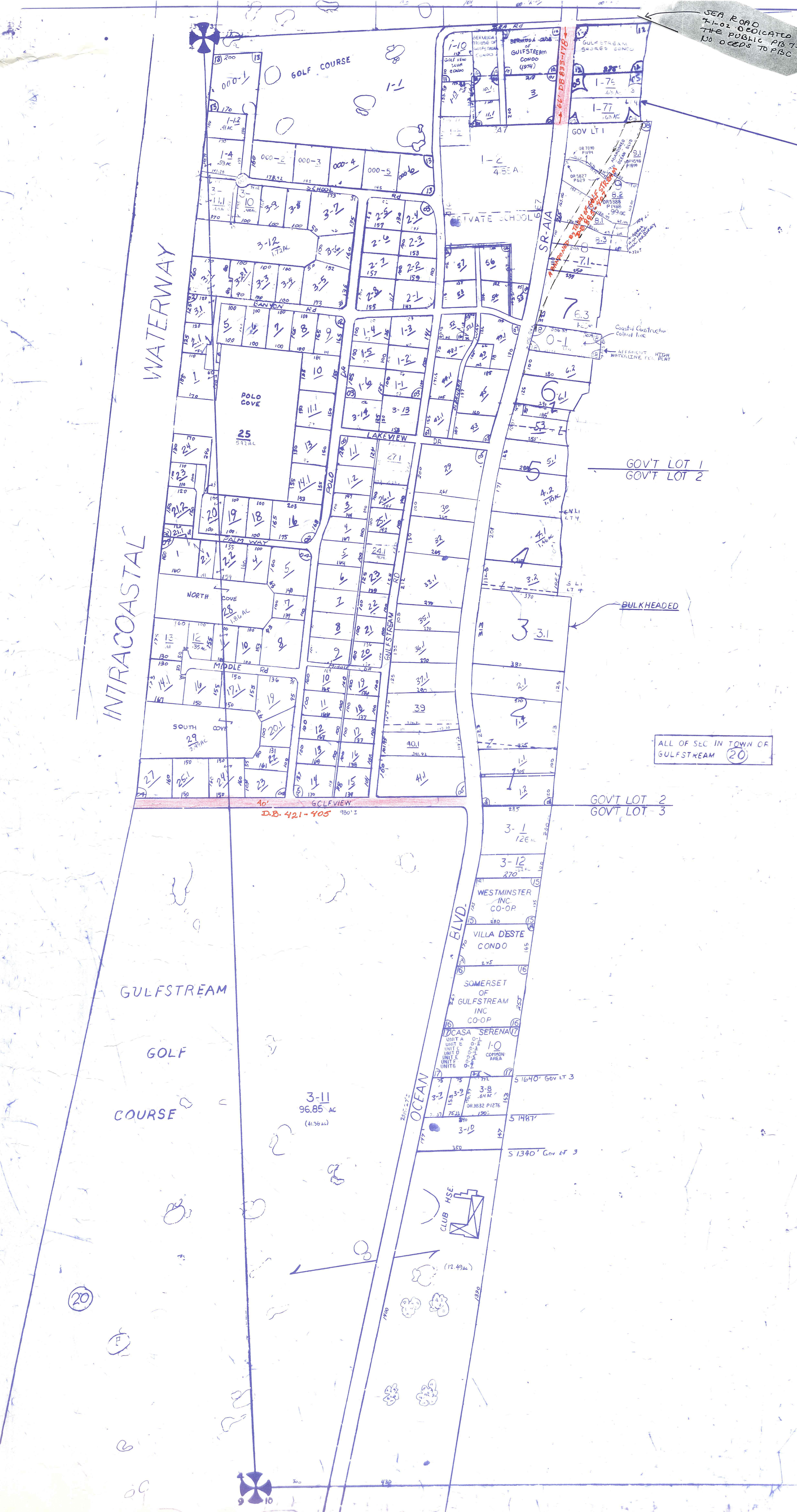
- N 01 BERMUDA HEIGHTS PB23P200
- N 02 POLO COVE PB 24P73
- N 03 POLO FIELDS NO 1 PB26P13
- N 04 GULFSTREAM COVE PB24P185
- N 05 GULFSTREAM PROPERTIES PB18P27 & 98
- N 06 GULFSTREAM PROPERTIES NO 2 PB18P42
- N 07 REPLAT OF GULFSTREAM PROP NO 2 PB20P21
- E 08 GULFSTREAM OCEAN TRS PB16P81 PB18P75
- S 09 VILLA D'ESTE CONDO
- N 10 BERMUDA CLUB OF GULFSTREAM CONDO
- N 11 GOLFVIEW CLUB CONDO
- N 12 GULFSTREAM SHORES CONDO
- N 13 H-V POPE SUB (76) PB31P53
- N 14 BERMUDA HOUSE OF GULFSTREAM CONDO
- S 15 WESTMINSTER INC CO-OP
- S 16 SOMERSET OF GULFSTREAM INC CO-OP
- S 17 CASA SERENA OR4727P103
- N 18 M M W BEACHHOUSE LT PL (90) PB63P10

GOVT LOT 1
GOVT LOT 2

BULKHEADED

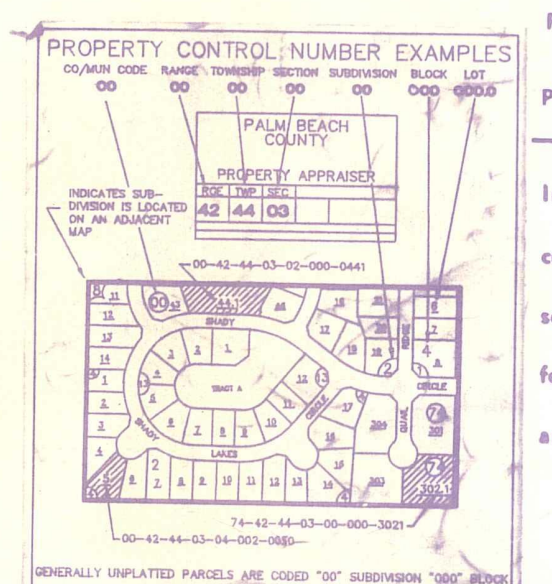
ALL OF SEC IN TOWN OF GULFSTREAM (20)

GOVT LOT 2
GOVT LOT 3



ATLANTIC OCEAN

NOTE
NOT TO BE REPRODUCED IN ANY FORM EXCEPT BY EXPRESS WRITTEN CONSENT FROM THE PALM BEACH COUNTY PROPERTY APPRAISER
Information shown herein compiled from the best available sources and CANNOT be used for surveys or land transfers of any type.



PALM BEACH COUNTY
GARY R. NIKOLITS
PROPERTY APPRAISER

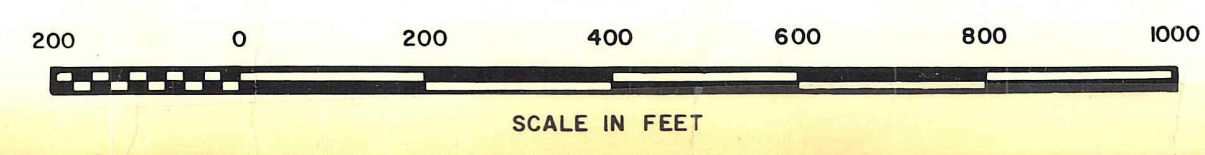
36	31	32	33	34	35	36	31
1	6	5	4	3	2	7	0
42	7	8	9	10	11	12	7
13	18	17	16	15	14	13	18
24	19	20	21	22	23	24	19
25	30	29	28	27	26	25	30
36	31	32	33	34	35	36	31
1	6	5	4	3	2	7	0

RGE	TWP	SEC
43	46	3
SCALE		
DRAWN BY		
UPDATED		

Palm Beach County (County) makes no representation or warranties whatsoever on the attached / enclosed information reflected herein pertaining to easements, rights-of-way, setback lines, reservations, agreements, and other similar matters. The information provided herein should not be relied upon by the requesting party to confirm the existence / non-existence of facts contained herein.



BROCKWAY, OWEN & ANDERSON ENGINEERS, INC.
ENGINEERS, PLANNERS, SURVEYORS
WEST PALM BEACH, FLORIDA



Aerial Photo Date — 10-23-70

NOTE:
NOT TO BE REPRODUCED IN
ANY FORM EXCEPT BY EXPRESS
WRITTEN CONSENT FROM THE
PALM BEACH COUNTY
ASSESSOR.
Information shown hereon is
compiled from the best available
sources and CANNOT be used
for surveys or land transfers of
any type.

PALM BEACH COUNTY			
S.45			
DAVID L. REID			
County Assessor			
RGE	TWP	SEC	AERIAL
43	46	S.45 3	No. 1170
SCALE		1"=200'	