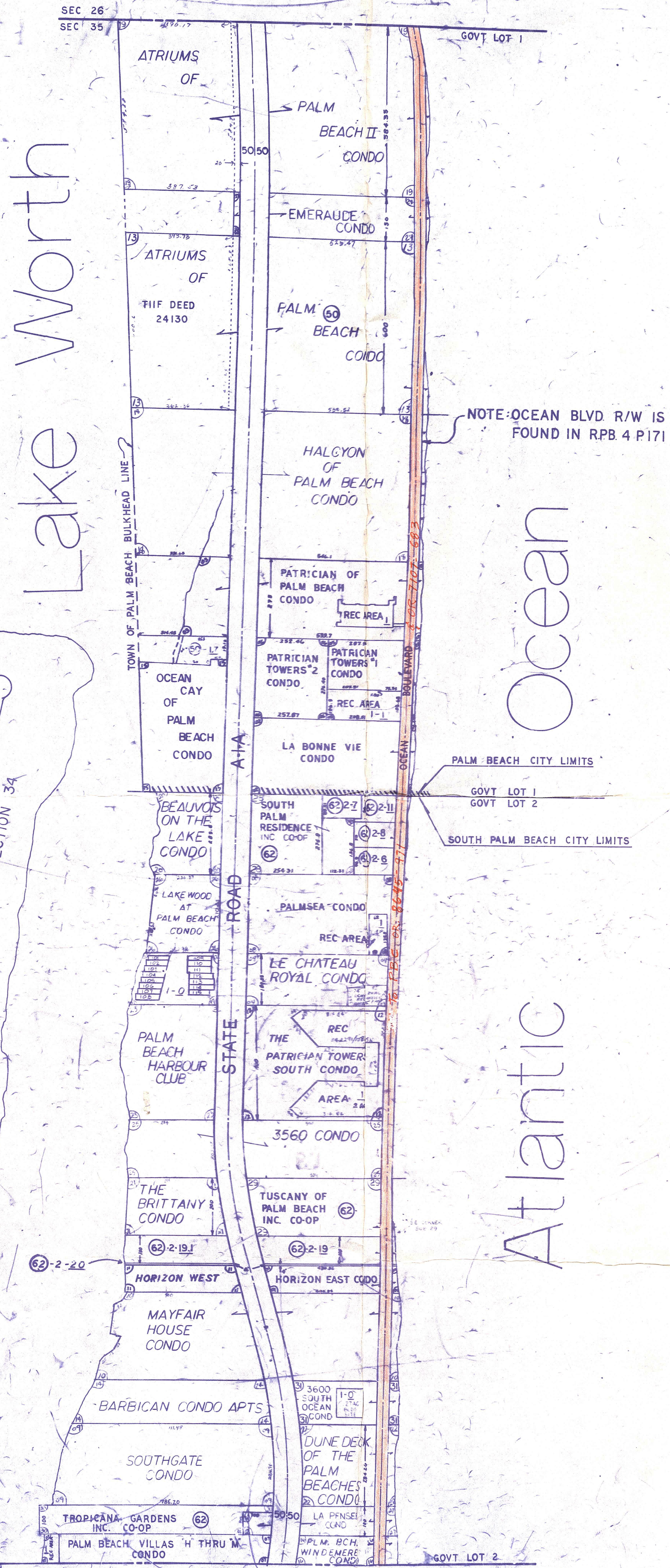


Palm Beach County (County) makes no representation or warranties whatsoever on the attached / enclosed information reflected herein pertaining to easements, rights-of-way, setback lines, reservations, agreements, and other similar matters. The information provided herein should not be relied upon by the requesting party to confirm the existence / non-existence of facts contained herein.



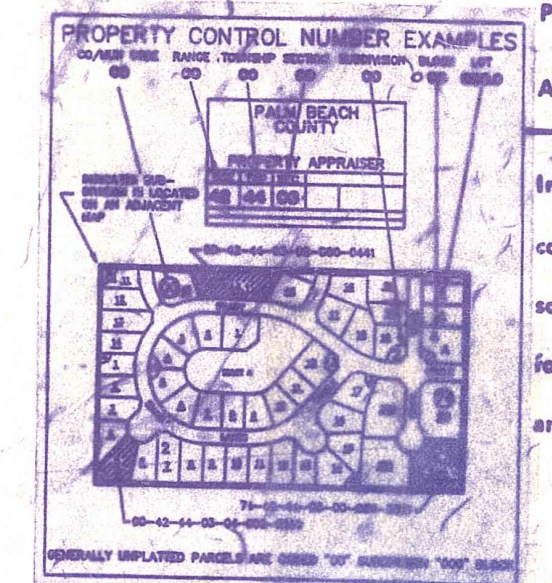
- S 1/2 01 HORIZON EAST CONDO (62)
- N 1/2 02 LA BONNE VIE CONDO (60)
- N 1/2 03 PATRICIAN OF P.B. CONDO (60)
- S 1/2 04 LE CHATEAU ROYAL CONDO (62)
- N 1/2 05 PATRICIAN TOWERS 1 CONDO (60)
- N 1/2 06 PATRICIAN TOWERS 2 CONDO (60)
- S 1/2 07 PALM BEACH VILLAS CONDO (62)
- S 1/2 08 PALMSEA CONDO (62)
- S 1/2 09 SOUTHGATE CONDO (62)
- S W 1/4 10 MAYFAIR HOUSE CONDO (62)
- S 1/2 11 HORIZON WEST CONDO (62)
- S 1/2 12 PATRICIAN TOWERS SOUTH CONDO (62)
- N 1/2 13 ATRIUMS OF PALM BEACH II CONDO (60)
- N 1/2 14 BARBICAN CONDO APTS (62)
- N 1/2 15 OCEAN CAY OF PALM BEACH CONDO (60)
- S 1/2 16 PALM BEACH WINDEMERE INC. CONDO (62)
- S 1/2 17 SAUSALITO TR 30-110 (62)
- N 1/2 18 HALCYON OF PALM BEACH CONDO (60)
- N 1/2 19 ATRIUMS OF PALM BEACH II CONDO (60)
- S 1/2 20 BEAUVOIS ON THE LAKE (1980) (62)
- S 1/2 21 THE BRITTANY CONDO (1980) (62)
- S 1/2 22 DUNE DECK OF THE PALM BEACHES CONDO (62)
- S 1/2 23 PALM BEACH HARBOUR CLUB (1980) (62)
- N 1/2 24 EMERALUDE CONDO (1983) (60)
- S 1/2 25 THIRTY-FIVE SIXTY CONDO (62)
- S 1/2 26 LAKEWOOD AT PALM BEACH CONDO (66)
- S 1/2 27 LA PENSE CONDO (86) (62)
- S 1/2 28 SOUTH PALM RESID INC INC CO-OP (62)
- S 1/2 29 TUSCANY OF PALM BEACH INC CO-OP (62)
- S 1/2 30 TROPICANA GARDENS INC CO-OP (62)
- S 1/2 31 THIRTY SIX HUNDRED SOUTH OCEAN CONDO (62)

NOTE: OCEAN BLVD R/W IS FOUND IN RPB 4 P171

PALM BEACH CITY LIMITS  
GOVT LOT 1  
GOVT LOT 2  
SOUTH PALM BEACH CITY LIMITS

NOTE: N 1/2 IS IN PALM BEACH (60)  
S 1/2 IS IN SOUTH PALM BEACH (62)

NOTE:  
NOT TO BE REPRODUCED IN ANY FORM EXCEPT BY EXPRESS WRITTEN CONSENT FROM THE PALM BEACH COUNTY ASSESSOR.



Information shown hereon is compiled from the best available sources and CANNOT be used for surveys or land transfers of any type.

PALM BEACH COUNTY  
GARY R. NIKOLITS  
PROPERTY APPRAISER

36	37	32	33	34	35	36	37
1	2	3	4	5	6	7	8
12	7	8	9	10	11	12	7
13	18	17	16	15	14	13	18
24	19	20	21	22	23	24	19
25	30	29	28	27	26	25	30
36	31	32	33	34	35	36	31
4	9	8	7	6	5	4	9

RGE	TWP	SEC	AERIAL
43	44	35	NO 70-10
SCALE	1"=200'		
DRAWN BY	OLLIS 2-22-75		
UPDATED			

DRAWN FROM AERIAL PHOTO DATED DEC 1973