

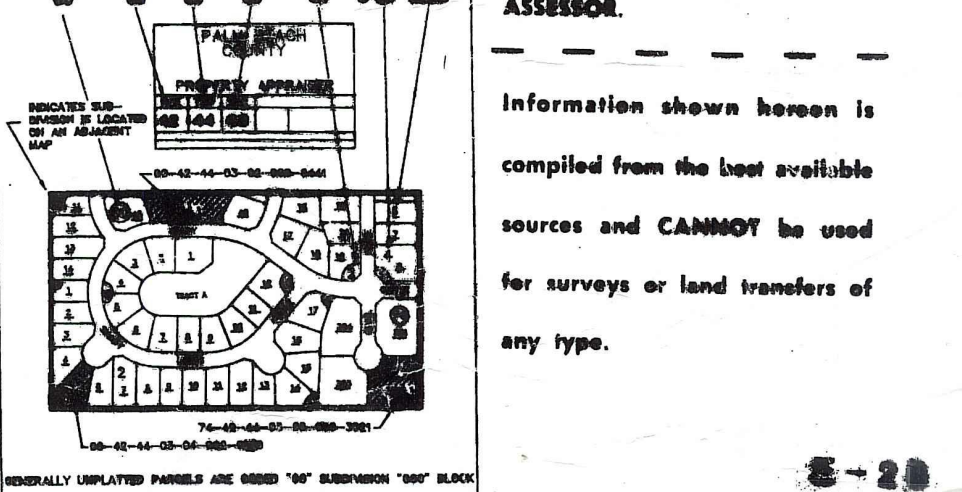
Palm Beach County (County) makes no representation or warranties whatsoever on the attached / enclosed information reflected herein pertaining to easements, rights-of-way, setback lines, reservations, agreements, and other similar matters. The information provided herein should not be relied upon by the requesting party to confirm the existence / non-existence of facts contained herein.

- #MO1-CITY OF ATLANTIS NO 2 PB 27 P 78
- SW02-ATLANTIS VILLAS 27 241
- ME03- PLAT NO 4 28 97
- ME04-YORKTOWNE VILLAS 28 107
- ME05-ATLANTIS NO 5 28 147
- ME06-THE TUDOR CONDO 28 149
- ME07-RIO VISTA VILLAS 28 168
- ME08-DRIFTWOOD 28 174
- ME09-ATLANTIS NO 6 28 217
- ME10-CEDAR KEY VILLAS 29 25
- ME11-COLONY KEY 29 68
- ME12-ATLANTIS REGENCY CONDO 29 176
- ME13-FRENCH ROYAL VILLAS 29 176
- ME14-ATLANTIS REGENCY EAST CONDO 29 176
- ME15-ATLANTIS SHERBROOKE VILLAS 29 176
- ME16-CITY OF ATLANTIS NO 8 29 176
- ME17-PINE VILLAS PL 10 PB30P47&48 29 176
- ME18- PL 9 PB30P57 29 176
- ME19-TUDOR II NORTH CONDO 29 176
- ME20- " SOUTH 29 176
- ME21-CITY OF ATLANTIS PL 7 PB30P74 29 176
- ME22-THE TUDORS IN THE PINES CONDOS 29 176
- ME23-ATLANTIS SHERBROOKE VILLAS EAST CONDO 29 176
- ME24-ATLANTIS CITY OF PL 14A (1978) PB32P200 29 176
- ME25-ATLANTIS CITY OF PL 14B (1978) PB33P142 29 176
- ME26-ATLANTIS ATRIUMS TRS-1 (1979) PB 35 P96 29 176
- ME27-ATLANTIS SHERBROOKE VILLAS SOUTH (1981) 29 176
- ME28-FOUR SOME ATLANTIS CONDO (1983) 29 176
- ME29-ATLANTIS CITY OF PL 14C (85) PB47P55 29 176
- ME30-J.F.K. MEDICAL CENTRE COND (85) 02 (86) 29 176
- ME31-ATLANTIS CITY OF PL 15 (85) PB48P101 29 176
- ME32-CARILLON COND (89) 29 176
- ME33-EASTWIND OF ATLANTIS COND (91) 02 29 176
- ME34-1/2 34 FAIRVIEW OF ATLANTIS (91) P406 P40 29 176
- ME35-PALMS AT ATLANTIS (99) PB44P92 29 176

ALL OF SEC W OF CONGRESS CODED 02

NOTE - LANTANA RD:
 - D.C. DISPOSED THE NORTH 65' OF THE 5.80' OF SECT. 31-44-42 TO D.O.T. D. 917-522
 - SOUTH 40' OF SECT. 31-44-42 IS L.W.D.D. TO P.B.C. BY OR 52-06-143.

NOTE:
 NOT TO BE REPRODUCED IN ANY FORM EXCEPT BY EXPRESS WRITTEN CONSENT FROM THE PALM BEACH COUNTY ASSESSOR.



PALM BEACH COUNTY
GARY R. NIKOLITS
 PROPERTY ASSESSOR

RGE	TWP	SEC	AERIAL
43	44	31	NO 700
SCALE: 1" = 200'			
DRAWN BY: [Signature]			
UPDATED: 10/13/02			

NOTE:
 SUB 35 CODED TO 42-44-36
 SUB 35 NOT TO SCALE

HIATUS

ATLANTIS PLAT NO 15
 CODED IN 02-42-44-36-20-025-0350

ATLANTIS PLAT NO 1
 CODED SEC 36-44-42-11
 FB 26 P222

SEE 42-41-36

PLANNING 44-111 10089