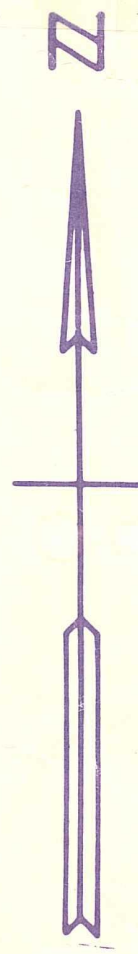
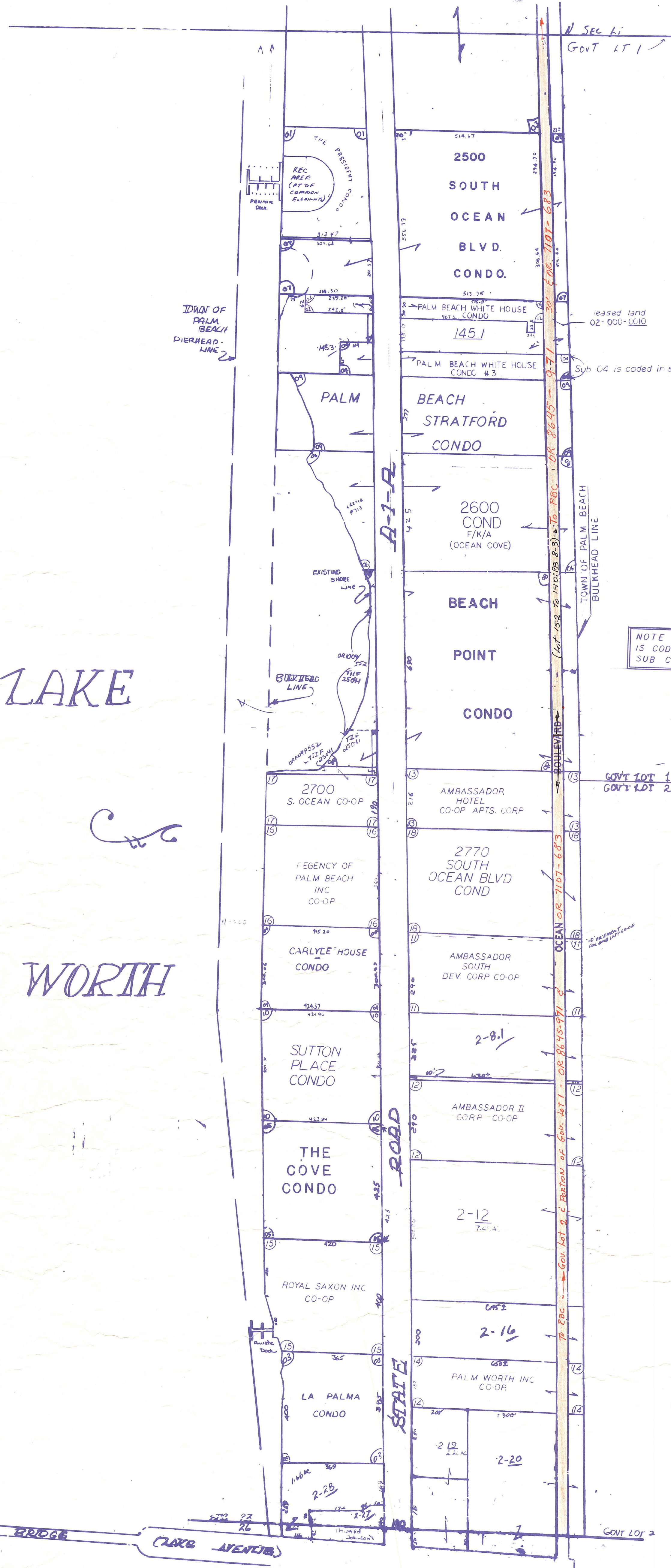


Palm Beach County (County) makes no representation or warranties whatsoever on the attached / enclosed information reflected herein pertaining to easements, rights-of-way, setback lines, reservations, agreements, and other similar matters. The information provided herein should not be relied upon by the requesting party to confirm the existence / non-existence of facts contained herein.



INTRACOSTAL WATERWAY

LAKE WORTH

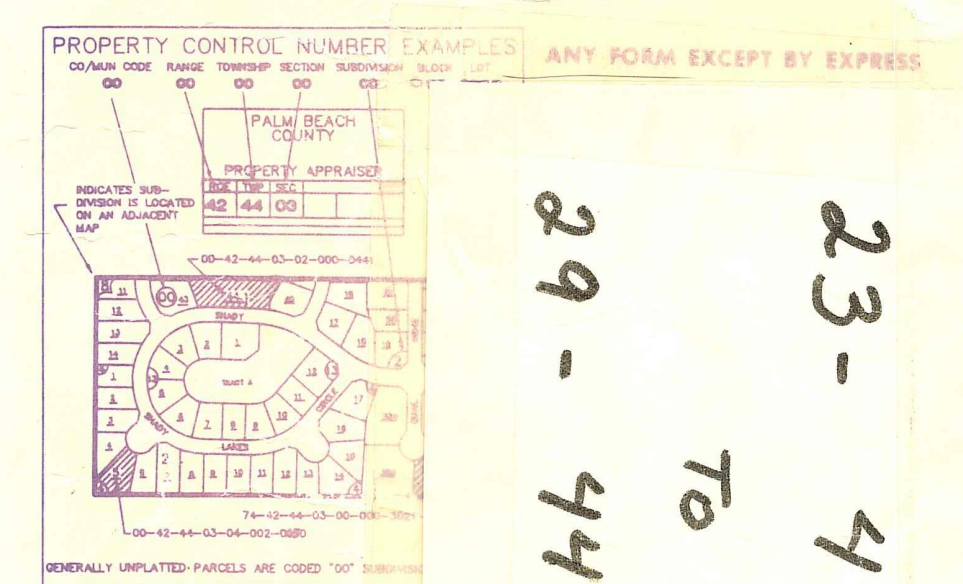


NOTE PALM BEACH ESTATES IS CODED TO SECTION 11 SUB CODE 03

Atlantic Ocean

- 01 PRESIDENT CONDO
- 02 PALM BEACH WHITE HOUSE
- 03 LA PALMA CONDO
- 04 CARLYLE HOUSE CONDO (1982)
- 05 THE COVE CONDO
- 06 2600 COND (OCEAN COVE) (1978)
- 07 2500 SOUTH OCEAN BLVD CONDO (1978)
- 08 BEACH POINT CONDO (1980)
- 09 PALM BEACH STRATFORD CONDO 80
- 10 SUTTON PLACE CONDO (1962)
- 11 AMBASSADOR SOUTH DEV CORP CO-OP
- 12 AMBASSADOR II CORP CO-OP
- 13 AMBASSADOR HOTEL CO-OP APTS CORP
- 14 PALM WORTH INC CO-OP
- 15 ROYAL SAXON INC CO-OP
- 16 REGENCY OF PALM BEACH INC CO-OP
- 17 2700 S OCEAN CO-OP
- 18 2770 SOUTH OCEAN BLVD COND (91)

NOTE: ALL OF SEC 15 IN PALM BEACH-50



23 - 44 - 43
to
29 - 44 - 43

36	31	32	33	34	35	36	37
1	8	5	4	3	2	1	6
12	7	8	9	10	11	12	7
13	18	17	16	15	14	13	18
24	19	20	21	22	23	24	19
25	30	29	28	27	26	25	30
36	31	32	33	34	35	36	31
1	8	5	4	3	2	1	6

RGE TWP SEC AREA
43 44 23 11795

SCALE 1"=200'

DRAWN BY