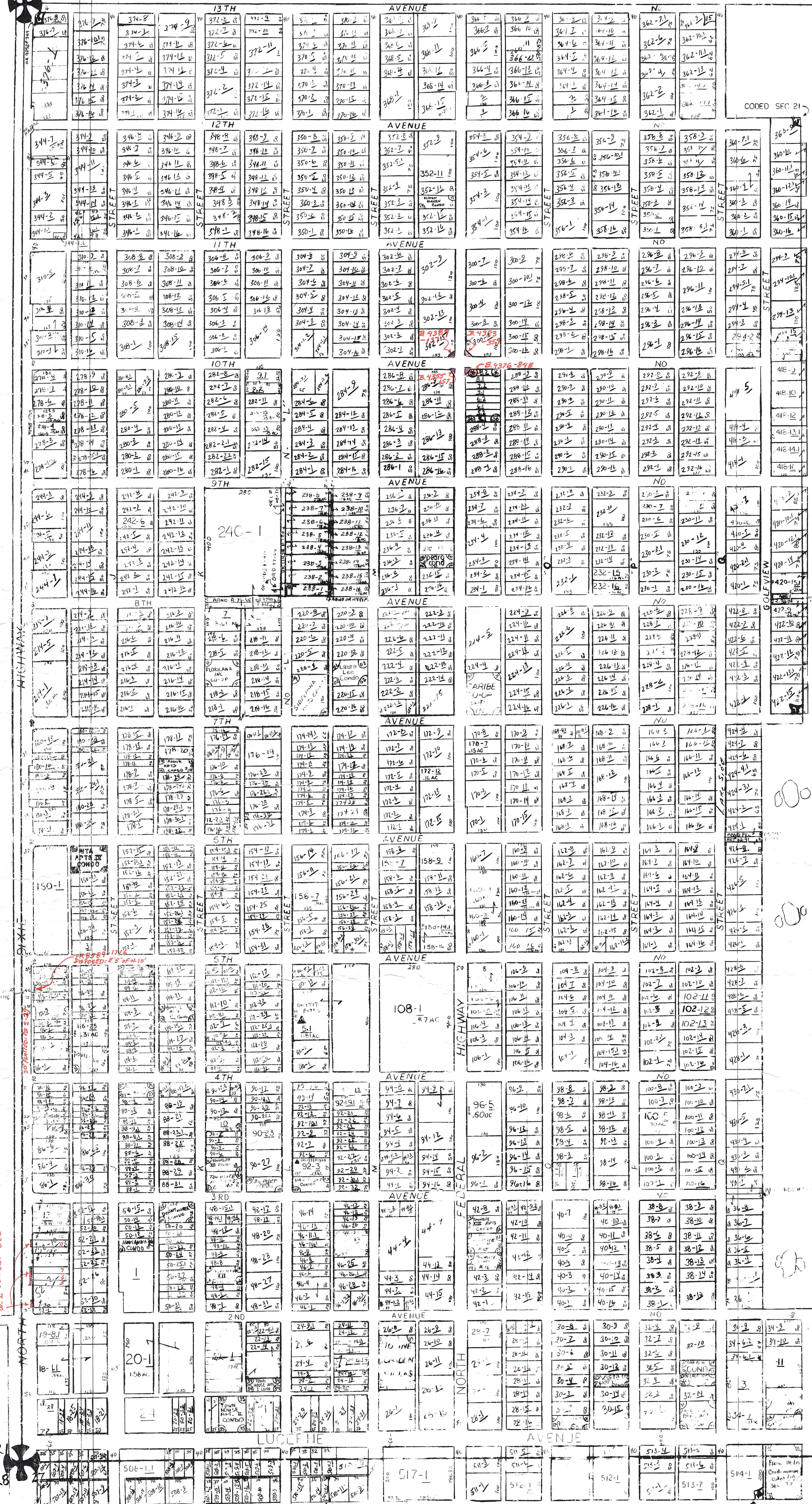


Palm Beach County (County) makes no representation or warranties whatsoever on the attached / enclosed information reflected herein pertaining to easements, rights-of-way, setback lines, reservations, agreements, and other similar matters. The information provided herein should not be relied upon by the requesting party to confirm the existence / non-existence of facts contained herein.

501 SEC 15



- SW 01 TOWNSITE APTS ONE COND
- NW 02 LAURA LEE COND
- SW 03 HOVIANNA APTS COND
- NW 04 SIBELIANA APTS COND
- SW 05 TOWNSITE APTS FIVE COND
- SW 06 SIX LUCERNE COND
- SW 07 TOWNSITE APTS SEVEN COND
- SW 08 TOWNSITE APTS NINE COND
- SW 09 VAU SCOTT COND
- SW 10 JO MYRT SUITES COND
- SW 11 TOWNSITE X11 COND (BLK 90)
- SW 12 TOWNSITE X111 COND (BLK 92)
- SW 13 TOWNSITE 15 COND (BLK 42)
- SW 14 TOWNSITE 16 COND (BLK 42)
- SW 15 THE DOWNTOWNER COND (BLK 50)
- SW 16 HOVIANNA V11 APTS COND (BLK 50)
- NW 17 ELEVEN ELEVEN COND (1978) (BLK 352)
- SW 18 ENN APTS COND (1978) (BLK 170) TERMINATED 01/15/84 P.159
- SW 19 ANNE APTS COND (1980) (BLK 178)
- SW 20 RITA APTS IV COND (1980) (BLK 150)
- SE 21 FAIRWAY LAKE APTS (1981) (BLK 34)
- SW 22 PALM HAVEN GOND (1981) (BLK 172) TERMINATED 01/15/84 P.159
- SW 23 TOWNE GARDEN VILLAS (1981) (BLK 26)
- SW 24 HOVIANNA XII APTS COND (1981) (BLK 48)
- SW 25 HOVIANNA V APTS COND (1982) (BLK 88)
- NW 26 PEDRO COND (1984) (BLK 236)
- SW 27 VISTA PALM COND (1984) (BLK 30)
- SW 28 LAKE PALM COND (1985) (BLK 32)
- SW 29 WINFORD GOND (1985) (BLK 148) TERMINATED 01/15/84 P.159
- NW 30 CARIBE CO-OP APTS INC
- SW 31 FLORICANA INC CO-OP
- SW 32 LAKESIDE DRIVE APTS INC CO-OP
- SW 33 NORTH LAKESIDE CORP OF LAKE WORTH INC CO-OP
- SW 34 TOWN HOUSE APTS I COND (81)
- SW 35 TOWN HOUSE APTS II COND (81)
- NW 36 PICKFORD PLACE (2002) PB92P80

NOTE: ALL SEC IN LAKE WORTH (38)
TOWN OF LAKE WORTH
CODED SEC 21 SUB 15

NOTE:
NOT TO BE REPRODUCED IN ANY FORM EXCEPT BY EXPRESS WRITTEN CONSENT FROM THE PALM BEACH COUNTY ASSESSOR.

Information shown herein is compiled from the best available sources and CANNOT be used for surveys or land transactions.

PROPERTY CONTROL NUMBER EXAMPLES

DATE: 11/15/00

NOTE:
TOWN OF LAKE WORTH CODED (15) IN SECTION 21

PLM BEACH COUNTY
GARY R. NIKOLITS
PROPERTY APPRAISER

RGE	TWP	SEC	AERIAL
43	44	22	NO 1179

SCALE: 1"=200'

DRAWN BY: O. H. S. 11/16/01

UPDATED: 2/20/02