

Palm Beach County (County) makes no representation or warranties whatsoever on the attached / enclosed information reflected herein pertaining to easements, rights-of-way, setback lines, reservations, agreements, and other similar matters. The information provided herein should not be relied upon by the requesting party to confirm the existence / non-existence of facts contained herein.

Notes:

- Silver Beach Road maintained by P.B. Co. between Ave. 5 & Lake Shore Dr., as per R.92-800
 - Blue Heron Blvd. maintained by P.B. Co. between U.S. #1 & West City Limits of Riviera Bch., as per R.92-800. Also See R.92-1366. & TRANSFERRED TO STATE BYN IAS-TO USI/ERS AS R.99-793

NORTH CORP LIMITS OF RIVIERA BCH.

CMB 4-105 (00) also see R.68-1708D See Notes

PLAT BOOK 20-PAGE TO (4382)

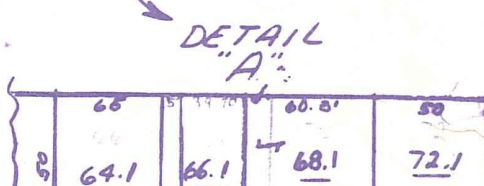
SEC 21 Gov't. Lot 4
 SEC 28 Gov't. Lot 1

RIVIERA BCH. BULKHEAD LINE (ORDINANCE NO. 452)

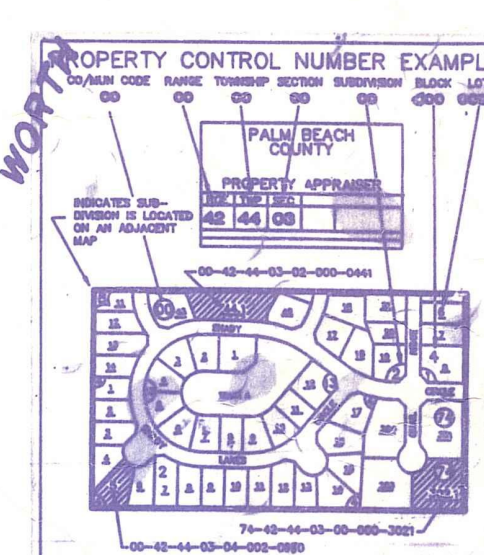
Gov't. Lot 1
 Gov't. Lot 2

- NE 01 RIVIERA SHORES PB25 - P147
- NE 02 B&G HOMES PB23 - P212
- SE 03 BARTON PARK PB24 - P39
- SW 04 BLUE HERON PARK PB20 - P87
- SW 05 " " PL 1 PB23 - P154
- SW 06 " " PL 2 PB23 - P172
- SW 07 " " PL 3 PB23 - P244
- SW 08 " " PL 4 PB24 - P22
- SW 09 " " PL 5 PB24 - P35
- NE 10 CHURCH CIRCLE PB27 - P154
- SE 11 COCONUT LODGE REVISED PL PB7 - P52
- SE 12 INLET SHORES PB13 - P8
- SE 13 " " PL 2 PB20 - P71
- SE 14 KIRKINGTON PARK PB14 - P4
- SE 15 LAKEVIEW PARK PB13 - P50
- SE 16 " " 2ND ADD PB20 - P80
- SE 17 LEE-WOOD PARK PB20 - P84
- NE 18 MIRAMAR PARK PB24 - P66
- NE 19 " " PB24 - P81
- NE 20 " " RE-PLAT ADD 1 PB25 - P245
- SE 21 NORTHVIEW REFL. BLK 4 PB11 - P5
- SE 22 NORTHVIEW REFL. BLK 4 PB22 - P35
- SE 23 " " PL 1, 2, 3, 4, 5 PB20 - P88
- SE 24 " " PL 1, 2, 3, 4, 5 PB20 - P87
- SW 25 PARK MANOR PL 1 PB26 - P175
- NW 26 " " PL 2 PB26 - P126
- NE 27 PLUMOSA PARK PB20 - P81
- SE 28 RANDOLPH PARK PB21 - P68
- SE 29 SANTRY'S SUB PB24 - P32
- NE 30 WHITE CAPS PB24 - P39
- SW 31 LEWIS TERM. REPL. PB27 - P40
- SE 32 COMM. FED. SITE PB28 - P219
- SE 33 RANDOLPH PARK PB27 - P7
- NW 34 PARK MANOR 3 PB27 - P133
- NW 35 " " 6 PB27 - P136
- NW 36 " " 4 PB27 - P219
- NE 37 RIVIERA SHOPPING CENT. PB27 - P203
- NE 38 FIRST NAT'L BANK OF RIVIERA PB28 - P9
- NW 39 PARK MANOR 5 PB28 - P78
- NE 40 HELDON CT PB28 - P63
- NE 41 RIVIERA SHORES REPL. PB28 - P70
- NE 42 LISA PARK PB28 - P74
- NE 43 SILVER BEACH VILLAGE CONDO PB28 - P74
- NE 44 BIRK DALE CONDO PB28 - P74
- SE 45 FIRST MARINE BANK REPL. PB29 - P75
- SE 46 " " " " PB29 - P75
- NE 48 WILSHIRE EAST CONDO PB29 - P70
- NE 49 KEY HAVEN CONDO PB30 - P45
- SE 50 BEACH MARINA PB30 - P45
- NE 51 " " " " PB30 - P45
- NE 52 LAKE HARBOUR COVE CONDO APTS PB30 - P153 (70)
- NE 53 WILSHIRE WEST CONDO PB30 - P153 (70)
- NE 54 WILSHIRE NORTH CONDO PB30 - P153 (70)
- NE 55 CONTINENTAL PLAZA PB30 - P153 (70)
- NE 56 EAST WIND CONDO PB30 - P153 (70)
- NE 57 WATERVIEW (1976) PB30 - P153 (70)
- NE 58 MIRAMAR WEST (1976) PB30 - P153 (70)
- NE 59 SOUTHERN BELL - RIVIERA BCH PB30 - P153 (70)
- NE 60 WATERSIDE PARK (1980) PB30 - P153 (70)
- NE 61 PLAT OF BOATLANDS - RIVIERA BCH PB30 - P153 (70)
- NE 62 LOUIS ZIMMERMAN PL. NO. 10 (1980) PB30 - P153 (70)
- NE 63 RIVIERA GARDEN - RIVIERA BCH PB30 - P153 (70)
- NE 64 " " " " PB30 - P153 (70)
- NE 65 LIGHT HARBOR MARINA (1980) PB30 - P153 (70)

NOTE: ALL OF SEC IN RIVIERA BEACH 56



NOT TO BE REPRODUCED IN ANY FORM EXCEPT BY EXPRESS WRITTEN CONSENT FROM THE PALM BEACH COUNTY PROPERTY APPRAISER



PALM BEACH COUNTY

N-15
 PROPERTY APPRAISER

Gov't. Lot 4
 POTTERS SURVEY

38	31	32	33	34	35	36	31
47	8	4	3	2	1	8	
12	7	9	10	11	12	7	
12	7	9	10	11	12	7	
24	19	20	21	22	23	24	19
23	20	22	27	28	29	23	20
26	21	32	33	34	35	26	21
1	2	3	4	5	6	1	2

RE	TWP	SEC	AERIAL
43	42	28	NO 68 97
SCALE 1"=200'			
DRAWN BY	KESHIAN		6-5-79
UPDATED	3/8/92		

NOTE: SEC OF THIS SUB IS IN SEC 33-42-43 Code to Sec 28

