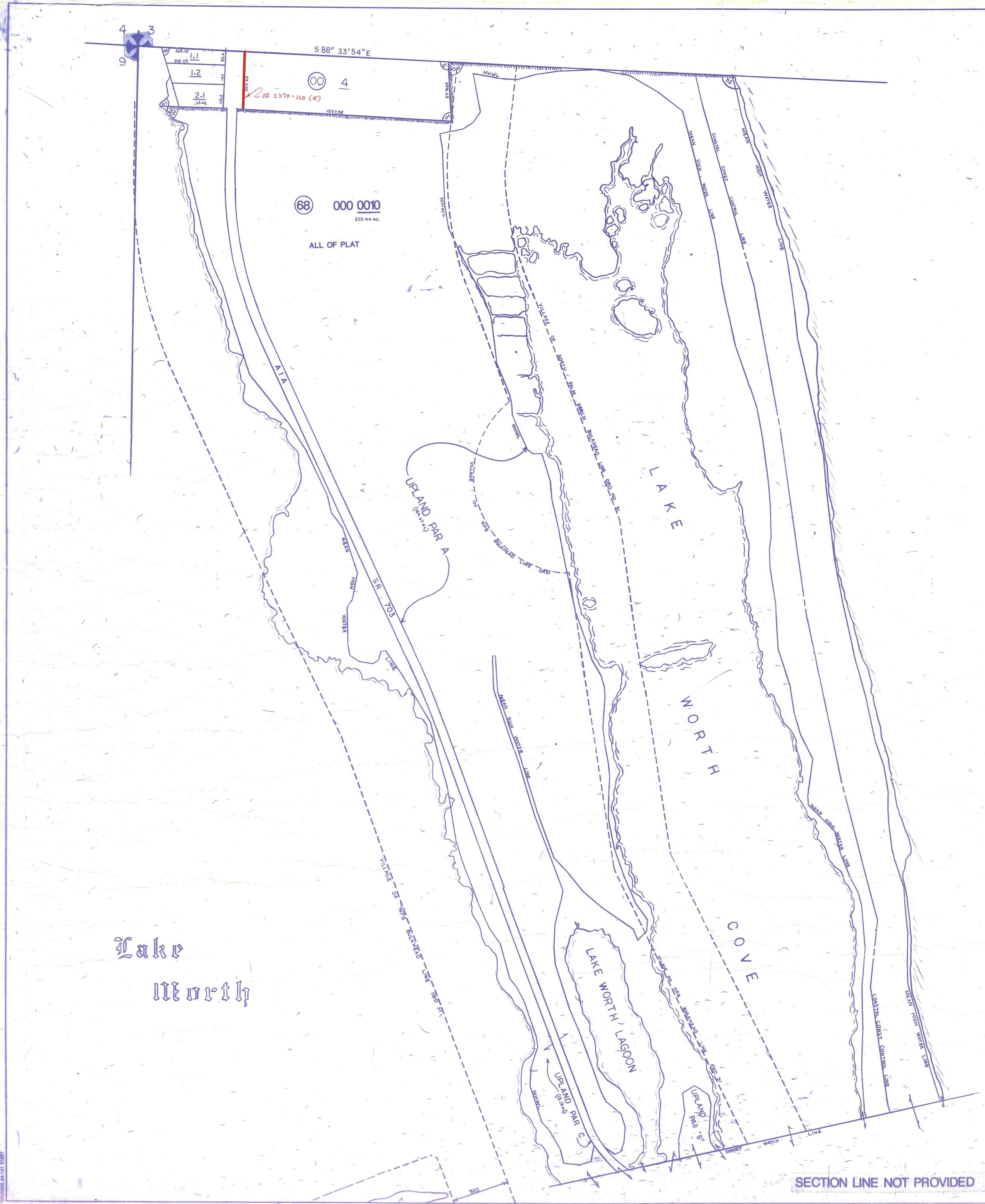
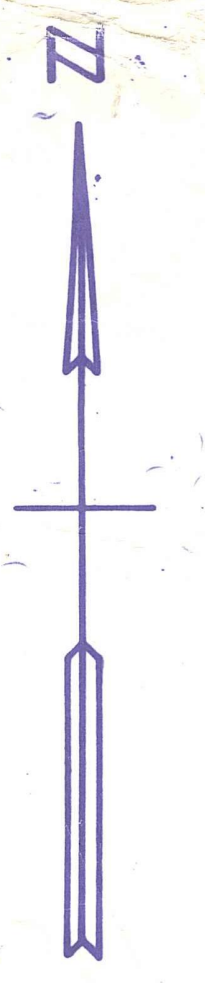


Palm Beach County (County) makes no representation or warranties whatsoever on the attached / enclosed information reflected herein pertaining to easements, rights-of-way, setback lines, reservations, agreements, and other similar matters. The information provided herein should not be relied upon by the requesting party to confirm the existence / non-existence of facts contained herein.

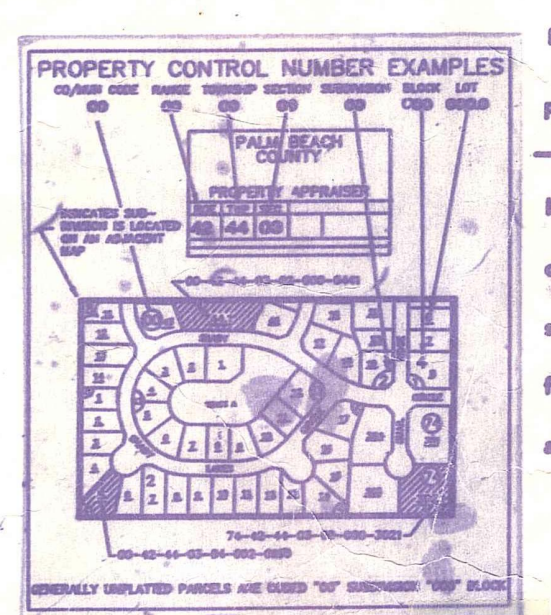


Atlantic
Ocean

NW 01 MARSHALL MORTON EST REPT PB24P102 (00)
02 JOHN D MACARTHUR ST PK PB56P157 (88)

Lake
Worth

NOTE:
NOT TO BE REPRODUCED IN ANY FORM EXCEPT BY EXPRESS WRITTEN CONSENT FROM THE PALM BEACH COUNTY PROPERTY APPRAISER
Information shown hereon is compiled from the best available sources and CANNOT be used for surveys or land transfers of any type.



B-10

PALM BEACH COUNTY
N-13
PROPERTY APPRAISER

36	31	32	33	34	35	36	31
1	6	5	4	3	2	1	6
12	7	8	9	10	11	12	7
13	18	17	18	15	14	13	18
24	19	20	21	22	23	24	19
25	30	29	28	27	26	25	30
36	31	32	33	34	35	36	31
1	6	5	4	3	2	1	6

RGE	TWP	SEC	AERIAL
43	42	10	NO 69-25
SCALE		1" = 200'	
DRAWN BY		T. WALKER 7/7/88	
UPDATED		7/7/88	

SECTION LINE NOT PROVIDED

DRAWING 44-141 31887