

**NOTES**

- OLD DIXIE HIGHWAY A-1-A maintained by REC within limits Town of Jupiter by Res. 92-800
- OLD DIXIE HIGHWAY FROM A-1-A TO N. CITY LIMITS OF JUPITER RE: RES. 92-800, 92-801, 92-802, 92-803, 92-804, 92-805, 92-806, 92-807, 92-808, 92-809, 92-810, 92-811, 92-812, 92-813, 92-814, 92-815, 92-816, 92-817, 92-818, 92-819, 92-820, 92-821, 92-822, 92-823, 92-824, 92-825, 92-826, 92-827, 92-828, 92-829, 92-830, 92-831, 92-832, 92-833, 92-834, 92-835, 92-836, 92-837, 92-838, 92-839, 92-840, 92-841, 92-842, 92-843, 92-844, 92-845, 92-846, 92-847, 92-848, 92-849, 92-850, 92-851, 92-852, 92-853, 92-854, 92-855, 92-856, 92-857, 92-858, 92-859, 92-860, 92-861, 92-862, 92-863, 92-864, 92-865, 92-866, 92-867, 92-868, 92-869, 92-870, 92-871, 92-872, 92-873, 92-874, 92-875, 92-876, 92-877, 92-878, 92-879, 92-880, 92-881, 92-882, 92-883, 92-884, 92-885, 92-886, 92-887, 92-888, 92-889, 92-890, 92-891, 92-892, 92-893, 92-894, 92-895, 92-896, 92-897, 92-898, 92-899, 92-900

- NE 01 JUPITER INLET BCH COLONY PB24-P139
  - SW 02 CABOT SUB OF GOV'T LOT 4 PBI-P683
  - SE 03 JUPITER TOWN OF PBI-P656
  - SE 04 SUNI SANDS REPL OF JUPITER INLET EST. PB23-P65
  - NW 05 LOCKMAN'S ADD. PB 5-PG 40
  - NW 06 POTTER SURVEY OF GOV'T LOT 2 PBI-PG 12
  - SE 07 JUPITER INLET EST. PB16-PG 25
  - NW 08 RIVERSIDE DRIVE PARK PB 27-PG 209
  - NW 09 RIVERSIDE DRIVE PARK SEC. A PB 27-PG 223
  - 10 JUPITER INLET BCH COLONY SUB OF LOT A PB28-PG75 32 SEC 32
  - NW11 KURTZ INDUSTRIAL PARK-UNREC AM91
  - NE 12 REGENCY CONDOMINIUM APTS. 60 SEC 32
  - 13 JUPITER INLET CONDO'S NO. 1,2,3,4,5,6
  - NE 14 SEAMIST CONDO. APTS., A CONDO. (1978)
  - W/15 JUPITER COVE CONDO (phase I) (1980)
  - NW16 PINES OF JUPITER/TEQUESTA CONDO (90)
  - 17 COPPOLA VILLAS PH I (1981) TWH5
  - NE 18 JIB CLUB CONDO (1982)
  - SE 19 PARKWAY PLAZA CONDO (1982)
- NOTE:**
- JUPITER INLET BCH COLONY E 1/2 32
  - TEQUESTA IN N.E. 1/4 60
  - REMAINDER IN JUPITER 50
  - PART OF SE 1/4 IN COUNTY 00
- SW 20 BAHAMA CONDO (1982)
  - SE 21 BERMUDA CONDO (1982)
  - SW 22 JAMAICA CONDO (1982)
  - SW 23 ANTIGUA CONDO (1983)
  - SW 24 ELEUTHERA CONDO (1983)
  - SE 25 JUPITER INLET COVE CONDO (1985)
  - SE 26 OMITTED/NEVER USED
  - SE 27 SANDY OAKS 1987 PB52-P142
  - SW 28 JUPITER HARBOUR (1988) PB56-P5
  - SW 29 JUPITER HARBOUR MARINA CONDO (1988)
  - NW 30 GROSSINGER COMMERCIAL (1992) PB68-P98

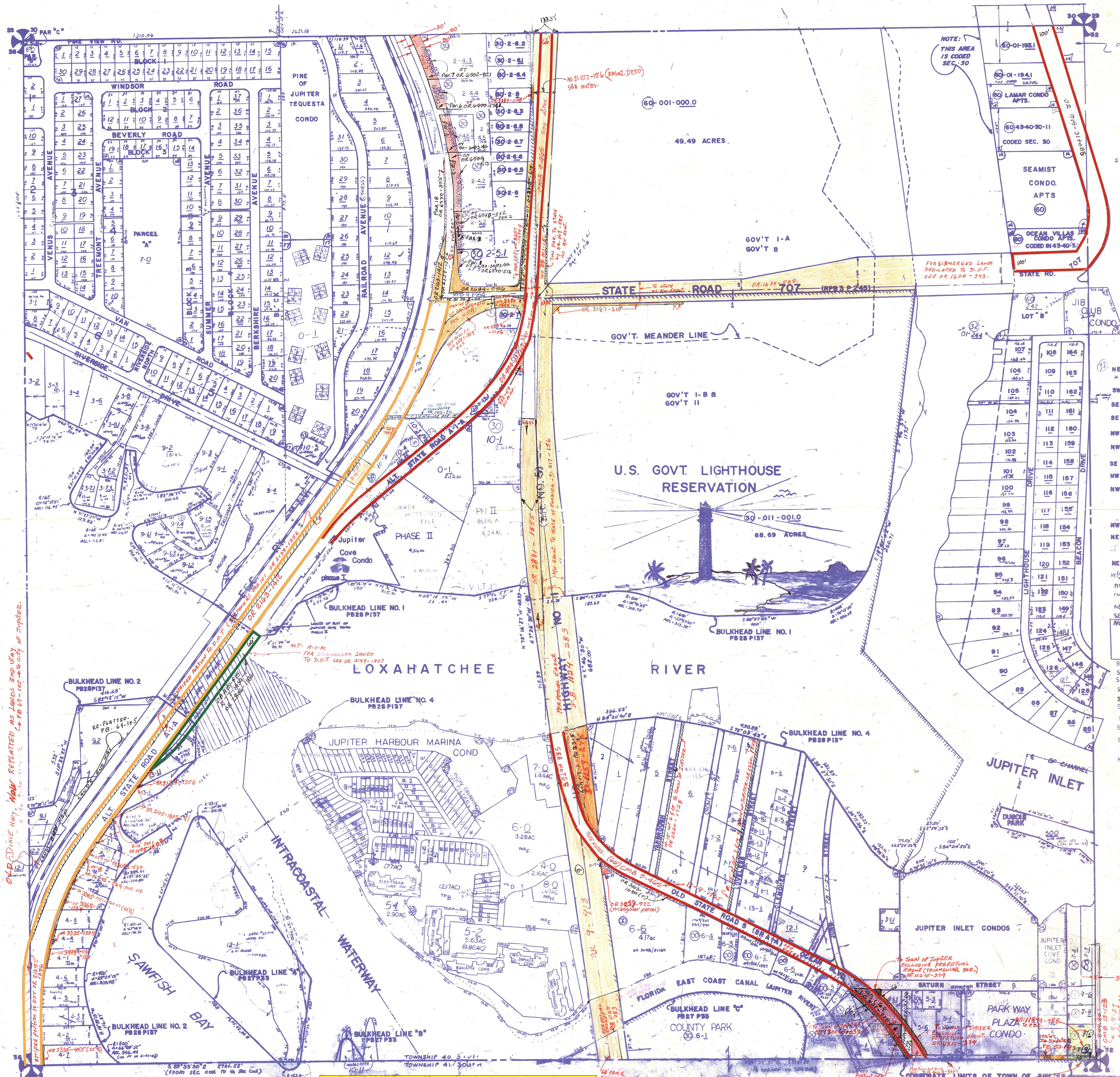
NOTE:  
NOT TO BE REPRODUCED IN ANY FORM EXCEPT BY EXPRESS WRITTEN CONSENT FROM THE PALM BEACH COUNTY PROPERTY APPRAISER

Information shown herein is compiled from the best available sources and CANNOT be used for surveys or land transfers of any type.

**PALM BEACH COUNTY**  
N-5  
PROPERTY APPRAISER

RGE	TWP	SEC	AERIAL
43	40	31	N088-141
SCALE 1" = 200'			
DRAWN BY OLLIS & KESHIAN			
UPDATED			

**Palm Beach County (County) makes no representation or warranties whatsoever on the attached / enclosed information reflected herein pertaining to easements, rights-of-way, setback lines, reservations, agreements, and other similar matters. The information provided herein should not be relied upon by the requesting party to confirm the existence / non-existence of facts contained herein.**



OLD DIXIE HWY. Now REPLANTED AS LANDS END OF HWY. OF JUPITER.

RDS-3-Maintenance Map for Public Rd

43-41-06

PB 1-56 SHOW 25'