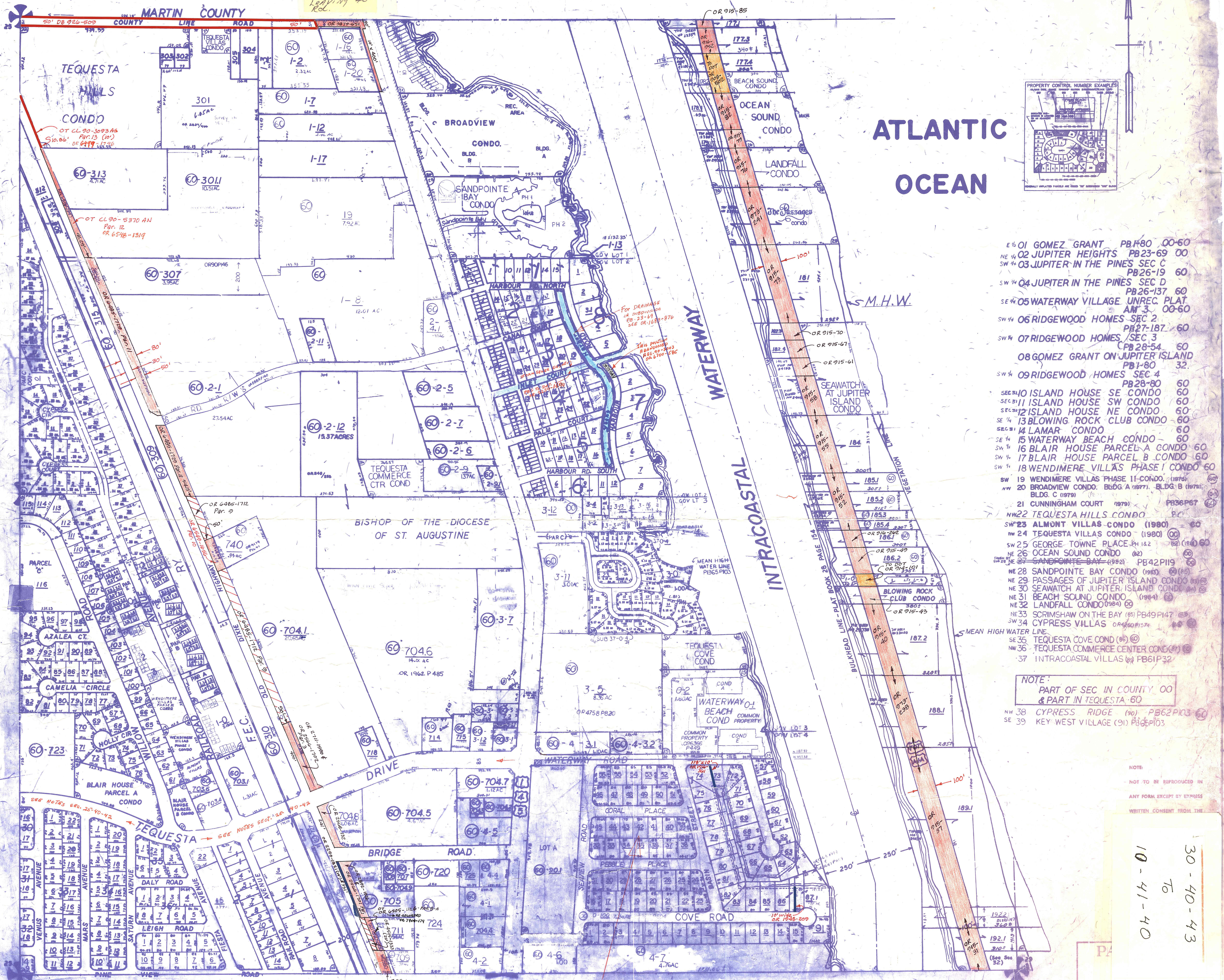
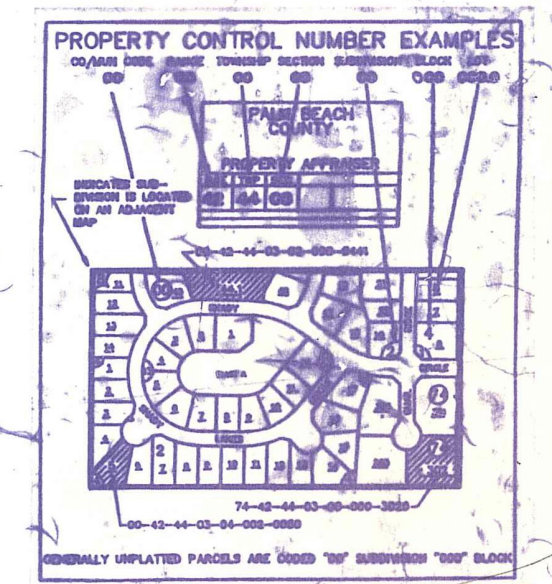


Nothing here -
EXXON owns
5187.26' of water
7227.26'
Leaving 40'
loc.



ATLANTIC OCEAN



- E 1/4 01 GOMEZ GRANT PB#80 00-60
- NE 1/4 02 JUPITER HEIGHTS PB23-69 00
- SW 1/4 03 JUPITER IN THE PINES SEC C PB26-19 60
- SW 1/4 04 JUPITER IN THE PINES SEC D PB26-137 60
- SE 1/4 05 WATERWAY VILLAGE UNREC. PLAT AM-3 00-60
- SW 1/4 06 RIDGEWOOD HOMES SEC 2 PB27-187 60
- SW 1/4 07 RIDGEWOOD HOMES SEC 3 CP#28-54 60
- 08 GOMEZ GRANT ON JUPITER ISLAND PB1-80 32
- SW 1/4 09 RIDGEWOOD HOMES SEC 4 PB28-80 60
- SEC 10 ISLAND HOUSE SE CONDO 60
- SEC 11 ISLAND HOUSE SW CONDO 60
- SEC 12 ISLAND HOUSE NE CONDO 60
- SE 1/4 13 BLOWING ROCK CLUB CONDO 60
- SEC 14 LAMAR CONDO 60
- SE 1/4 15 WATERWAY BEACH CONDO 60
- SW 1/4 16 BLAIR HOUSE PARCEL A CONDO 60
- SW 1/4 17 BLAIR HOUSE PARCEL B CONDO 60
- SW 1/4 18 WENDIMERE VILLAS PHASE I CONDO 60
- SW 1/4 19 WENDIMERE VILLAS PHASE II-CONDO. (1975)
- NW 20 BROADVIEW CONDO. BLDG. A (1977), BLDG. B (1975), BLDG. C (1975)
- 21 CUNNINGHAM COURT (1979) PB36P67 60
- NW 22 TEQUESTA HILLS CONDO 60
- SW 23 ALMONT VILLAS CONDO (1980) 60
- NW 24 TEQUESTA VILLAS CONDO (1980) 60
- SW 25 GEORGE TOWNE PLACE PH 182 (1981) 60
- NE 26 OCEAN SOUND CONDO (82)
- NE 27 SANDPOINTE BAY (1982) PB42P19 60
- NE 28 SANDPOINTE BAY CONDO (1985) 60
- NE 29 PASSAGES OF JUPITER ISLAND CONDO (85)
- NE 30 SEAWATCH AT JUPITER ISLAND CONDO (85)
- NE 31 BEACH SOUND CONDO (1984) 60
- NE 32 LANDFALL CONDO (1984) 60
- NE 33 SCRIMSHAW ON THE BAY (85) PB49P147 60
- SW 34 CYPRESS VILLAS OR#60P157 60
- SE 35 TEQUESTA COVE CONDO (85) 60
- NW 36 TEQUESTA COMMERCE CENTER CONDO (87) 60
- 37 INTRACOASTAL VILLAS (87) PB61P32 60

NOTE:
PART OF SEC IN COUNTY 00
& PART IN TEQUESTA-60

NOTE:
NOT TO BE REPRODUCED IN
ANY FORM EXCEPT BY EXPRESS
WRITTEN CONSENT FROM THE

Palm Beach County (County) makes no representation or warranties whatsoever on the attached / enclosed information reflected herein pertaining to easements, rights-of-way, setback lines, reservations, agreements, and other similar matters. The information provided herein should not be relied upon by the requesting party to confirm the existence / non-existence of facts contained herein.

Waterway Village (AM-3) all R/W's 60' wide
Street improvements to P.B. Co. OR 1900-043
Reconveyed to Waterway Village homeowners'
Assoc. OR 2815-004. (SEE ST. IMPROVEMENT FILE)
Except N. 30' of Waterway Road & Cove Rd.
South. P.B. Co. never had any interest in
either of these two streets.

30-40-43
to
10-41-40

36	31	32	33	34	35	36	37	38	39
1	2	3	4	5	6	7	8	9	10
11	12	13	14	15	16	17	18	19	20
21	22	23	24	25	26	27	28	29	30