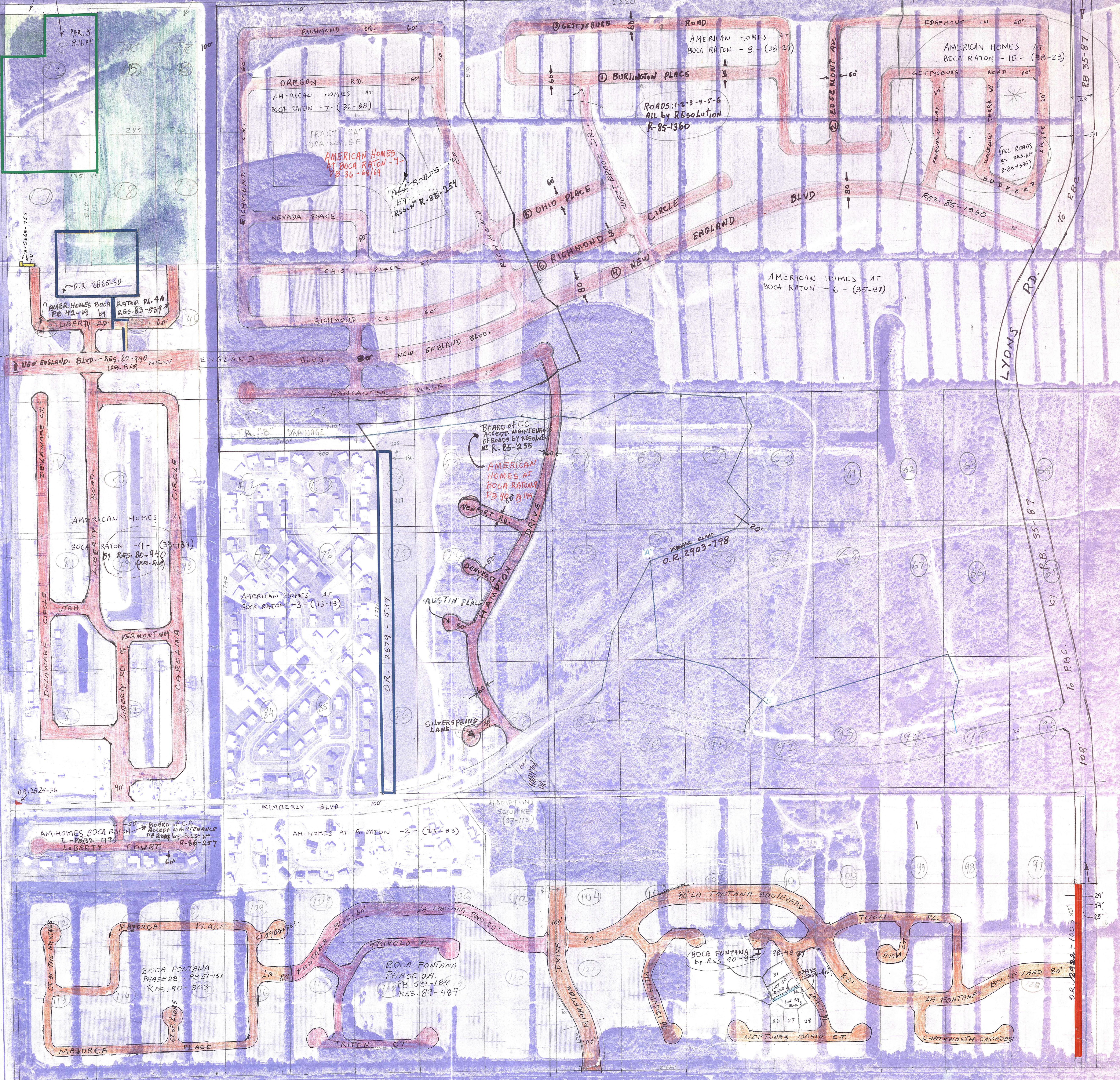


American Homes Park

B3615
413
PAR. 2
16.52 AC
B3420-1526

L-42 CANAL



* Agreement Between Developer - Boca Fontana Management Inc. & County HIS THE UTILITY TO PROVIDE WATER & SEWER FACILITIES FOR AMERICAN HOMES AT BOCA RATON PLAT 10 IN TRACTS 1, 2, 3 & 30, 31 & 32 OF B.L.E. 74 AS PER BOOKS 514 FILED IN MISCELLANY

Palm Beach County (County) makes no representation or warranties whatsoever on the attached / enclosed information reflected herein pertaining to easements, rights-of-way, setback lines, reservations, agreements, and other similar matters. The information provided herein should not be relied upon by the requesting party to confirm the existence / non-existence of facts contained herein.

NOTE:
NOT TO BE REPRODUCED
ANY FORM EXCEPT BY EASEMENT
WRITTEN CONSENT FROM THE
PALM BEACH COUNTY
PROPERTY APPRAISER
Information shown hereon
is based on the best available
and CANNOT be used for
land transfers of any type.

PALM BEACH COUNTY
5.49
DAVID L. REID
PROPERTY APPRAISER

RGE	TWP	SEC
42	47	7

SCALE: 1"=200'
DRAWN BY:
UPDATED:

PLIGHT DATE: JANUARY, 1978