



Palm Beach County (County) makes no representation or warranties whatsoever on the attached / enclosed information reflected herein pertaining to easements, rights-of-way, setback lines, reservations, agreements, and other similar matters. The information provided herein should not be relied upon by the requesting party to confirm the existence / non-existence of facts contained herein.

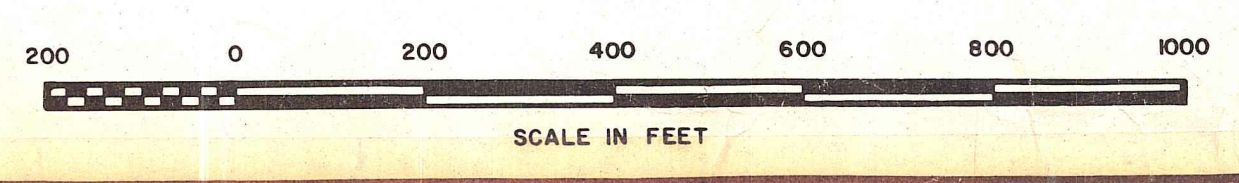
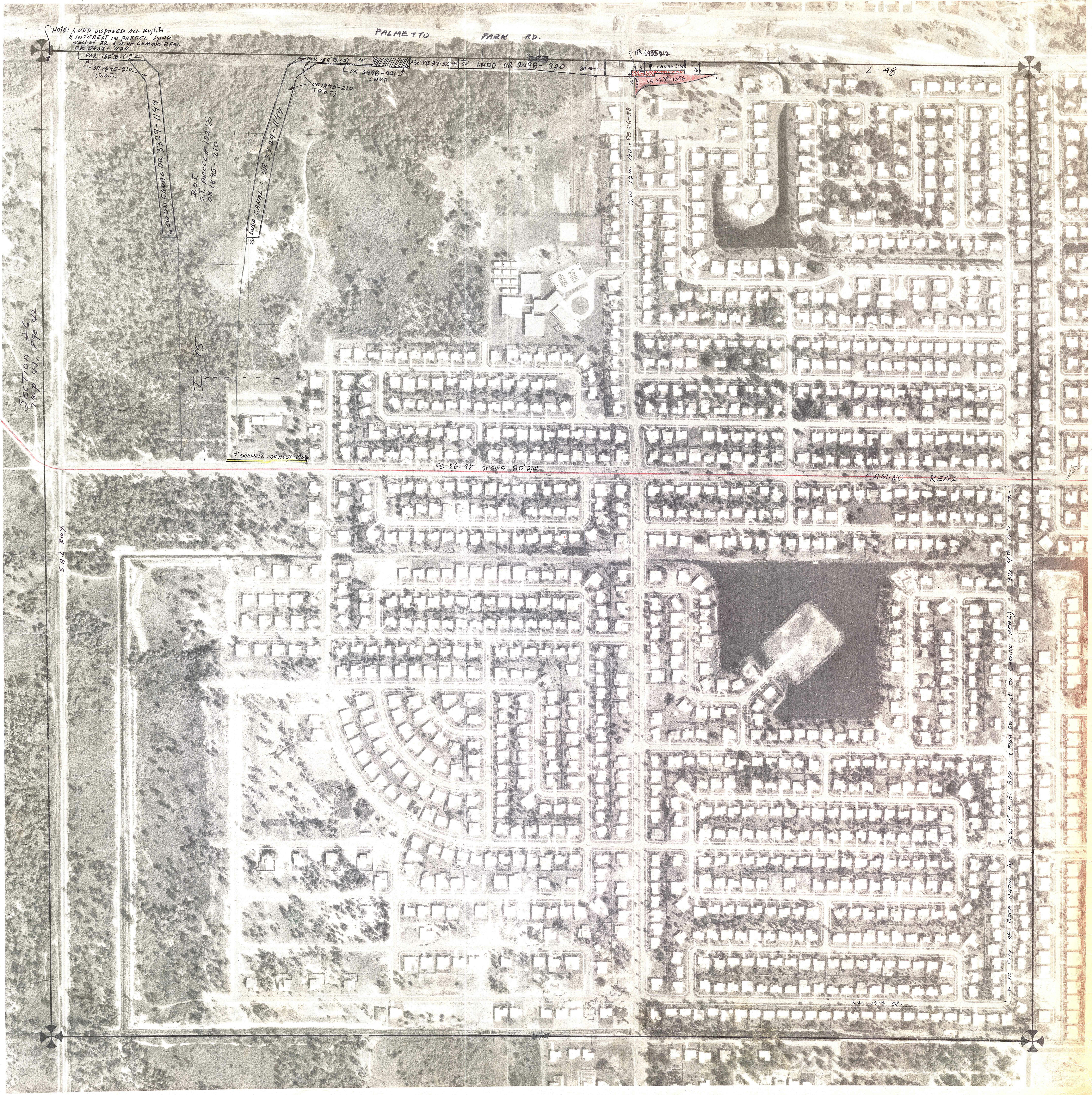
66 FT. R/W-BOOTS RD
PER DB 668-116
(NEW WEST CAMINO REAL) - FROM SEC 30
TWP 47, R29 43

For road R/W
ABANDONMENT
WITHIN THIS
SECTION - See
R74-565

25-47-42
to
30-47-42

PALM BEACH COUNTY
S. 53
DAVID L. REID
County Assessor

RGE	TWP	SEC	AERIAL
42	47	25	No. 624
SCALE			1"=200'



Aerial Photo Date - 10-23-70

NOTE: LWDD DISPOSED ALL RIGHTS & INTEREST IN PARCEL LYING WEST OF RR. 1/2 M.P. OF CAMINO REAL OR 5469 - 1/20
PAR 182 B.C. (1)
OR 1845-210 (D.O.T.)
LWDD CANAL OR 3329-1144
D.O.T. SPACE # 184 (3)
OR 1845-210
LWDD CANAL OR 3329-1144
D.O.T.
OR 2448-921
LWDD
OR 1845-210 (D.O.T.)
OR 455-212
CANAL LWB
OR 6237-1306
SW 1/4 12th AV. PB 26-38
L-18
SECTION 27
TWP 47, R29 42
S. 9 L Hwy
7' SIDEWALK OR 1163-408
PB 26-98 SHOWS 80' R/W
CAMINO REAL
SW 1/4 14th ST.
ECS. OF R. 81-809 (FROM SW 1/4 14th ST. TO CAMINO REAL) 94.9m R/W
TO CITY OF BOCA RATON