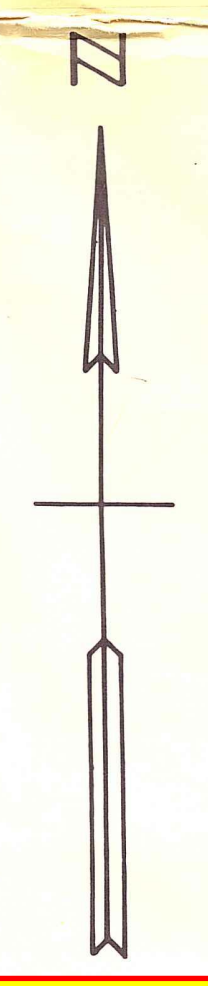


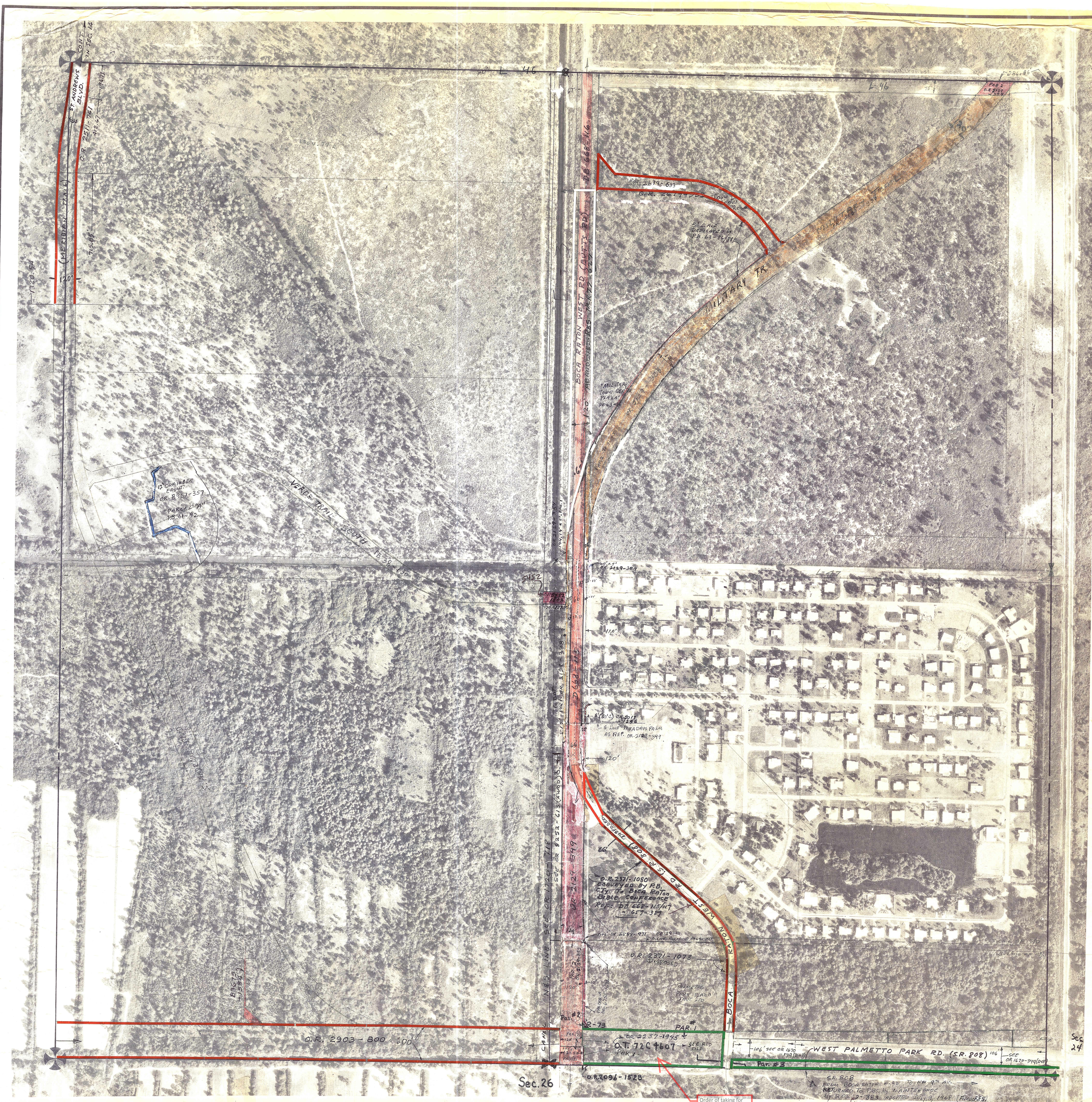
**Palm Beach County (County) makes no representation or warranties whatsoever on the attached / enclosed information reflected herein pertaining to easements, rights-of-way, setback lines, reservations, agreements, and other similar matters. The information provided herein should not be relied upon by the requesting party to confirm the existence / non-existence of facts contained herein.**



NOTE:  
 NOT TO BE REPRODUCED IN ANY FORM EXCEPT BY EXPRESS WRITTEN CONSENT FROM THE PALM BEACH COUNTY ASSESSOR.  
 Information shown hereon is compiled from the best available sources and CANNOT be used for surveys or land transfers of any type.

**PALM BEACH COUNTY**  
 553  
**DAVID L. REID**  
 County Assessor

RGE	TWP	SEC	AERIAL
42	47	23	No. 580



BROCKWAY, OWEN & ANDERSON ENGINEERS, INC.  
 ENGINEERS PLANNERS SURVEYORS  
 WEST PALM BEACH, FLORIDA



Order of taking for case #72C4607 Book 2115 Page 684

Aerial Photo Date - 10-23-70

SCALE 1"=200'