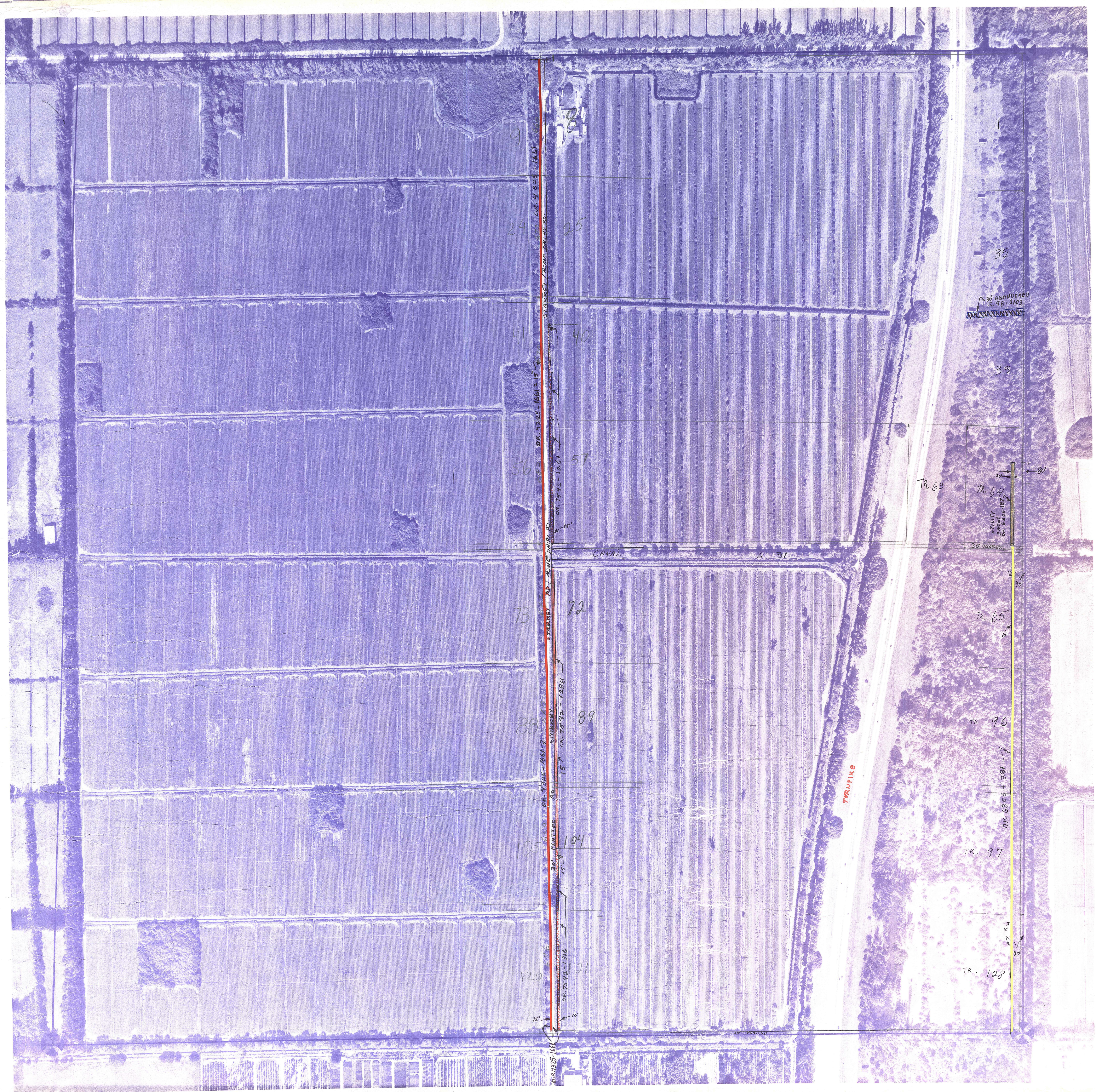


Palm Beach County (County) makes no representation or warranties whatsoever on the attached / enclosed information reflected herein pertaining to easements, rights-of-way, setback lines, reservations, agreements, and other similar matters. The information provided herein should not be relied upon by the requesting party to confirm the existence / non-existence of facts contained herein.



NOTE:
 NOT TO BE REPRODUCED IN ANY FORM EXCEPT BY EXPRESS WRITTEN CONSENT FROM THE PALM BEACH COUNTY PROPERTY APPRAISER
 Information shown herein is compiled from the best available sources and CANNOT be used for surveys or land transfers of any type.

P.B.C. CO. PL. #1
 PB. 2-26/88 (7883)

PALM BEACH COUNTY
5.43
 PROPERTY APPRAISER

RCE	TRP	NO	DATE
42	46	9	PAGE 53
SCALE: 1/2"=100'			
DRAWN BY			
UPDATED			



FLIGHT DATE: JANUARY 10, 1981