



Palm Beach County (County) makes no representation or warranties whatsoever on the attached / enclosed information reflected herein pertaining to easements, rights-of-way, setback lines, reservations, agreements, and other similar matters. The information provided herein should not be relied upon by the requesting party to confirm the existence / non-existence of facts contained herein.

NOTE: PALM BEACH FARMS PL NO. 3 IS CODED 05' IN SEC 27 43-72 AND IS IN THE COUNTY -00

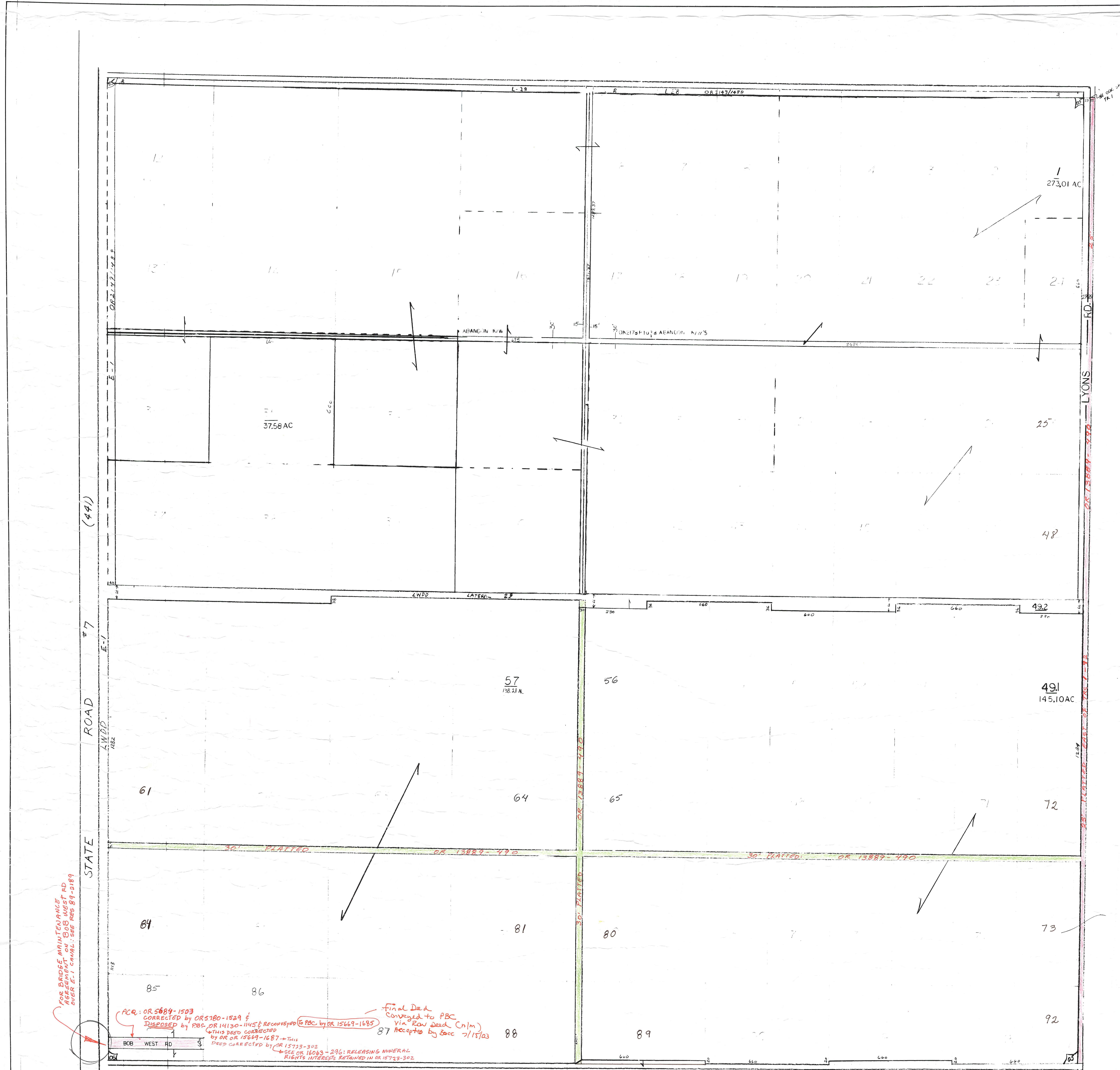
6-46-42
To
12-46-42

sources and CANNOT be used for surveys or land transfers of any type.

K-33

PALM BEACH COUNTY
GARY R. NIKOLITS
PROPERTY APPRAISER

RGE	TWP	SEC	AERIAL
42	46	06	NO 60-12
SCALE 1" = 200'		BLK 62	
DRAWN BY		OAKS 11/6/72	
UPDATED		10/2/61 SONS	



FOR BRIDGE MAINTENANCE
OVER E-1 CANAL; SEE RES 89-2189

ACR: OR 5084-1503
CORRECTED BY OR 5180-1529 &
DISPOSED BY PBC OR 14130-1145 RECOVERED TO PBC BY OR 15669-1695
THIS DEED CORRECTED BY OR OR 15669-1687 - THIS DEED CORRECTED BY OR 15723-302
SEE OR 16063-296; RELEASING MINERAL RIGHTS INTERESTS RETAINED IN OR 15723-302

Final Deed
Conveyed to PBC
Via Raw Deal C/m
87 accepted by Sacc 7/15/03