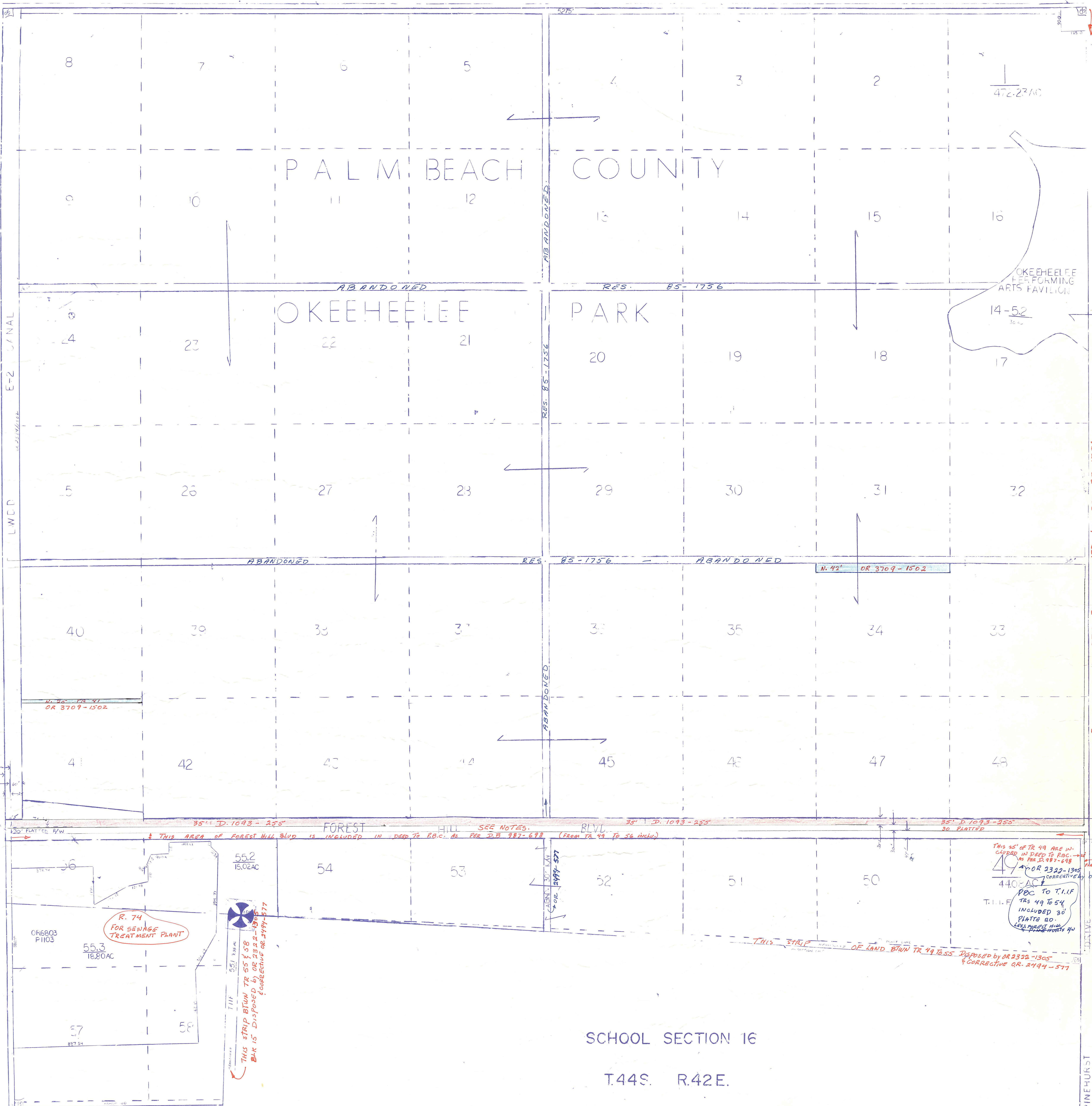


**Palm Beach County (County) makes no representation or warranties whatsoever on the attached / enclosed information reflected herein pertaining to easements, rights-of-way, setback lines, reservations, agreements, and other similar matters. The information provided herein should not be relied upon by the requesting party to confirm the existence / non-existence of facts contained herein.**



NOTE: HB FARMS CO. PL 3, P. 52, P. 45-54  
 COED. 42-43-67-10  
 BLOCK 15 COED. (6)  
 - FOR BLOCK 15: OKEEHEELEE PARK: R. 74  
 - FOR BLANKET UTILITY EASMT. FOR FRL IN OKEEHEELEE PARK (BLKS 12, 15, 14. SEE OR 4568-447  
 - FOREST HILL BLVD:  
 ① B.C.C. INDICATED AGREEMENT WITH PROPOSED TRANSFER OF JURISDICTION AND CLASSIFICATION OF FOREST HILL BLVD FROM STATE TO COUNTY (287 IS M.I.L.D.) Sect. 7 to 12 by R. 87-1549.  
 ② B.C.C. REQUESTS THE TRANSFER OF JURISDICTION FROM COUNTY TO STATE OF FOREST HILL BLVD (BANK TO STATE) FROM G.R.7 TO OLIVE AVE by RES. 93-1643

NOTE:  
 NOT TO BE REPRODUCED IN ANY FORM EXCEPT BY EXPRESS WRITTEN CONSENT FROM THE PALM BEACH COUNTY ASSESSOR.  
 Information shown hereon is compiled from the best available sources and CANNOT be used for surveys or transfers of any type.

SCHOOL SECTION 16  
 T.44S. R.42E.

PALM BEACH COUNTY				
GARY R. NIKOLITS				
PROPERTY APPRAISER				
RGE	TWP	SEC	BLK	AERIAL
42	44	9	15	NOE2-65A
SCALE		1" = 200'		
DRAWN BY		C.L.S.		
UPDATED		6-11-72 LJS		