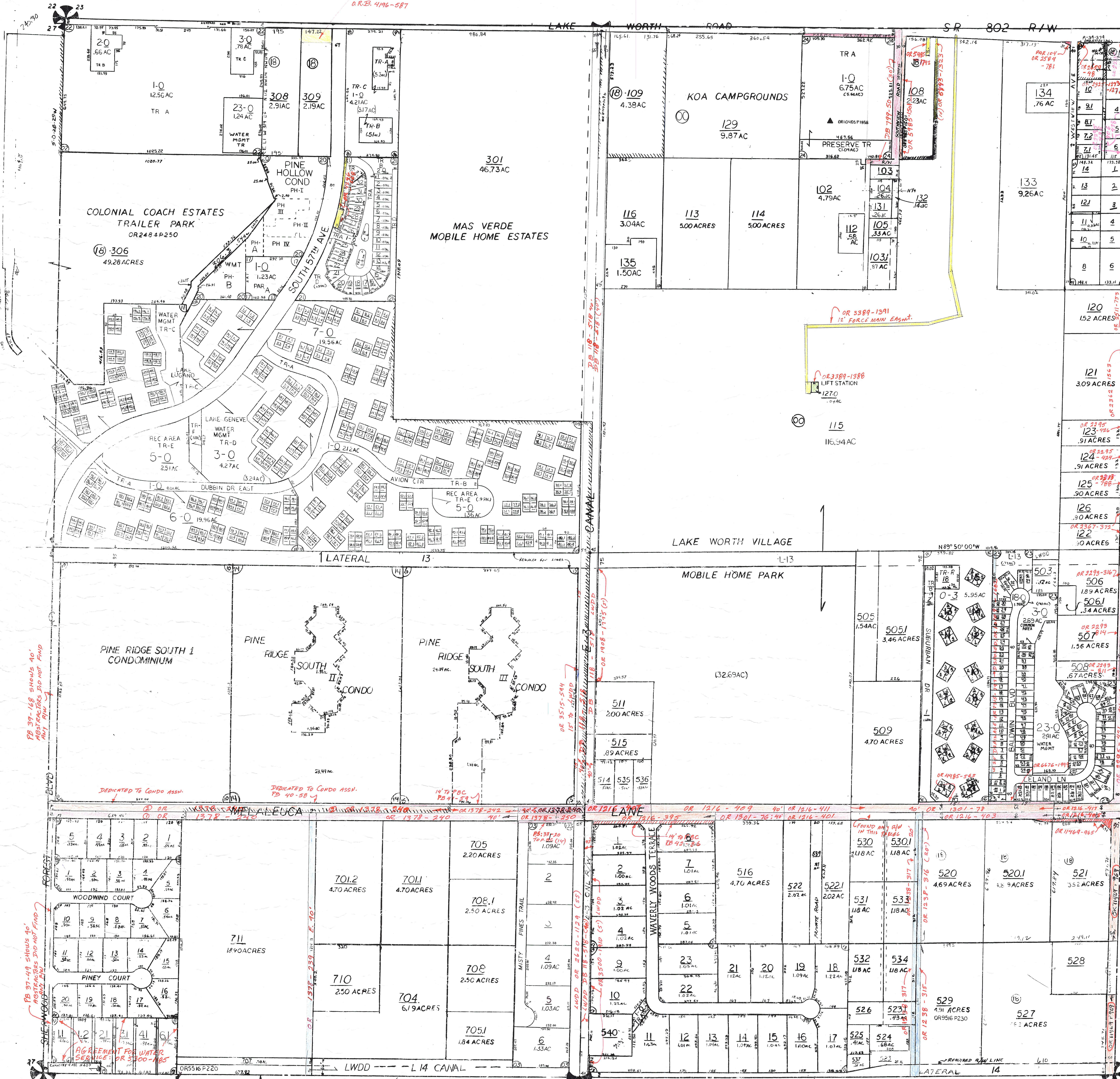


WATER DISTRIBUTION & SEWAGE COLLECTION FACILITIES
O.R.B. 4/96-587

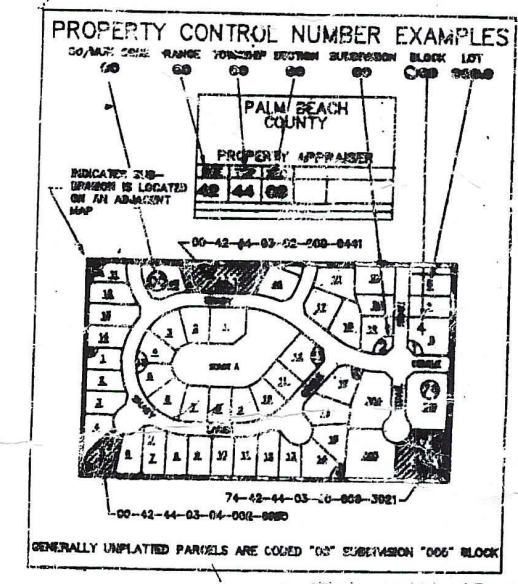


Palm Beach County (County) makes no representation or warranties whatsoever on the attached / enclosed information reflected herein pertaining to easements, rights-of-way, setback lines, reservations, agreements, and other similar matters. The information provided herein should not be relied upon by the requesting party to confirm the existence / non-existence of facts contained herein.

- NE 01 FLORWOOD SUB PB23 P13 00
- NE 02 NORWOOD SUB PB21 P9 00 & 18
- SW 03 MISTY PINES (1978) PB33P20
- SW 04 PINE COUNTRY (1960) PR 36 P129
- SW 05 SHERWOOD FOREST (1981) PB 37 P49
- SW 06 PINE RIDGE SOUTH (1961) PB 39 P100
- SW 07 FINERIDGE SOUTH II (81) PB 40 P88
- SW 08 SHERWOOD LAKES (81) PB 40 P105
- SW 09 FINERIDGE SOUTH III (81) PB 40 P105
- SW 10 PINE RIDGE SOUTH CONDO (1981)
- SW 11 SHERWOOD LAKES PL NO2 PB 41 P124
- SE 12 WAVERLY WOODS PL NO1 (82) PB 42 P16
- SE 13 WAVERLY WOODS PL NO2 (82) PB 42 P18
- SW 14 PINE RIDGE SOUTH II CONDO (82)
- SW 15 PINE RIDGE SOUTH III CONDO (82)
- SE 16 SUBURBAN PINES PB 48 P137
- SW 17 PINE HOLLOW PB 49 P62
- NW 18 5700 PROFESSIONAL PARK PB 50 P127
- SW 19 SUNLAND ESTS (1987) PB 55 P73
- NW 20 PINE HOLLOW COND (88, 89, 90)
- NW 21 PINE HOLLOW COND (87) PB 77 P84
- SE 23 GREENACRES TARGET (98) PB 79 P16
- SE 23 SOUTHWIND (98) PB 81 P183
- NE 24 BRAMAN HONDA (99) PB 82 P15

PARCEL RESTRICTED
PER: UNITY OF TITLE
PART OF SECTION IN GREENACRES-18
REMAINDER IS IN THE COUNTY-00

NOTE:
NOT TO BE REPRODUCED IN
ANY FORM EXCEPT BY EXPRESS
WRITTEN CONSENT FROM THE
PALM BEACH COUNTY
PROPERTY APPRAISER
Information shown hereon is
compiled from the best available
sources and CANOT be used
for surveys or land transfers of
any type.



PALM BEACH COUNTY
GARY R. NIKOLITS
PROPERTY APPRAISER

31	32	33	34	35	36	37	38	39	40
1	2	3	4	5	6	7	8	9	10
11	12	13	14	15	16	17	18	19	20
21	22	23	24	25	26	27	28	29	30
31	32	33	34	35	36	37	38	39	40

RGE TWP SEC AERIAL
42 44 26 NO 64-78
SCALE 1"=200'
DRAWN BY OLLIS G-24-78
UPDATED

PA 39-148 shows 40' easements and not find any R/W

PA 37-49 shows 40' easements and not find any R/W

DEDICATED TO CONDO ASSN. TO 40-58

DEDICATED TO CONDO ASSN. TO 40-58

14' TO PBC PD 91-58

OR 3515-544 15' TO BOARD

OR 1988-1973 (C)

OR 1216-409

OR 1216-411

OR 1216-403

OR 1216-403

OR 1216-411

OR 1216-411

OR 1216-411

OR 1216-411

OR 1216-411

OR 1216-411

CORPORATE LIMITS OF TOWN OF GREENACRES

Notes:
1. W 1/2 E 3/4
2. W 1/2 E 1/2
3. E 1/2 E 1/2