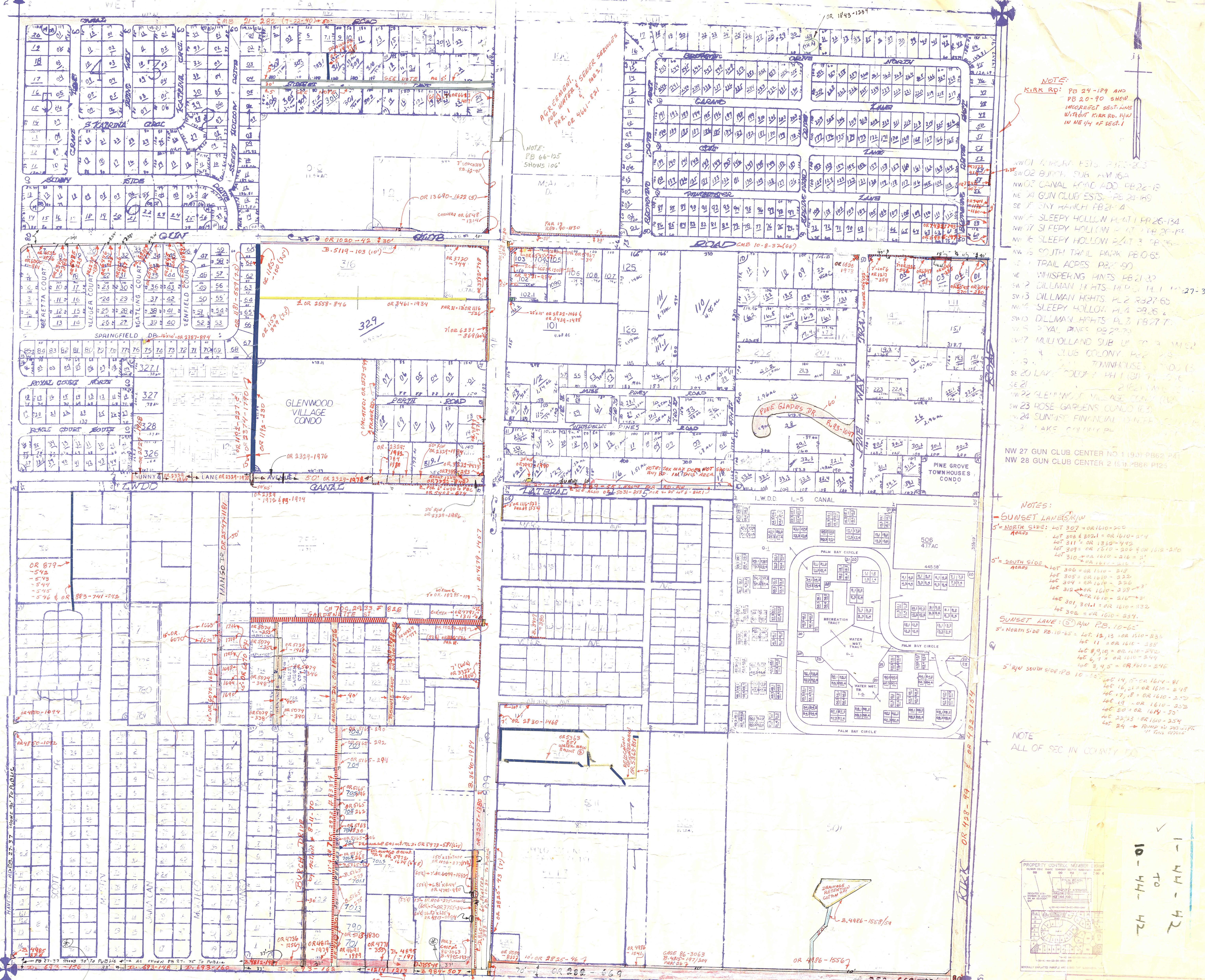


36

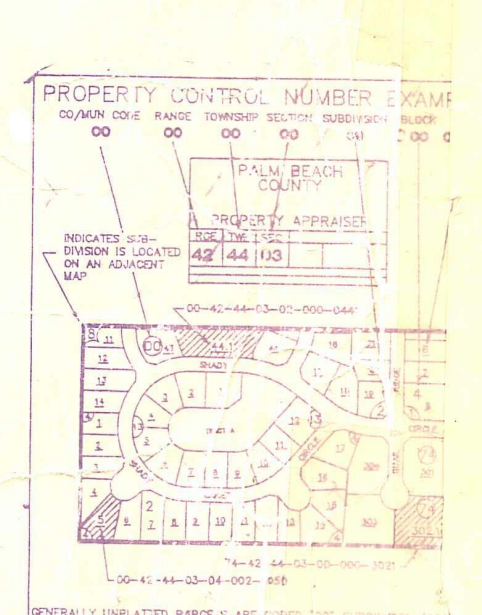


NOTE:
 KIRK RD: PB 24-129 AND
 PB 20-90 SHOW
 INCORRECT SECT. LINE
 WITHIN KIRK RD. RUN
 IN NE 1/4 OF SECT. 1

NOTE:
 NW01 GUN CLUB ESTS. PB 22-13
 SW02 BIRTH SUB. AM 16A
 NW02 CANAL ACAD. ADD. PB 22-13
 NE 1/4 GUN CLUB ESTS. PB 24-129
 SE 1/4 SKY HATCH PB 21-4
 NW 1/4 SLEEPY HOLLOW PLAT 1 PB 26-134
 NW 1/4 SLEEPY HOLLOW PLAT 1 PB 26-134
 NW 1/4 SLEEPY HOLLOW PLAT 3 PB 26-134
 NW 1/4 SOUTH TRAIL PARK PB 0-55
 SE 1/4 TRAIL ACRES PB 27-90
 NE 1/4 WHISPERING WINDS PB 21-37
 SW 1/4 DILLMAN HTS. PLAT 1 PL 1 27-37
 SW 1/4 DILLMAN HTS. PL 2 PB 27-65
 NW 1/4 SLEEPY HOLLOW PL 4 PB 26-134
 SW 1/4 DILLMAN HTS. PL 3 PB 27-65
 NW 1/4 PALM PINES PB 27-35
 NW 1/4 MULHOLLAND SUB. U.S. 30
 SE 1/4 CLUB COLONY PB 27-35
 SE 1/4 TOWNHOUSES PB 0-55
 SE 1/4 LAKELAND PLAT 1 PB 1-37
 SE 1/4 FLEMING VILLAGE PLAT 1
 SW 1/4 ROSE GARDENS CONDO 1-5
 SW 1/4 SUNSHINE FINANCIAL CENTER
 SW 1/4 LAKE CANYON PL
 NW 27 GUN CLUB CENTER NO. 1 (9-1) PB 62-241
 NW 28 GUN CLUB CENTER 2 (6-1) PB 62-241

NOTES:
 - SUNSET LANE/RW
 5' NORTH SIDE: LOT 307 - OR 1610-200
 ACRES
 LOT 308 & 309 - OR 1610-204
 LOT 311 - OR 1340-445
 LOT 305 - OR 1610-206 & OR 1610-206
 LOT 310 - OR 1610-218 & 219
 5' SOUTH SIDE
 ACRES
 LOT 306 - OR 1610-218
 LOT 305 - OR 1610-222
 LOT 304 - OR 1610-226
 LOT 302 - OR 1610-228 & 229
 LOT 310 - OR 1610-218 & 219
 LOT 301, 3011 - OR 1610-232
 LOT 308 - OR 1610-234
 SUNSET LANE - 5' RW PB 10-65
 5' NORTH SIDE PB 10-65: LOT 12, 13 - OR 1610-236
 LOT 11 - OR 1610-238
 LOT 8, 9, 10 - OR 1610-240
 LOT 6, 7 - OR 1610-244
 LOT 3, 4, 5 - OR 1610-246
 5' RW SOUTH SIDE PB 10-65:
 LOT 14, 15 - OR 1610-248
 LOT 16, 17 - OR 1610-248
 LOT 18, 19 - OR 1610-250
 LOT 20 - OR 1610-252
 LOT 21, 22 - OR 1610-254
 LOT 24 - FORMERLY 240 WITH
 11' TRAIL OFFICE

NOTE
 ALL OF SEC IN COUNTY



PALM BEACH COUNTY
 GARY R. NIKOLITS
 PROPERTY APPRAISER

TRP	TWP	SEC	RANGE	SECTION
42	11	11	200	11
42	11	12	200	12
42	11	13	200	13
42	11	14	200	14
42	11	15	200	15
42	11	16	200	16
42	11	17	200	17
42	11	18	200	18
42	11	19	200	19
42	11	20	200	20

Palm Beach County (County) makes no representation or warranties whatsoever on the attached / enclosed information reflected herein pertaining to easements, rights-of-way, setback lines, reservations, agreements, and other similar matters. The information provided herein should not be relied upon by the requesting party to confirm the existence / non-existence of facts contained herein.

DILLMAN HEIGHTS: COUNTY WATER SUPPLY SYSTEM CONNECTED TO DILLMAN HEIGHTS WATER DISTRIBUTION SYSTEM - RES. 76-1086 (11-23-76) BILL OF SALE OR 2615-572

AGREEMENT BOUN. SUMMIT ASS. & POC FOR WATER & SEWER P. 4661-839