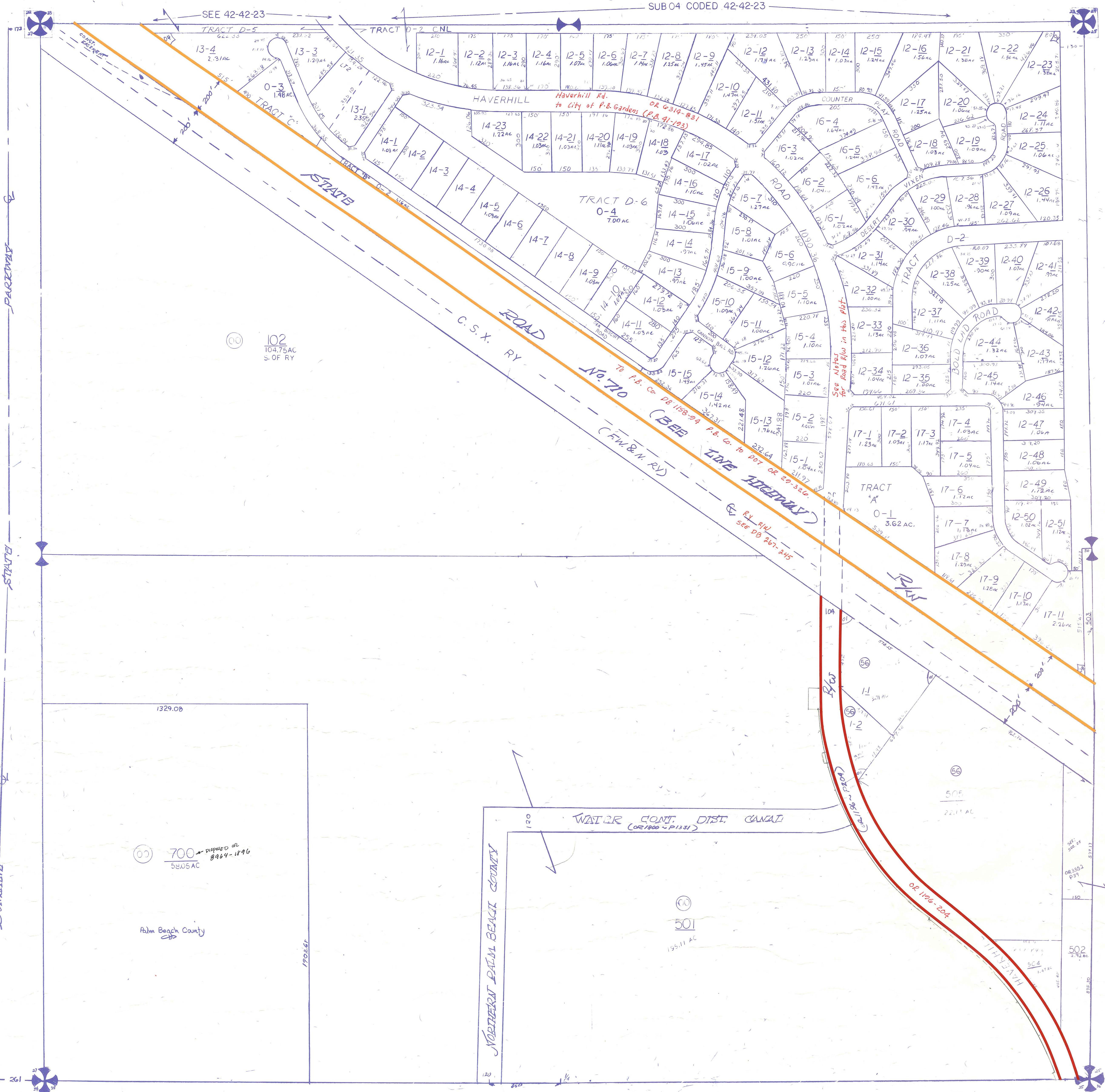




SUB 04 CODED 42-42-23

SEE 42-42-23



Notes:

All road R/W's within P.B. 41-103 Disposed to city of P.B. Gardens by OR 6319-831.

Palm Beach County (County) makes no representation or warranties whatsoever on the attached / enclosed information reflected herein pertaining to easements, rights-of-way, setback lines, reservations, agreements, and other similar matters. The information provided herein should not be relied upon by the requesting party to confirm the existence / non-existence of facts contained herein.

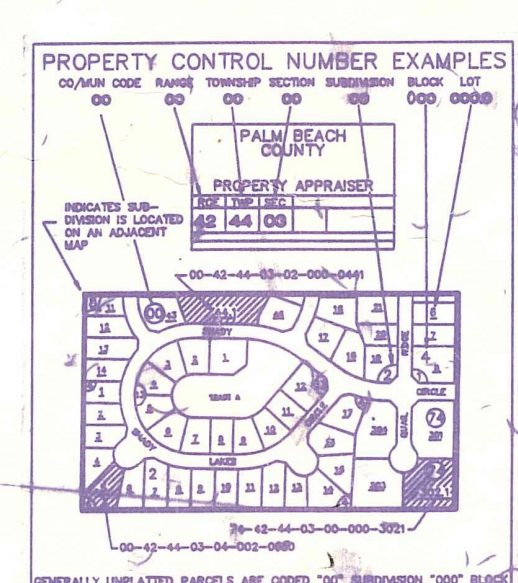
102 104.75 AC S. OF RY

700 58.5 AC

Palm Beach County

SE OF ROBINTECH INC PLANT SITE PB31PI3-197

NOTE:
PT OF SEC IN 00
PT OF SEC IN 32
PT OF SEC IN 56



NOTE:
NOT TO BE REPRODUCED IN ANY FORM EXCEPT BY EXPRESS WRITTEN CONSENT FROM THE PALM BEACH COUNTY ASSESSOR.
Information shown hereon is compiled from the best available sources and CANNOT be used for surveys or land transfers of any type.

PALM BEACH COUNTY
N-14

PROPERTY APPRAISER

36	31	32	33	34	35	36	31	RGE	TWP	SEC	AERIAL
1	6	5	4	3	2	1	6	42	42	26	NO 1055
12	7	8	9	10	11	12	7	SCALE	1" = 200'		
24	18	20	21	22	23	24	18	DRAWN BY	Jon Burke		
30	30	30	30	30	30	30	30	UPDATED	CNS 3/26/11		