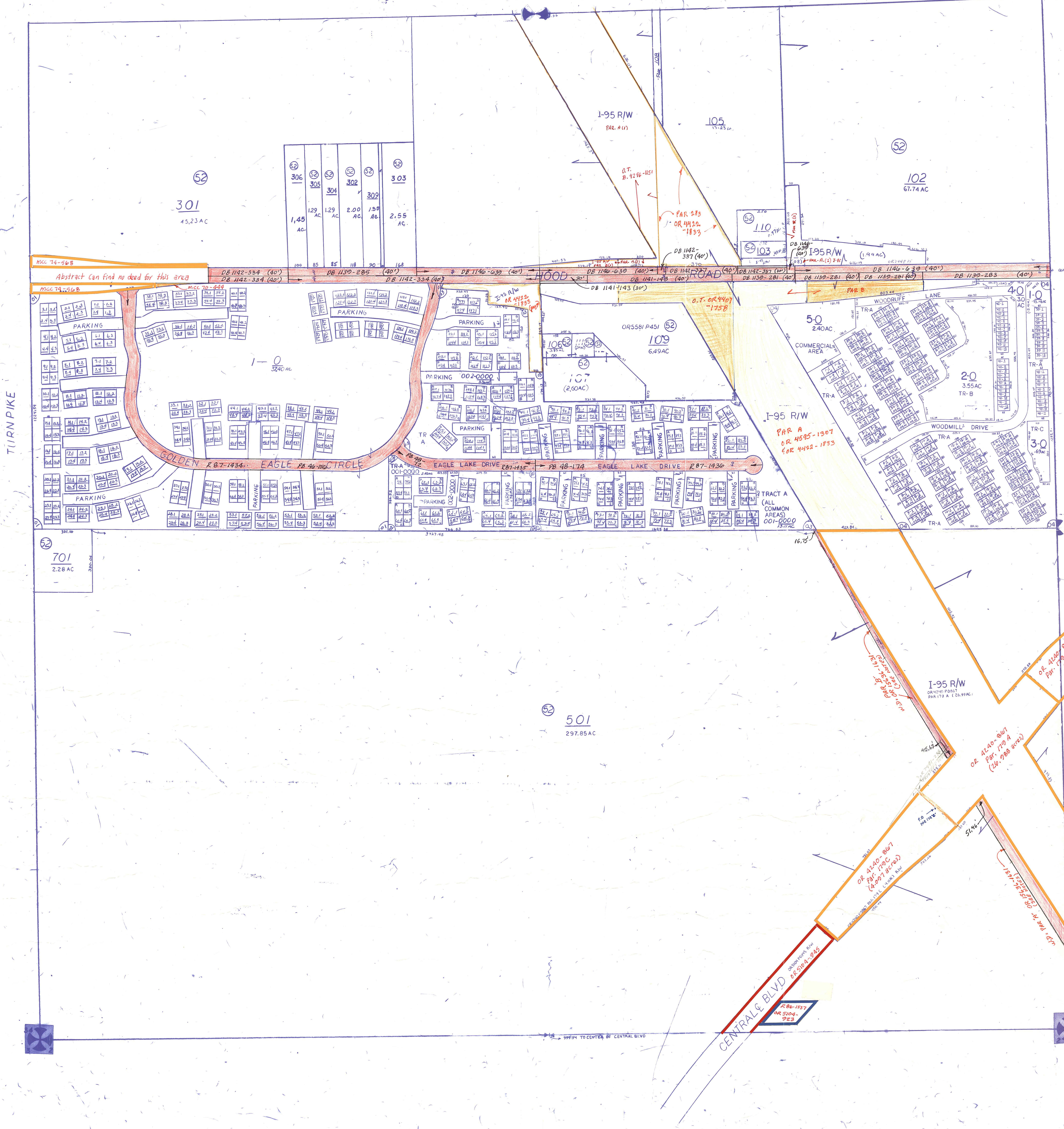


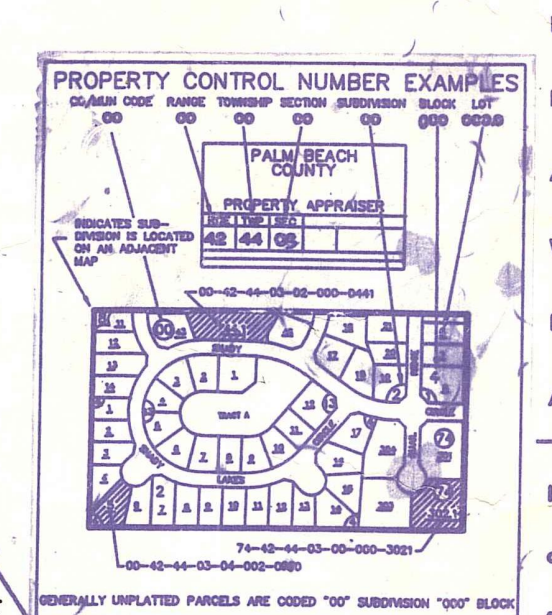
Palm Beach County (County) makes no representation or warranties whatsoever on the attached / enclosed information reflected herein pertaining to easements, rights-of-way, setback lines, reservations, agreements, and other similar matters. The information provided herein should not be relied upon by the requesting party to confirm the existence / non-existence of facts contained herein.



- NW 01 WESTWOOD GARDENS PL 1/PB 46 P156
- NW 02 WESTWOOD GARDENS PL 2 (89) PB48P72
- 03 WESTWOOD GARDENS PL 3 (85) PB48 P174
- NE 04 WESTWOOD LAKES PL4 WESTWOOD GARDENS (87) PB54P135

NOTES: I-95 & CENTRAL BLVD
 PAR A'S PARCEL "B" AS PER OR 15436-1635; SEE ALSO "PARTIAL RELEASE OF EASEMENT IN PORTION OF EASEMENT WHICH LIES WITHIN PAR A'S "B"; SEE OR 15557-1297 FOR THIS RELEASE.

PT. SEC IN COUNTY (00)
 PT SEC IN PB GRDS. (62)



NOTE:
 NOT TO BE REPRODUCED IN ANY FORM EXCEPT BY EXPRESS WRITTEN CONSENT FROM THE PALM BEACH COUNTY ASSESSOR.
 Information shown hereon is compiled from the best available sources and CANNOT be used for surveys of land transfers of any type.

PALM BEACH COUNTY
 N-9

PROPERTY APPRAISER

30	31	32	33	34	35	36	37	RGE	TWP	SEC	AERIAL
1	0	5	4	3	2	1	8	42	41	35	NO 1060
12	7	8	9	10	11	12	7	SCALE	1"=200'		
10	10	17	16	15	14	13	10	DRAWN BY	Lambert		
24	19	20	21	22	23	24	19	UPDATED	4-23-92 C.Ranich		
20	30	08	08	08	07	06	20				
36	31	32	33	34	35	36	31				
1	0	5	4	3	2	1	8				

TURNPIKE