

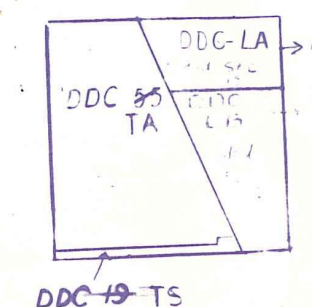
NOTE:  
 N.P.B. HGTS NO. 1 AM45 CODED  
 SEC 15 SUB 01  
 LOT 78 1/2 BLK 70  
 OMITTED BY SURVEYOR (UNREC)

**Palm Beach County (County) makes no representation or warranties whatsoever on the attached / enclosed information reflected herein pertaining to easements, rights-of-way, setback lines, reservations, agreements, and other similar matters. The information provided herein should not be relied upon by the requesting party to confirm the existence / non-existence of facts contained herein.**

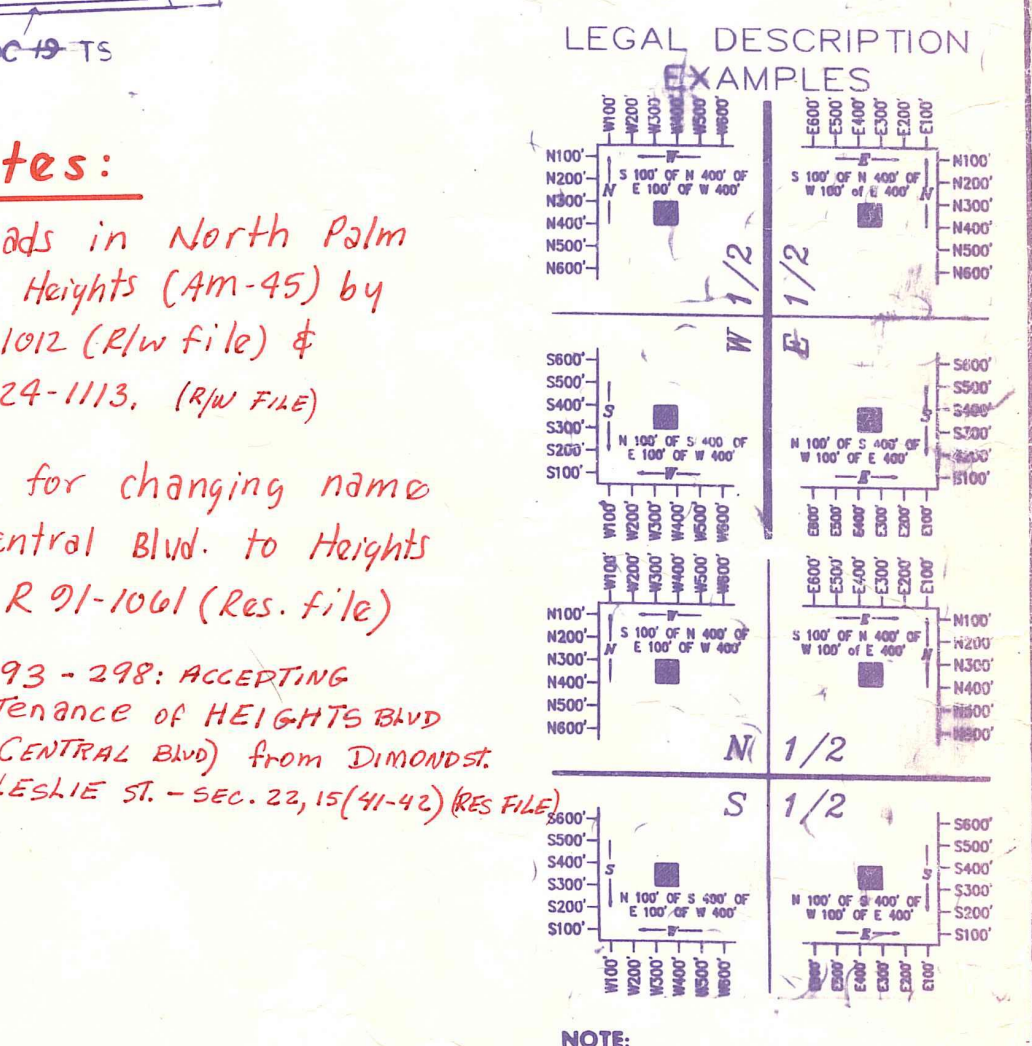
- SE 01 N.P.B. HGTS SEC 1A P.B. 26 PG.31
- SE 02 N.P.B. HGTS SEC 2A P.B. 27 PG.48 & 49
- NE 03 N.P.B. HGTS SEC 2B P.B. 27 PG.216 & 217

ALL OF SECTION IN COUNTY

NOTE:  
 MULTIPLE DDC'S IN SEC.



- Notes:**
- All roads in North Palm Beach Heights (Am-45) by R 92-1012 (R/W file) & OR 7424-1113, (R/W file)
  - Reso. for changing name of Central Blvd. to Heights Blvd. R 91-1061 (Res. file)
  - RES. 93 - 298: ACCEPTING MAINTENANCE OF HEIGHTS BLVD (OLD CENTRAL BLVD) FROM DIMONDST. TO LESLIE ST. - Sec. 23, 15(41-42) RES FILE



NOTE:  
 NOT TO BE REPRODUCED IN ANY FORM EXCEPT BY EXPRESS WRITTEN CONSENT FROM THE PALM BEACH COUNTY PROPERTY APPRAISER  
 Information shown herein is compiled from the best available sources and CANNOT be used for surveys or land transfers of any type.

**Palm Beach County (County) makes no representation or warranties whatsoever on the attached / enclosed information reflected herein pertaining to easements, rights-of-way, setback lines, reservations, agreements, and other similar matters. The information provided herein should not be relied upon by the requesting party to confirm the existence / non-existence of facts contained herein.**

**PALM BEACH COUNTY**  
 N-9  
 PROPERTY APPRAISER

36	31	32	33	34	35	36	31	R1E	T1P	SEC	AERIAL	
12	7	8	9	10	11	12	7	42	41	22	N063-15	
13	18	17	16	15	14	13	18	SCALE	1" = 200'			
24	14	13	12	11	10	9	14	DRAWN BY	M ADAMS 6-4-78			
25	30	29	28	27	26	25	30	UPDATED				
30	31	32	33	34	35	36	31					

PALM BEACH COUNTY ESTATES SECTION "Z"