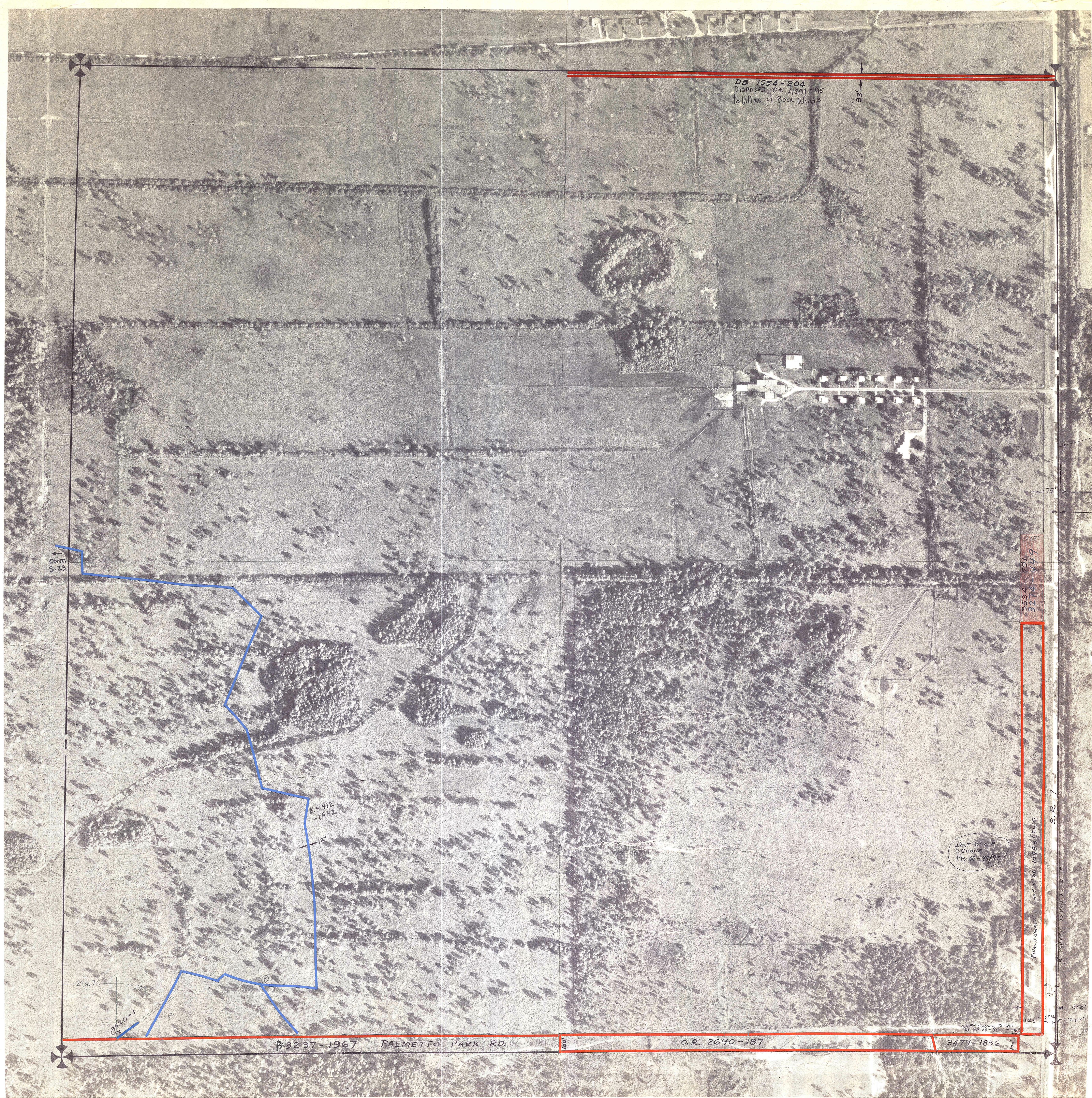


Palm Beach County (County) makes no representation or warranties whatsoever on the attached / enclosed information reflected herein pertaining to easements, rights-of-way, setback lines, reservations, agreements, and other similar matters. The information provided herein should not be relied upon by the requesting party to confirm the existence / non-existence of facts contained herein.



Range line & Sec. line
 Base line
 75
 10.79
 Ely Center line
 11148.61
 327.44
 1079-97.97
 11148.61
 327.44
 1079-97.97

NOTE:
 NOT TO BE REPRODUCED IN ANY FORM EXCEPT BY EXPRESS WRITTEN CONSENT FROM THE PALM BEACH COUNTY ASSESSOR.
 Information shown hereon is compiled from the best available sources and CANNOT be used for surveys or other transactions of any type.

PALM BEACH COUNTY
555
DAVID L. REID
 County Assessor

RGE	TWP	SEC	AERIAL
41	47	24	No. 132-D

BROCKWAY, OWEN & ANDERSON ENGINEERS, INC.
 ENGINEERS, PLANNERS, SURVEYORS
 PALM BEACH, FLORIDA



Aerial Photo Date — 10-23-70