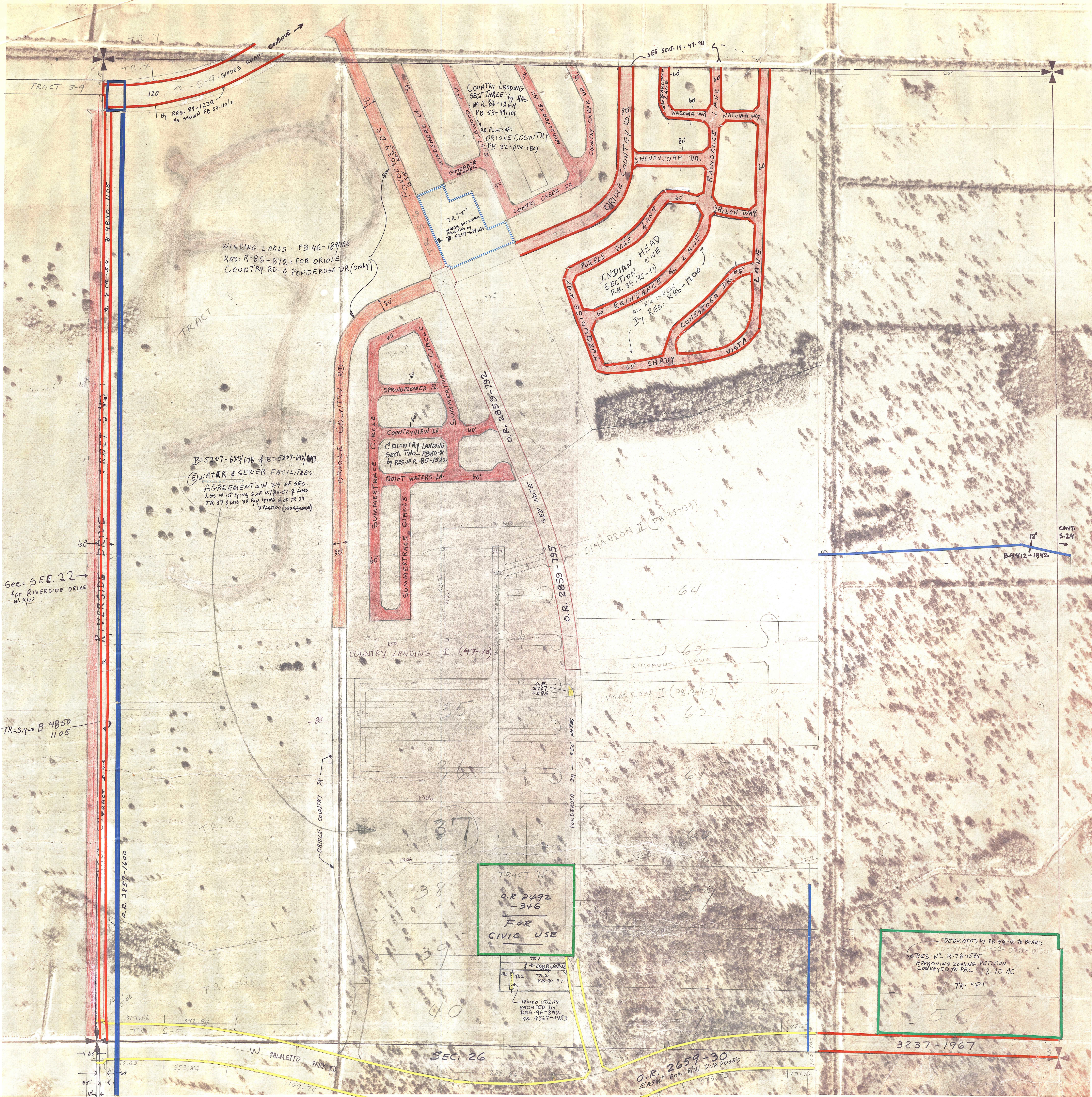


Palm Beach County (County) makes no representation or warranties whatsoever on the attached / enclosed information reflected herein pertaining to easements, rights-of-way, setback lines, reservations, agreements, and other similar matters. The information provided herein should not be relied upon by the requesting party to confirm the existence / non-existence of facts contained herein.

NOTE
 PONDEROSA DR. LYING NORTH OF PALMETTO PARK RD. IS KNOWN AS NORTH PONDEROSA DR. AS PER R. 97-1128

NOTE
 NOT TO BE REPRODUCED IN ANY FORM EXCEPT BY EXPRESS WRITTEN CONSENT FROM THE PALM BEACH COUNTY TAX ASSESSOR.
 Information shown herein is compiled from the best available sources and CANNOT be used for surveys or land transfers of any type.

PALM BEACH COUNTY		
S.55		
SEC.	TWP.	RGE.
23	47	41
1" = 200'		

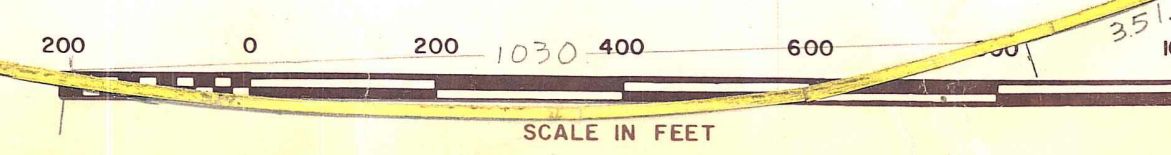


DEDICATED BY PD 78-16 TO BOARD
 RES. N. R. 78-1525
 APPROVING ZONING PETITION
 CONVEYED TO P.B.C. T2, TO AC
 TR: "P"

TRACT N
 O.R. 2492-346
 FOR
 CIVIC USE

O.R. 2659-30
 EASMT FOR PDU PURPOSES

Aerial Photo Date - DEC. 31. 1968



PHOTOGRAMMETRIC ENGINEERING BY
MOCK ROOSE & SEARCY
 Consulting Engineers