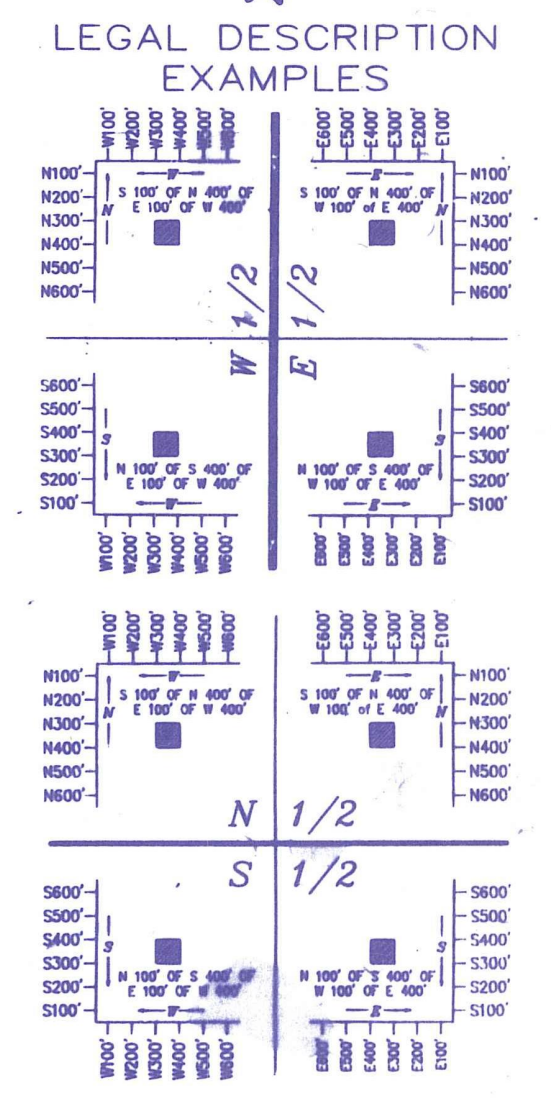


50' CNL R/W										
N 11	N 10	N 9	N 8	N 7	N 6	N 5	N 4	N 3	N 2	N 1
127 1.79 AC	221	130 1.34 AC	105 1.34 AC	140 1.70 AC	101 1.70 AC	139 1.39 AC	104 1.70 AC	110 1.34 AC	178 1.69 AC	188 1.69 AC
R 87-1076 (Rev. File) 169th 60' CT NORTH OR 5742 P947 (MISC. AC)										
N 12	N 13	N 14	N 15	N 16	N 17	N 18	N 19	N 20	N 21	N 22
141 1.74 AC	142 1.34 AC	143 1.34 AC	107 1.70 AC	144 1.70 AC	145 1.70 AC	222 1.66 AC	146 1.70 AC	147 1.70 AC	166 1.16 AC	172 1.70 AC
N 33	N 32	N 31	N 30	N 29	N 28	N 27	N 26	N 25	N 24	N 23
115 1.70 AC	131 1.70 AC	171 1.70 AC	207 1.70 AC	200 1.70 AC	170 1.70 AC	173 1.70 AC	189 1.70 AC	148 1.70 AC	114 1.70 AC	208 1.70 AC
N 34	N 35	N 36	N 37	N 38	N 39	N 40	N 41	N 42	N 43	N 44
149 1.69 AC	176 1.70 AC	132 1.70 AC	150 1.70 AC	201 1.70 AC	133 1.70 AC	174 1.70 AC	125 1.70 AC	120 1.70 AC	167 1.70 AC	151 1.70 AC
N 55	N 54	N 53	N 52	N 51	N 50	N 49	N 48	N 47	N 46	N 45
175 1.70 AC	209 1.70 AC	121 1.70 AC	210 1.70 AC	202 1.70 AC	137 1.70 AC	136 1.70 AC	135 1.70 AC	134 1.70 AC	124 1.70 AC	152 1.70 AC
N 56	N 57	N 58	N 59	N 60	N 61	N 62	N 63	N 64	N 65	N 66
102 1.70 AC	153 1.70 AC	154 1.70 AC	177 1.70 AC	106 1.70 AC	138 1.70 AC	211 1.70 AC	168 1.70 AC	155 1.70 AC	204 1.70 AC	128 1.70 AC
N 77	N 76	N 75	N 74	N 73	N 72	N 71	N 70	N 69	N 68	N 67
113 1.70 AC	126 1.70 AC	197 1.70 AC	212 1.70 AC	158 1.70 AC	157 1.70 AC	196 1.70 AC	129 1.70 AC	213 1.70 AC	195 1.70 AC	156 1.70 AC
N 78	N 79	N 80	N 81	N 82	N 83	N 84	N 85	N 86	N 87	N 88
198 1.70 AC	203 1.70 AC	111 1.70 AC	159 1.70 AC	182 1.70 AC	109 1.70 AC	199 1.70 AC	206 1.70 AC	160 1.70 AC	161 1.70 AC	123 1.70 AC
N 99	N 98	N 97	N 96	N 95	N 94	N 93	N 92	N 91	N 90	N 89
183 1.70 AC	223 1.70 AC	191 1.70 AC	190 1.70 AC	214 1.70 AC	215 1.70 AC	216 1.70 AC	162 1.70 AC	169 1.70 AC	116 1.70 AC	112 1.70 AC
N 100	N 101	N 102	N 103	N 104	N 105	N 106	N 107	N 108	N 109	N 110
184 1.70 AC	117 1.70 AC	185 1.70 AC	205 1.70 AC	118 1.70 AC	217 1.70 AC	119 1.70 AC	218 1.70 AC	163 1.70 AC	164 1.70 AC	122 1.70 AC
N 121	N 120	N 119	N 118	N 117	N 116	N 115	N 114	N 113	N 112	N 111
103 1.70 AC	194 1.70 AC	165 1.70 AC	219 1.70 AC	108 1.70 AC	220 1.70 AC	186 1.70 AC	193 1.70 AC	181 1.70 AC	187 1.70 AC	192 1.70 AC
50' CNL R/W										
N 122	N 123	N 124	N 125	N 126	N 127	N 128	N 129	N 130	N 131	N 132
504 1.79 AC	570	625	526	626	540	524	530	508	543	600
N 143	N 142	N 141	N 140	N 139	N 138	N 137	N 136	N 135	N 134	N 133
532	607	547	525	506	546	545	531	560	544	571
N 144	N 145	N 146	N 147	N 148	N 149	N 150	N 151	N 152	N 153	N 154
533	527	521	528	515	541	507	601	548	599	534
N 165	N 164	N 163	N 162	N 161	N 160	N 159	N 158	N 157	N 156	N 155
542	535	624	516	614	561	610	522	549	602	517
N 166	N 167	N 168	N 169	N 170	N 171	N 172	N 173	N 174	N 175	N 176
503	613	550	612	518	608	536	603	510	537	598
N 187	N 186	N 185	N 184	N 183	N 182	N 181	N 180	N 179	N 178	N 177
538	569	554	553	552	529	551	615	604	523	562
N 188	N 189	N 190	N 191	N 192	N 193	N 194	N 195	N 196	N 197	N 198
622	511	581	555	605	556	623	514	501	509	580
N 209	N 208	N 207	N 206	N 205	N 204	N 203	N 202	N 201	N 200	N 199
611	572	568	558	586	585	512	557	609	621	606
N 210	N 211	N 212	N 213	N 214	N 215	N 216	N 217	N 218	N 219	N 220
501	502	587	582	588	620	513	559	520	589	567
N 231	N 230	N 229	N 228	N 227	N 226	N 225	N 224	N 223	N 222	N 221
591	617	565	564	505	584	590	618	583	563	619
N 232	N 233	N 234	N 235	N 236	N 237	N 238	N 239	N 240	N 241	N 242
595	627	539	616	566	592	519	593	596	597	594



NOTE: ALL ROAD EASEMENTS 60' OR AS NOTED

LIMITED SECTION DATA

NOTE: E/P OF SEC DOC 54 TD AC PER DEEDS

ALL OF SECTION IN COUNTY - 00

Palm Beach County (County) makes no representation or warranties whatsoever on the attached / enclosed information reflected herein pertaining to easements, rights-of-way, setback lines, reservations, agreements, and other similar matters. The information provided herein should not be relied upon by the requesting party to confirm the existence / non-existence of facts contained herein.

NOTE: NOT TO BE REPRODUCED IN ANY FORM EXCEPT BY EXPRESS WRITTEN CONSENT FROM THE PALM BEACH COUNTY PROPERTY APPRAISER

Information shown hereon is compiled from the best available sources and CANNOT be used for surveys or land transfers of any type.

36	31	32	33	34	35	36	31
12	7	8	9	10	11	12	7
13	18	17	16	15	14	13	18
24	19	20	21	22	23	24	19
25	30	29	28	27	26	25	30
36	31	32	33	34	35	36	31

66' RD R/W Continuation of Road to Sec. 10-41-41 to be determined by County Surveyor as to direction & location

PALM BEACH COUNTY
Misc.
PROPERTY APPRAISER

RGE	TWP	SEC	AERIAL
41	41	9	NO 56-10
SCALE	1" = 200'		
DRAWN BY	McADAMS 4/75		
UPDATED	6/92		