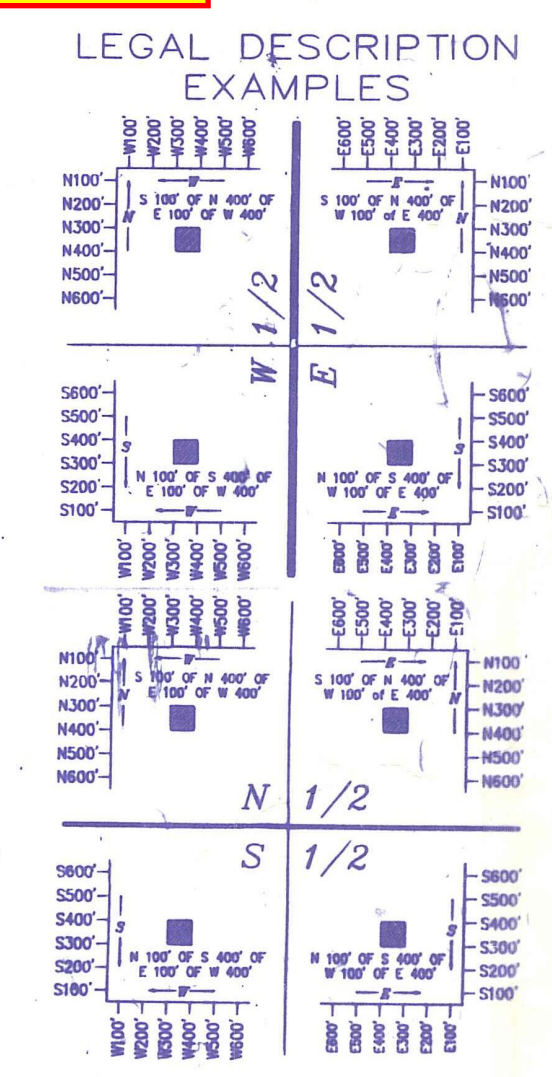


**Palm Beach County (County)**  
 makes no representation or  
 warranties whatsoever on the  
 attached / enclosed  
 information reflected herein  
 pertaining to easements,  
 rights-of-way, setback lines,  
 reservations, agreements, and  
 other similar matters. The  
 information provided herein  
 should not be relied upon by  
 the requesting party to confirm  
 the existence / non-existence  
 of facts contained herein.



NOTE:  
 FT OF SEC CODED IN DD 18 &  
 FT OF SEC CODED IN DD 54

NOTE:  
 ALL OF SECTION IN COUNTY - 00  
 LIMITED SECTION DATA  
 DRAWN BY AERIAL PHOTO & SOLKOFF  
 ENGINEERS DRAWING

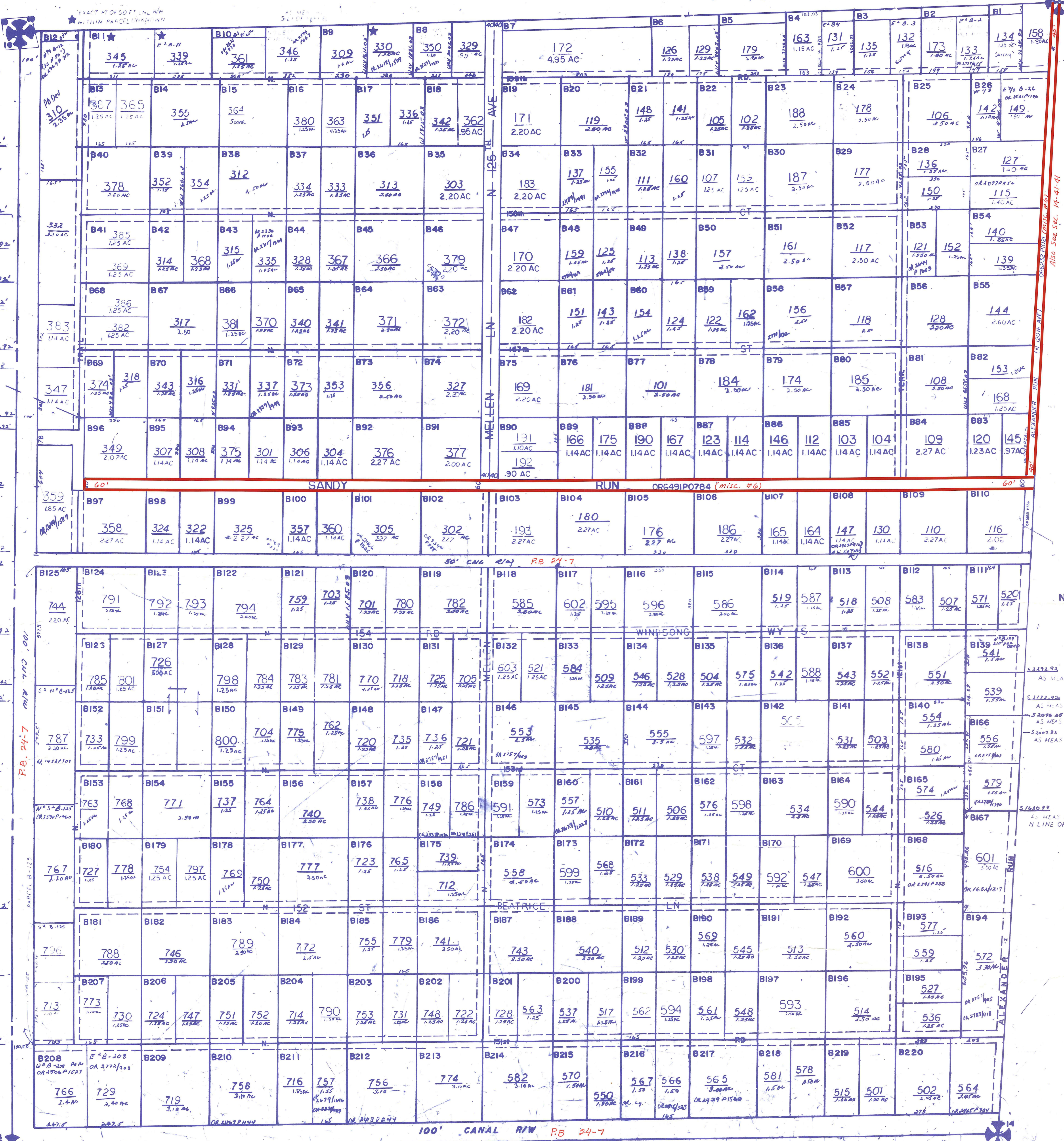
NOTE: PARCELS B-166  
 167  
 164  
 IN QUESTION MAKING  
 RELATED PARENT CARDS  
 SUBJECT TO CHANGE

NOTE:  
 NOT TO BE REPRODUCED IN  
 ANY FORM EXCEPT BY EXPRESS  
 WRITTEN CONSENT FROM THE  
 PALM BEACH COUNTY  
 PROPERTY APPRAISER  
 Information shown hereon is  
 compiled from the best available  
 sources and CANNOT be used  
 for surveys or land transfers of  
 any type.

**PALM BEACH COUNTY**  
 Misc.  
 PROPERTY APPRAISER

RGE	TWP	SEC	AERIAL
41	41	15	NOB7118

SCALE: 1" = 200'  
 DRAWN BY: MC ADAMS  
 UPDATED: 10-22-15



PALM BEACH COUNTY ESTATES SECTION "B"

MANUAL SURVEY IN 1884 BY  
 S. C. RAY & COMPANY  
 FOR O. W. BENTLEY

WAS SEC-LINE  
 FOOTAGE AS GUIDE  
 FROM DEEDS - WILL  
 NOT SCALE ACCURATELY  
 PER MAPS FURNISHED  
 US.