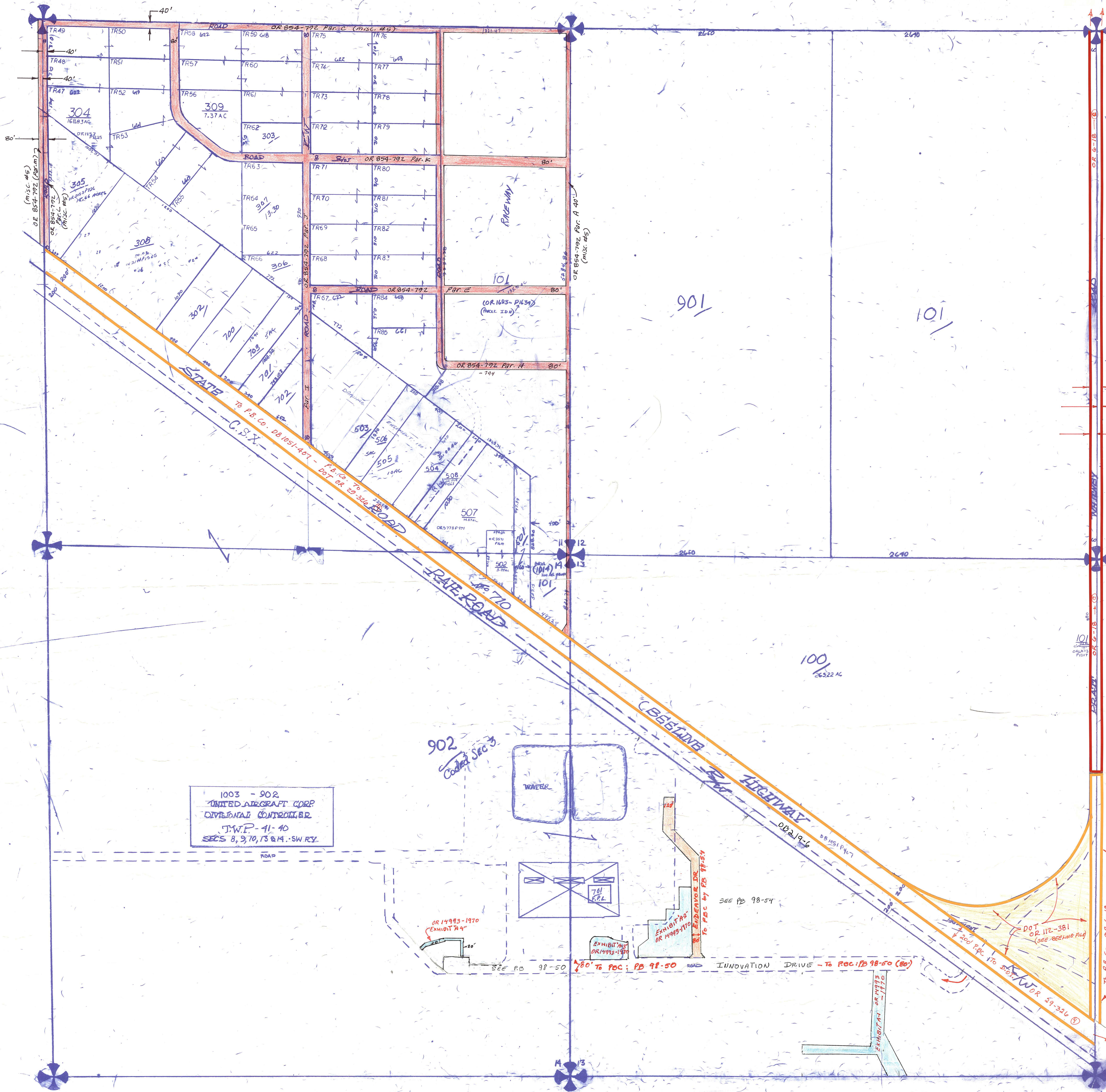
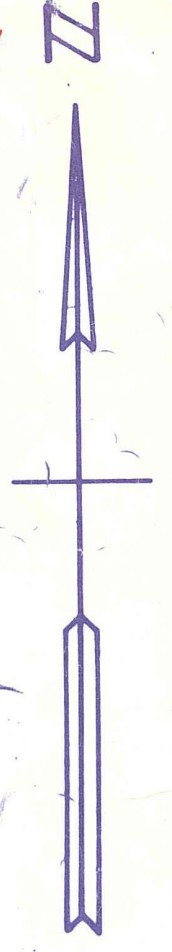


SECT. 1-41-40

SECT. 6-41-41



1003 - 902  
UNITED AIRCRAFT CORP  
DIVISIONAL CONTROLER  
T.W.P. - 41-40  
SECS 8, 9, 10, 13 & 14 - SW. QY.

Palm Beach County (County) makes no representation or warranties whatsoever on the attached / enclosed information reflected herein pertaining to easements, rights-of-way, setback lines, reservations, agreements, and other similar matters. The information provided herein should not be relied upon by the requesting party to confirm the existence / non-existence of facts contained herein.

NOTE  
NOT TO BE REPRODUCED IN  
ANY FORM EXCEPT BY EXPRESS

11-41-40  
To  
15-41-41

PROPERTY APPRAISER			
RGE	TWP	SEC	APRAL
40	41	14	NO 497
SCALE - 1" = 40'			
DRAWN BY - J. B. ...			

31	32	33	34	35	36
1	2	3	4	5	6
7	8	9	10	11	12
13	14	15	16	17	18
19	20	21	22	23	24
25	26	27	28	29	30
31	32	33	34	35	36
37	38	39	40	41	42