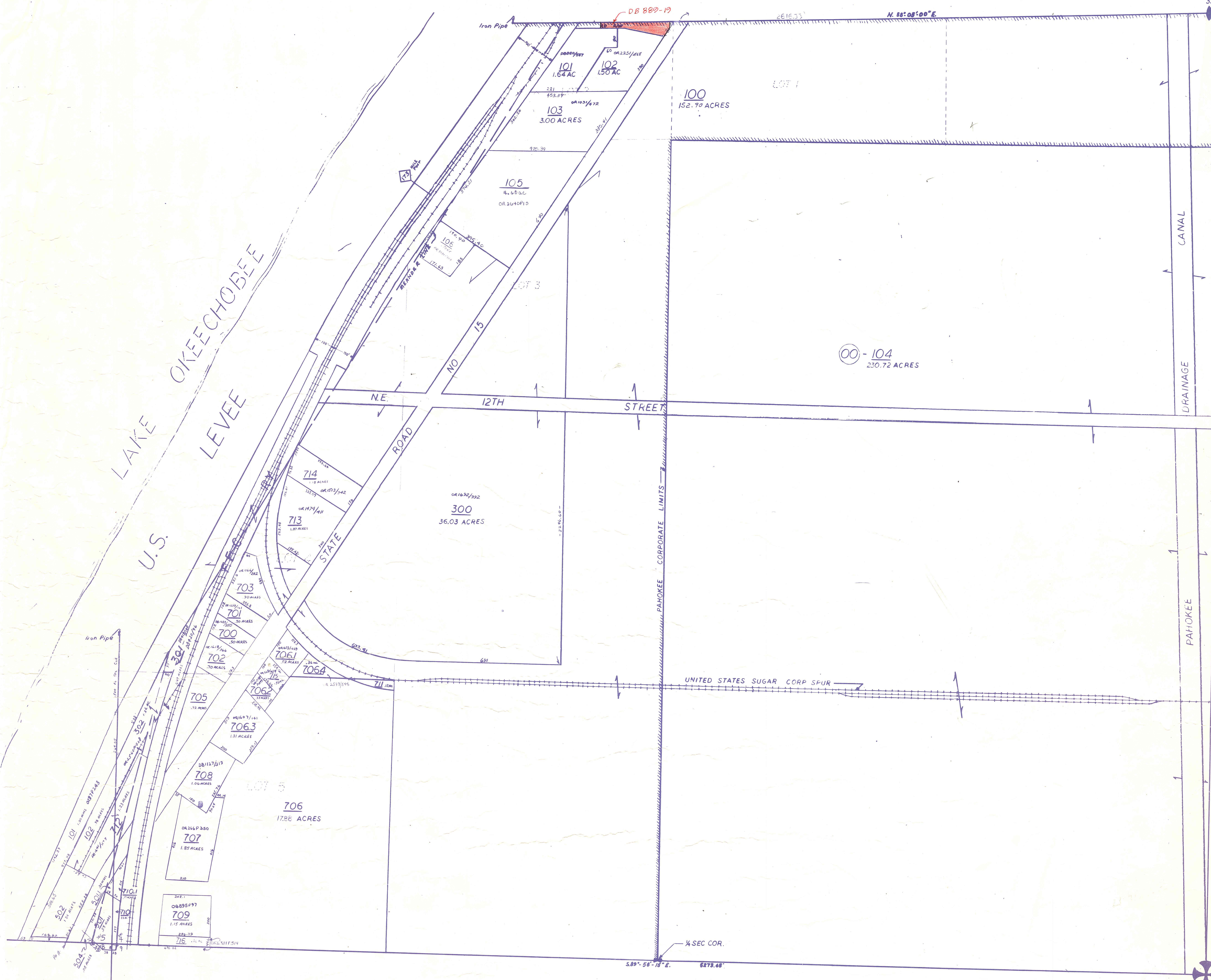
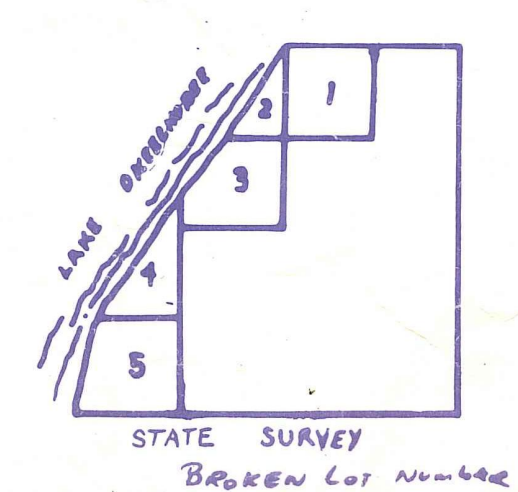


Palm Beach County (County) makes no representation or warranties whatsoever on the attached / enclosed information reflected herein pertaining to easements, rights-of-way, setback lines, reservations, agreements, and other similar matters. The information provided herein should not be relied upon by the requesting party to confirm the existence / non-existence of facts contained herein.



ALL OF SECTIONS 4+5 ARE IN PAHOKEE (46) EXCEPT E 1/2 LYING SOUTH OF LOTS 112

25-42-36  
to  
15-42-41



PALM BEACH COUNTY  
Misc. COUNTY  
REBECCA E. WALKER  
PROPERTY APPRAISER

RGE	TWP	SEC	AREAL
37	42	415	NO 340

SCALE: 1" = 200'  
DRAWN BY: [Signature]  
CHECKED BY: [Signature]

STATE SURVEY GLADES TWP PLATS