

NOTE
F.T.S. ON MAP FROM
ALL 01 FLA STATE DRAINAGE LAND CO SUB PB7P464PB6P15

- NW 02 CROSBY SUB SOUTH BAY PB2IP34
- NW 03 ELFERS SUB PB25P81
- NE 04 FISHER ADD TO SOUTH BAY PB20P93
- NW 05 FISHER ADD. NO.2 TO SOUTH BAY PB22P47
- SE 06 GOODBREADS PB28P2
- NW 07 HIGGINBOTHAM SUB PB25P80
- NE 08 MASONIC PB25P96
- NW 09 ROADMAN & HARDYS PB21P67
- NW 10 ROBERTS PB25P177
- NW 11 SUMMERLINS PB20P31
- NW 12 WALKER ADD. TO SOUTH BAY PB20P2
- NW 13 WALKER ADD. NO.2 TO SOUTH BAY PB20P100
- NW 14 WALKER SUB S 1/2 TR. 26 PB25P218
- NE 15 TOWN OF SOUTH BAY(PB7P46
- NW 16 BYRDS ADD. OF SOUTH BAY PB18P61
- NE 17 MASONIC SUB REPL. PB27P83
- NW 18 STARLINGS ADD. TO SOUTH BAY PB27P89
- NE 19 ELFERS SUB NO.2 PB27P85
- NW 20 DAVIS AND WOODHAM TO SOUTH BAY PB27P137
- NE 21 GOODBREADS 2ND ADD. PB27P167
- NW 22 MASONICS SUB NO.3 PB27P222
- NE 23 MASONICS SUB NO.3 REPL. PB28P49
- NW 24 MANVERO SUB PB28P8
- NW 25 REPL. LTS. 1,14&38 CROSBYS SUB PB28P84
- NW 26 ROGERS SUB PB28P183
- NW 27 TRIPP ADD. TO SOUTH BAY (1984) PB45P77

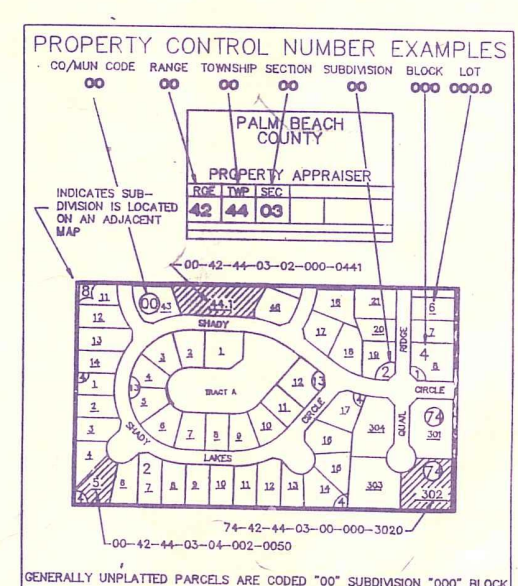
- SOUTH BAY AREA
P.B. 7-46.

Palm Beach County (County) makes no representation or warranties whatsoever on the attached / enclosed information reflected herein pertaining to easements, rights-of-way, setback lines, reservations, agreements, and other similar matters. The information provided herein should not be relied upon by the requesting party to confirm the existence / non-existence of facts contained herein.

NOTE:
ALL OF SEC 14 IS IN THE CITY LIMITS OF SOUTH BAY (1980)

NOTE:
NOT TO BE REPRODUCED IN ANY FORM EXCEPT BY EXPRESS WRITTEN CONSENT FROM THE PALM BEACH COUNTY PROPERTY APPRAISER

Information shown hereon is compiled from the best available sources and CANNOT be used for surveys or land transfers of any type.



PALM BEACH COUNTY
GARY R. NIKOLITS
PROPERTY APPRAISER

| | | | | | | | |
|----|----|----|----|----|----|----|----|
| 36 | 31 | 32 | 33 | 34 | 35 | 36 | 31 |
| 1 | 6 | 9 | 4 | 3 | 2 | 1 | 8 |
| 12 | 7 | 8 | 9 | 10 | 11 | 12 | 7 |
| 13 | 18 | 17 | 16 | 15 | 14 | 13 | 18 |
| 24 | 19 | 20 | 21 | 22 | 23 | 24 | 19 |
| 25 | 30 | 29 | 28 | 27 | 26 | 25 | 30 |
| 36 | 31 | 32 | 33 | 34 | 35 | 36 | 31 |
| 1 | 6 | 9 | 4 | 3 | 2 | 1 | 8 |

| | | | |
|----------|----------------|-----|--------|
| RGE | TWP | SEC | AERIAL |
| 36 | 44 | 14 | NO1319 |
| SCALE | 1:200 | | |
| DRAWN BY | GRICE 10-26-73 | | |
| UPDATED | | | |

QQ-22

10 11
15 14

11 12
14 13

15 14
22 23

14 13
23 24

