

01 SUB OF STATE SURV. SEC. 25

Palm Beach County (County) makes no representation or warranties whatsoever on the attached / enclosed information reflected herein pertaining to easements, rights-of-way, setback lines, reservations, agreements, and other similar matters. The information provided herein should not be relied upon by the requesting party to confirm the existence / non-existence of facts contained herein.

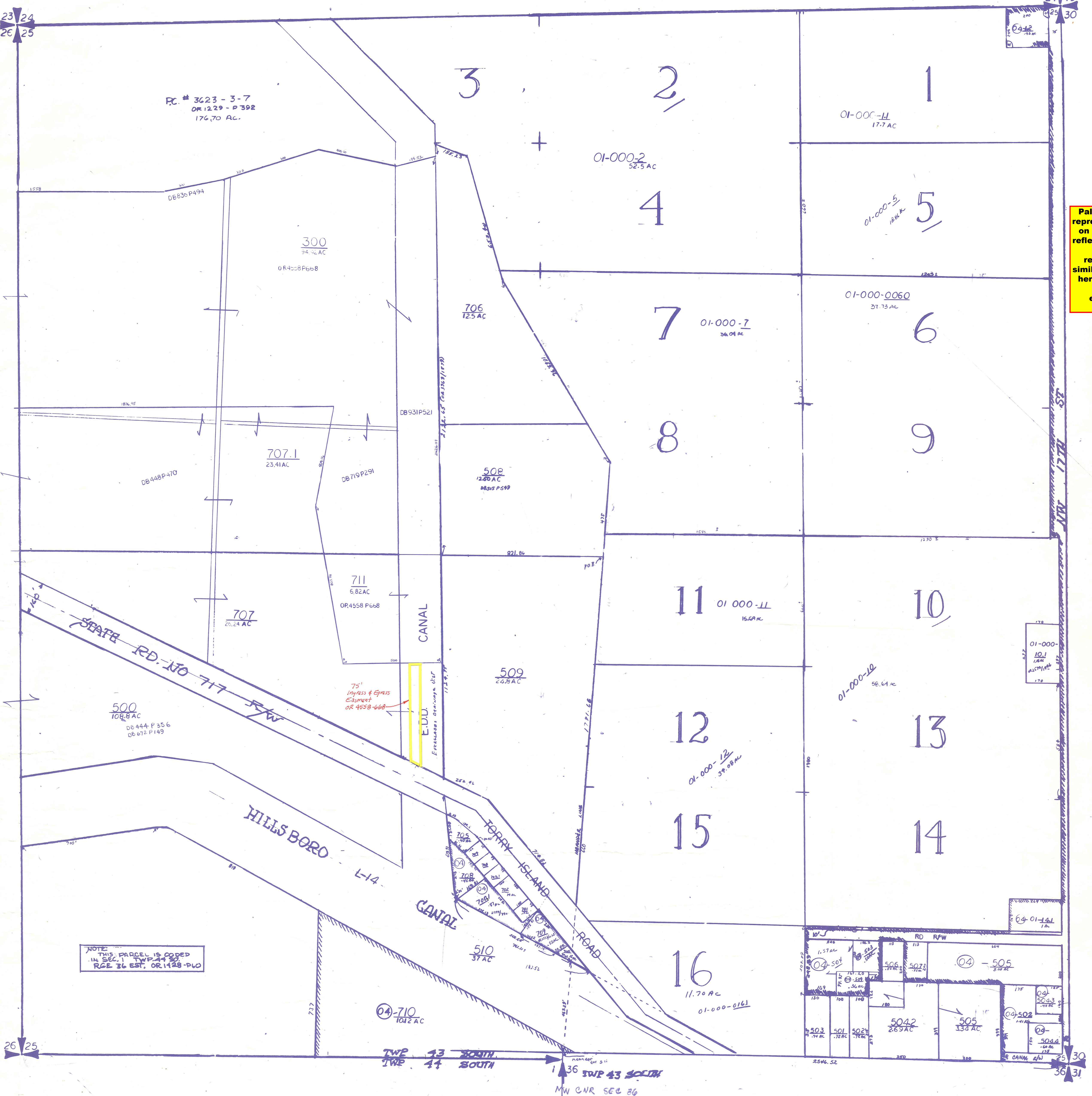
NOTE: PARCELS CODED 04 ARE IN THE CITY LIMITS OF BELLE GLADE, IND.

NOTE:
NOT TO BE REPRODUCED IN ANY FORM EXCEPT BY EXPRESS WRITTEN CONSENT FROM THE PALM BEACH COUNTY PROPERTY APPRAISER
Information shown herein is compiled from the best available sources and CANNOT be used for surveys or land transfers of any type.

PP-19

PALM BEACH COUNTY
Misc.
PROPERTY APPRAISER

RGE	TWP	SEC	AERIAL
36	43	25	NOV280
SCALE F200			
DRAWN BY GRICE 10-1-73			
UPDATED 2-2-88 MIPP			



RC. # 3623-3-7
OR 1229-P 392
176.70 AC.

300
24.4 AC
OR 4408 P 668

706
12.5 AC

707.1
23.41 AC

509
20.5 AC
OR 4515 P 599

711
6.82 AC
OR 4558 P 668

500
108.8 AC
OR 444 P 356
OR 672 P 149

509
20.5 AC

12
01-000-12
39.08 AC

13
01-000-10
1.8 AC

15
01-000-12
39.08 AC

14
01-000-10
1.8 AC

16
11.70 AC
01-000-0161

503
1.72 AC

504
1.72 AC

505
1.72 AC

506
1.72 AC

507
1.72 AC

508
1.72 AC

509
1.72 AC

510
1.72 AC

511
1.72 AC

512
1.72 AC

NOTE: THIS PARCEL IS CODED 04 IN SEC. 21 TWP. 44 S2 RGE. 36 EST. OR 1128-PL0

04-710
101.2 AC

TWP 43 SOUTH
TWP 44 SOUTH

TWP 43 SOUTH
MW CNR SEC 36

