

28 27

33

27 26

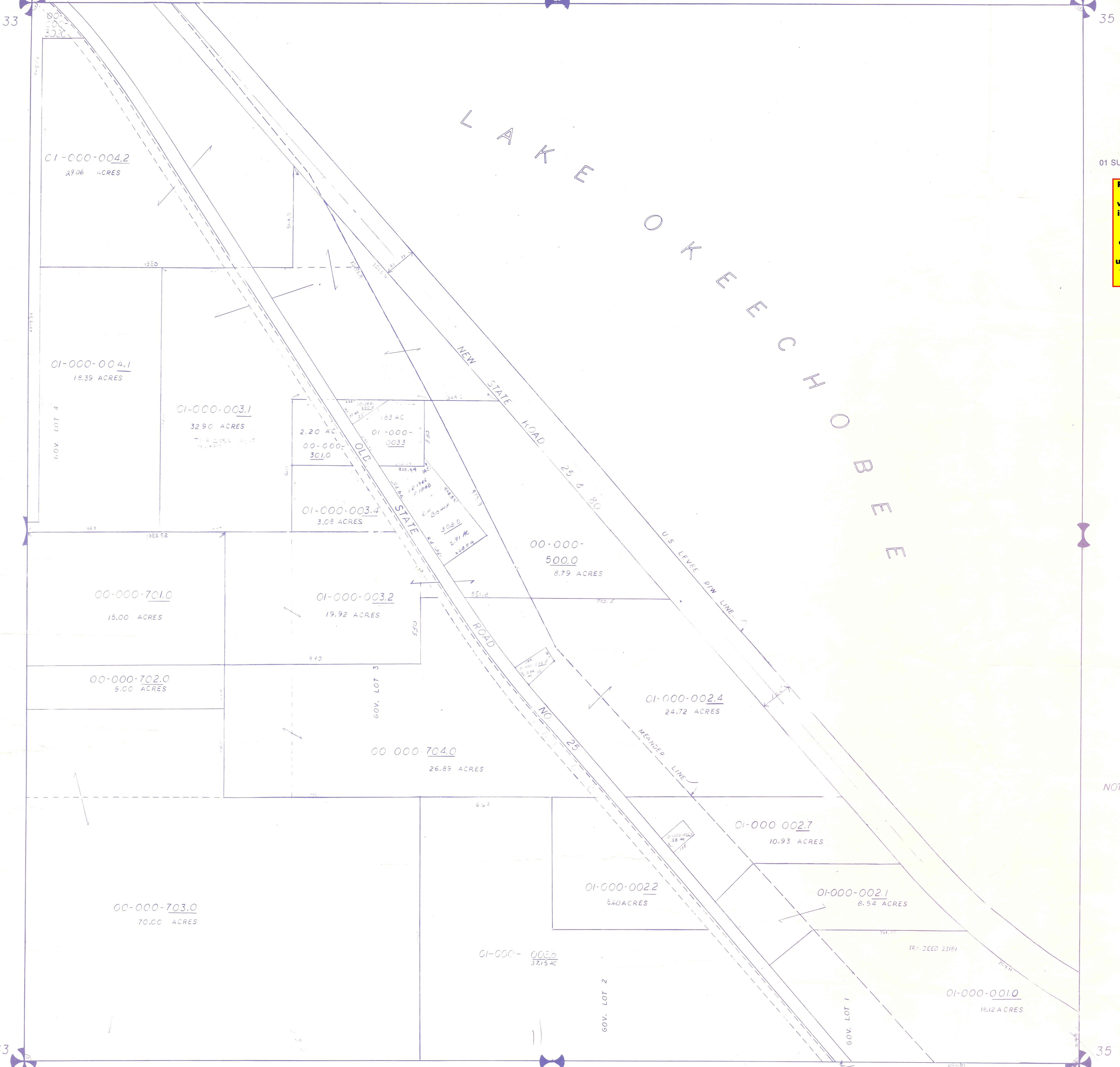
35



01 SUB DIV OF 34-43-35 FRAC SEC IN PB18 P59

**Palm Beach County (County) makes no representation or warranties whatsoever on the attached / enclosed information reflected herein pertaining to easements, rights-of-way, setback lines, reservations, agreements, and other similar matters. The information provided herein should not be relied upon by the requesting party to confirm the existence / non-existence of facts contained herein.**

L  
A  
K  
E  
  
O  
K  
E  
E  
C  
H  
O  
R  
E  
E



NOTE  
ALL OF SEC IN COUNTY

NOTE:  
NOT TO BE REPRODUCED IN ANY FORM EXCEPT BY EXPRESS WRITTEN CONSENT FROM THE PALM BEACH COUNTY ASSESSOR.  
Information shown herein is compiled from the best available sources and CANNOT be used for surveys or land transfers of any type.

XX-10

**PALM BEACH COUNTY**  
**GARY R. NIKOLITS**  
**PROPERTY APPRAISER**

RGE	TWP	SEC	AERIAL
35	43	34	NO
SCALE		1" = 20.0'	
DRAWN BY		KESHIAN	
UPDATED:			

ING 24-141-1005B