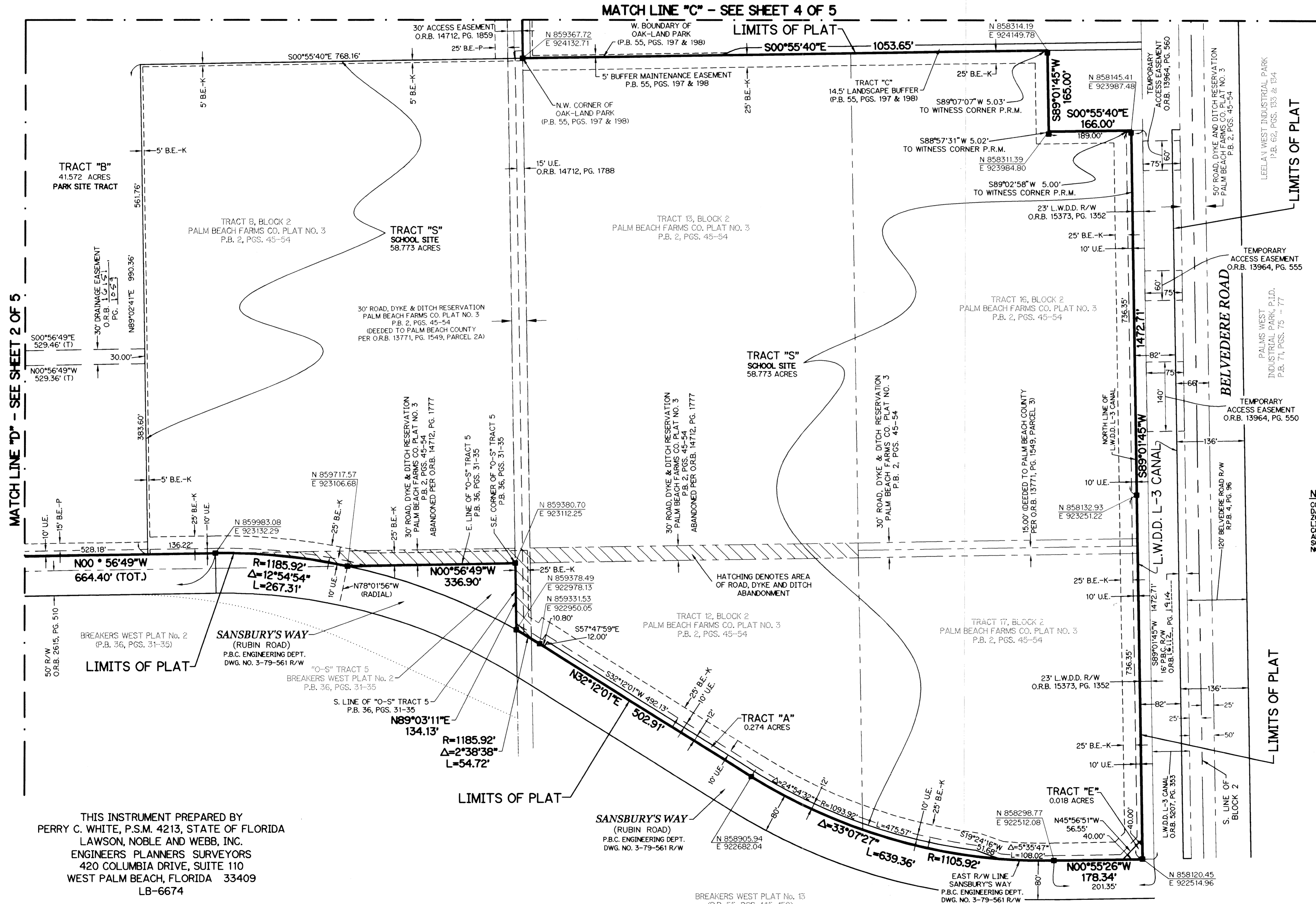
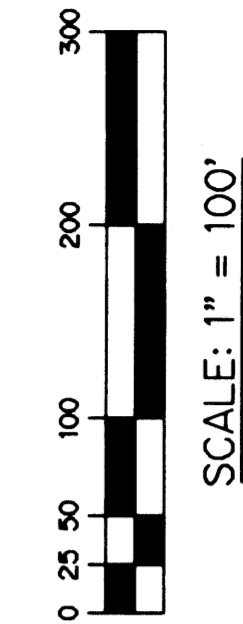


KING'S ACADEMY AND PALM BEACH COUNTY PARK SITE

A PARCEL OF LAND LYING WITHIN SECTIONS 29 AND 32, TOWNSHIP 43 SOUTH, RANGE 42 EAST, BEING A REPLAT OF PORTIONS OF TRACTS 1, 5, 6, 7, 8, 12, 13, 14, 16, AND 17, AND THE 30' PLATTED ROADS ABUTTING SAID TRACTS, IN BLOCK 2, PALM BEACH FARMS CO. PLAT NO. 3, ACCORDING TO THE PLAT THEREOF, AS RECORDED IN PLAT BOOK 2, PAGES 45 THROUGH 54 OF THE PUBLIC RECORDS, ALL LYING WITHIN SECTIONS 29 AND 32, TOWNSHIP 43 SOUTH, RANGE 42 EAST, PALM BEACH COUNTY, FLORIDA

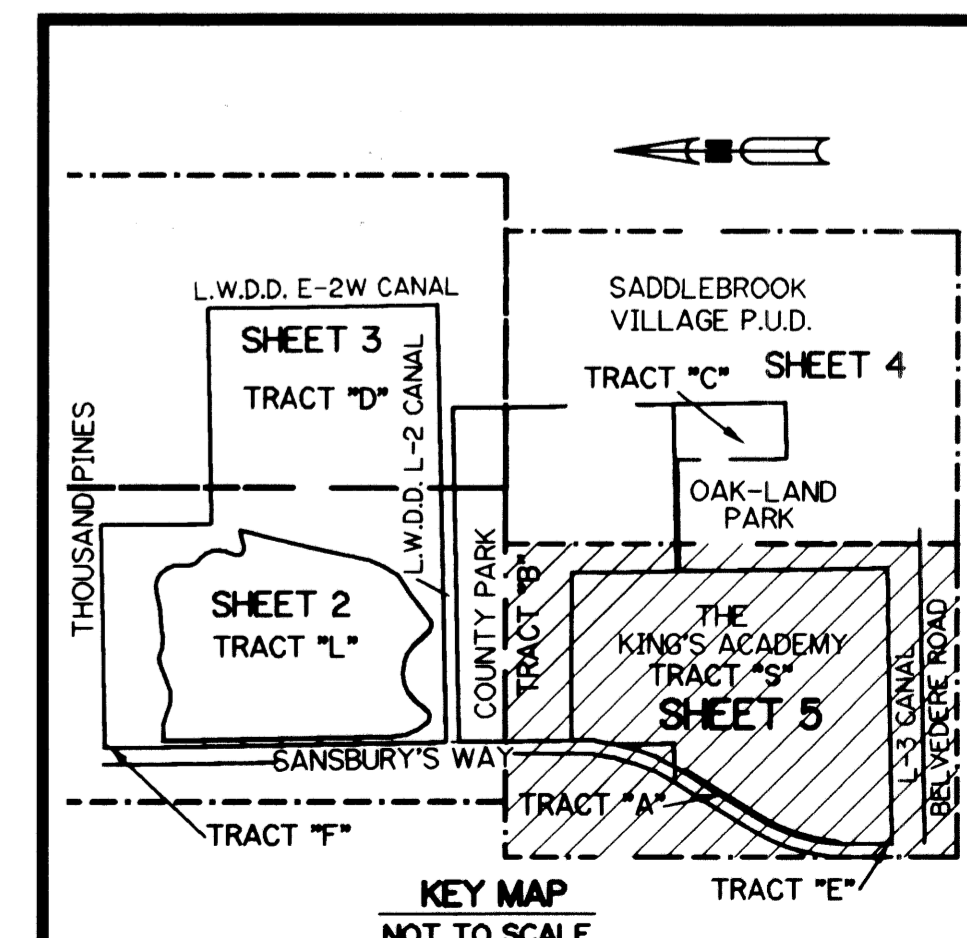
SHEET 5 OF 5 SEPTEMBER, 2003



- LEGEND:**
- - FIND CONCRETE MONUMENT
 - - SET PERMANENT REFERENCE MONUMENT, L.B. #6674
 - BE-P - PALM BEACH COUNTY BUFFER EASEMENT
 - BE-K - THE KING'S ACADEMY BUFFER EASEMENT
 - CA - CONCRETE MONUMENT
 - CL - CENTERLINE
 - DB - DEED BOOK
 - DE - DRAINAGE EASEMENT
 - LAE - LIMITED ACCESS EASEMENT
 - LME - LAKE MAINTENANCE EASEMENT
 - L.W.D.D. - LAKE WORTH DRAINAGE DISTRICT
 - N.T.S. - NOT TO SCALE
 - O.R.B. - OFFICIAL RECORD BOOK
 - R.D.&D. - ROAD, DYKE AND DITCH RESERVATION
 - ESMT - EASEMENT
 - P.B. - PLAT BOOK
 - P.S. - PAGES
 - P.S.M. - PROFESSIONAL SURVEYOR AND MAPPER
 - R/W - RIGHT-OF-WAY
 - ST - SURVEY TIE
 - (TOT.) - TOTAL
 - UE - UTILITY EASEMENT
 - P.O.B. - POINT OF BEGINNING
 - P.O.C. - POINT OF COMMENCEMENT
 - N 737648.0171 DENOTES STATE PLANE COORDINATES
 - E 905258.2326

NOTE:

COORDINATES SHOWN ARE GRID COORDINATES
 DATUM = NAD 83 (1980 ADJUSTMENT)
 ZONE = 18L (FLORIDA EAST ZONE)
 LINEAR UNIT = U.S. SURVEY FEET
 COORDINATE SYSTEM = 1983 STATE PLANE TRANSVERSE MERCATOR PROJECTION
 ALL DISTANCES ARE GROUND
 SCALE FACTOR = 1.0000236
 NO ROTATION = (GRID BEARING TO PLAT BEARING)



MATCH LINE "D" - SEE SHEET 2 OF 5

MATCH LINE "C" - SEE SHEET 4 OF 5

SUBDIVISION KING'S ACADEMY AND PALM BEACH COUNTY PARK SITE
 BOOK 100 PAGE 109
 FLOOD ZONE # FLOOD MAP # 1504
 QUAD # 46 ZONING 17F/56
 SE. 202 125T ZIP CODE 33411
 TAZ 1065 PUD NAME

THIS INSTRUMENT PREPARED BY
 PERRY C. WHITE, P.S.M. 4213, STATE OF FLORIDA
 LAWSON, NOBLE AND WEBB, INC.
 ENGINEERS PLANNERS SURVEYORS
 420 COLUMBIA DRIVE, SUITE 110
 WEST PALM BEACH, FLORIDA 33409
 LB-6674

SANSBURY'S WAY
 (RUBIN ROAD)
 P.B.C. ENGINEERING DEPT.
 DWG. NO. 3-79-561 R/W

EAST R/W LINE
 SANSBURY'S WAY
 P.B.C. ENGINEERING DEPT.
 DWG. NO. 3-79-561 R/W